

N.º 323 JULY/2023

FOLLOW ME LISBOA



SUMMER FESTIVALS



EXHIBITIONS

MUSIC

DANCE

MONUMENTS

CENTRO INTERPRETATIVO



da *história* da

BACALHAU

*An epic story that
ends at the table.*

LISBOA

Terreiro do Paço, Torreão Nascente
1100-148 | Lisboa, Portugal

historiabacalhau.pt
info@historiabacalhau.pt





30 DE JUNHO
01 DE JULHO

P. CAMPISMO INATEL - PRAIA DE S. JOÃO
COSTA DA CAPARICA

30 DE JUNHO

POPCAAN

**AYA NAKAMURA • PROFJAM
BARBARA BANDEIRA
MISHLAWI**

1 DE JULHO

**WIZ KHALIFA
MATUÊ • IANN DIOR
GUERRILLA GIRLS**

BLAYA, CARLA PRATA, CÍNTIA, EVA RAP DIVA
MULEÇA XIII, TVON E DJ ALLEXIA

**MIZZY MILES & FRIENDS
CHILDREN OF ZEUS**

**MÚSICA, SURF, SKATE
DANÇA & ARTE**



Sumol Summer Fest

1st July; Parque de Campismo Inatel; Av. Afonso de Albuquerque, São João de Caparica (bus: 3011).
Tickets: from 42 to 145 euros. More information at: sumolsummerfest.com

This year, the festival which kicks off the summer rhythms has its stage by the São João de Caparica beach. National and international music are once again the starting point to celebrate the beach, the summer and friends. Sumol Summer Fest will bring Jamaican singer Popcaan to Portugal for the first time. Brazilian rapper Matuê, the Portuguese ProfJam, Bárbara Bandeira and Mishlawi, the soul/hip-hop band from Manchester, Children of Zeus, and many others will also be performing.

FESTIVALS



Jardins do Marquês Oeiras Valley

1st, 2nd and 5th July; from 7:30 pm; Palácio Marquês de Pombal; Largo Marquês de Pombal, Oeiras (buses: 467, 468, 470, 471, 479, 489). Tickets: from 18 to 70 euros. More information at: jardinsdomarquês.pt

The festival which fills the nights of Oeiras with rhythm is back for its third edition. With two different stages and with performances alternating between them, at Jardins do Marquês Oeiras Valley the audience can attend four concerts each night. A Cor do Som, Diana Castro, Olavo Bilac, who will be presenting 'Celebrar José Cid', Picas, Tiago Nacarato and Milhanas will perform over the three days on stage Nortada, while Maria Bethânia, Pierre Aderne, Olavo Bilac, Joss Stone and The Black Mamba will perform on the main stage.



OutJazz

2nd, 9th, 16th, 23rd and 30th July; at 5 pm; in various green spaces in Oeiras (train: Cascais line). Free entry. More information at: outjazz.pt

Jazz, soul, funk and hip-hop will again be heard in the Sunday afternoons in the gardens of Oeiras. With the intention of keeping culture alive and filling the green spaces with colour, social interaction, music and good vibrations, Out Jazz invites Portuguese artists and musicians to provide fun afternoons until sunset. Between Parque dos Poetas, Quinta Real de Caxias, Parque Urbano de Miraflores, Parque Urbano do Jarmor and the gardens of Palácio Marquês de Pombal, there will be performances by Larry Quest, Black Po-made, Godi Osegueda, Kierastoboy and Jeff Lennon.



15ª EDIÇÃO
PASSEIO MARÍTIMO DE ALGÉS
PORTUGAL



NOS Alive

6th, 7th, 8th July; from 5 pm; Passeio Marítimo de Algés (train: Cascais line, station: Algés).
Tickets: 74 euros. More information at: nosalive.com

Passeio Marítimo de Algés hosts another edition of the NOS Alive festival. Standing out as one of the best festivals in the European circuit for the last 15 years and having been the most popular music event of 2022, this year the festival promises to keep up the tradition with three full days. Red Hot Chili Peppers and The Back Keys are the headliners on the first day; Arctic Monkeys and Lil Nas X, on the second and Sam Smith and Queens of the Stone Age on the third. There will also be many other bands performing, as well as different activities in the various spaces of the premises.



Cool Jazz

From 8th to 29th July; from 7 pm; Hipódromo Manuel Possolo; Parque Marechal Carmona;
Jardins Casa Histórias Paula Rego (train: Cascais line, station: Cascais | bus: 27). Tickets: from 35 to 75 euros.
More information at: cooljazz.pt

The month of July is full of unique concerts in Cascais. The experience of the Cool Jazz festival begins before the first chords with the space Cool Pick&Go, at Parque Marechal Carmona. The audience has various gastronomic options to choose for dinner and can enjoy all the concerts. With three performances each night, starting with the Cascais Jazz Sessions By Smooth FM, following with the First and ending with the Great concert on the main stage, this festival will present renowned names such as Lionel Richie, Van Morrison, Ben Harper, Kings Of Convenience, Norah Jones, Snarky Puppy and Tiago Bettencourt.



SINTRA

MITOS E LENDAS

C E N T R O I N T E R A T I V O

Come and discover the mysteries of Sintra

We will take you on an amazing journey through the stories and places that have imbued this region with mystery since time immemorial and have made Sintra one of the most popular destinations in the world.

Stories of legends, reality mixed with fiction, mythical beings and distinguished visitors. See it all in 4D movies, holograms, videomapping and other technologies...

Sintra Tourism Office
Praça da República, N.º 23, 2710-616 Sintra
Tel. 219 231 157 • info@lismarketing.pt

Every day from 10am to 6.30pm
(last entry at 5.30pm)

www.visitlisboa.com





City of Lisboa

Useful Information

Lisboa is the capital of Portugal and the country's biggest city, located on the estuary of the Tejo river, on the European Atlantic coast. It is continental Europe's westernmost capital. Portugal's official language is Portuguese. Derived from Latin roots, Portuguese is the third most spoken European language in the world, with around 200 million speakers.

Around 3 million people live in the Lisboa region, with around 600 thousand living in the capital itself. The Portuguese Constitution allows religious freedom, with various religions being practised in Portugal.

Electric voltage: 230 / 400 volts, on a 50-hertz frequency. The electric sockets adhere to European standards. Blade plugs (US standard) must be used in conjunction with a 230 volts transformer, as well as an adaptor

In Lisboa winters are mild and summers hot, though moderated by its location near the sea. During spring and autumn there are usually sunny days with mild temperatures.

Local currency and Payments

The Euro is Portugal's official currency, having been introduced in January 2002. 1 Euro is divided into 100 cents. There are coins of 1, 2, 5, 10, 20 and 50 cents and 1 and 2 Euros. The bills can be distinguished by their size and colour and have the following face values: 5, 10, 20, 50, 100, 200 and 500 Euros. In Portugal, payments can be made in cash, bank transfer, cheque, credit cards and debit cards.

	Jan/Mar	Apr/Jun	Jul/Sep	Oct/Dec
Air Temperature	17,1°C • 62,8°F	21,8°C • 71,2°F	26,3°C • 79,3°F	17,2°C • 53°F
Sea Temperature	14,9°C • 58,8°F	17,5°C • 63,5°F	19,5°C • 67,1°F	16,1°C • 60°F

Tax Free

Those who live outside the EU can benefit from VAT exemption in Portugal if they make purchases worth at least 50 euros and only for private use. For this purpose, you must present an identification document (passport or other official) to the seller, who will provide proof of the purchase registration. The process is completed when leaving the country, through an electronic terminal in the customs area of the airport, to certify the export of the goods acquired in Portugal and to know whether or not is entitled to a VAT refund.



Timetables

Buses: everyday from 5.30am to 12.30am.

Night service "rede da madrugada" from 12.30am to 5.30 am.

Metro: everyday from 6.30am to 1am

Banks: Monday to Friday from 8:30am to 3pm

Shopping Centres: everyday from 10am to 10pm

Shopping: Monday to Friday and Saturdays from 10am to 7pm

Restaurants: lunch from 12pm to 3pm, dinner from 7pm to 10pm

Post: Monday to Friday 9am to 6pm.

The post offices at Praça dos Restauradores, Cabo Ruivo and the Airport are open on weekdays until 8pm, and with restricted timetables on weekends.

Embassies: Monday to Friday from 9am to 3pm

Pharmacies: Monday to Friday 9am to 7pm, some pharmacies close at lunchtime. Saturdays from 9am to 1pm. When closed all pharmacies indicate the nearest open pharmacy on duty, where there is a 24-hour service.

Health

The Hospital Emergency Services must only be used for serious emergencies.

In order to have access to this service, E.U. citizens who are non-resident in Portugal must show their passport or ID card and E111 and E112 forms.

QUALIHEALTH
 Medical care for foreign patients
 24/hours
 T. +351 211 301 075
www.qualihealth.eu

Measures - Conversion chart

1 cm = 0,393 inch
 1 metro = 3,28 feet 1.09 yard
 1 km = 0,62 mile

1 litro = 0,26 gallon (USA)
 0,22 gallon (UK)
 1kg = 2.204 pounds

Useful Telephone Numbers

Telephone codes

International calls:
 00 + country area code

Portugal area code:
 Portugal +351

National Emergency Number:
 112

Police - Tourism Station at Praça dos Restauradores:
 (+351) 213 421 634 | (+351) 213 421 623

Fire Service:
 (+351) 213 422 222

Trains (CP):
 (+351) 808 208 208

Buses:
 (+351) 213 613 000

Metro:
 (+351) 217 980 600

Taxi - Autocoope:
 (+351) 217 932 756

Lisboa Airport (arrivals and departures)
 (+351) 218 413 700

"Ask Me" Tourism Office - Airport:
 (+351) 218 450 660

Time Differences (GMT/UTC GMT/UTC +1 in Summer)

-8h: USA - Los Angeles
 -5h: USA - New York
 -3h: Brazil - Brasília
 =: UK - London
 +2h: South Africa - Capetown
 +1h: France - Paris; Germany - Bonn;
 Holland - Amsterdam; Italy - Rome;
 Norway - Oslo; Spain - Madrid;
 Sweden - Stockholm
 +9h: Japan - Tokyo
 +10h: Australie - Canberra



Super Bock Super Rock

14th, 15th and 16th July; from 3 pm; Herdade do Cabeço da Flauta, Meco (train: starting from Campolide).

Tickets: from 35 to 225 euros. More information at: superbocksuperrock.pt

Meco will once again be filled with rhythm to celebrate another Super Bock Super Rock festival. Three days full of music, from the most authentic to the most recent trends. More than 40 artists will go on the Super Bock, Somersby, Pull&Bear or LG by Radio SBSR stages. The idyllic scenery, the camping possibility and the beach right there are good reasons to attend, but the strongest reason will be the music which will be heard. The Offspring, Franz Ferdinand, The 1975, Wu-Tang Clan, DJ Premier, Father Jonh Misty, Rósín Murphy, James Murphy are some of the international names who will perform, as well as the Portuguese The Legendary Tigerman, Tomás Wallenstein, Sam The Kid with Orchestra and Orelha Negra, BIIA, Noiserv, Tara Perdida, Glockenwise, Amaura, Holly Hood, Nuno Lopes, Chico da Tina, Irma, Moullinex or Surma.



Guide



www.visitlisboa.com

MONUMENTS

MUSEUMS

CULTURE AND LEISURE

RESTAURANTS

DISCO AND PUBS

ACCOMMODATION

GET TO KNOW LISBOA

SHOPPING

TRANSPORT WITH DRIVER

RENT A CAR

GOLF



LISBOA CARD PARTNER

CREATE YOUR PERSONAL TOUR AT
www.visitlisboa.com/en



INFOLISBOA

Tourist information line
(Free calls)
T. 800 500 503
(International calls)
T. (+351) 210 079 347
From Monday to Friday
10am-7pm

ASK ME LISBOA

Aeroporto de Lisboa
Arrivals, Aeroporto
T. (+351) 218 450 660
7am-10pm
aeroreservas@lismarketing.pt

ASK ME LISBOA

Parque das Nações
Alameda dos Oceanos, Lisboa
T. (+351) 910 559 255
10am-1pm | 2pm-7pm
Closed on Sundays
and Mondays
parquedasnacoes
@lismarketing.pt

ASK ME LISBOA

Santa Apolónia CP Station
Largo dos Caminhos
de Ferro, Lisboa
T. (+351) 915 789 923
10am-1pm | 2pm-7pm
Closed on Mondays
and Tuesdays
stapolonia@lismarketing.pt

ASK ME LISBOA

Campo Pequeno
Praça do Campo Pequeno,
Lisboa
T. (+351) 919 878 349
10am-1pm | 2pm-7pm
Closed on Sundays
and Mondays
campopequeno@lismarketing.
pt

ASK ME LISBOA

São Sebastião
Metro station São Sebastião
Av. António Augusto de Aguiar
(Poente)
T. (+351) 910 559 236
10am-1pm | 2pm-7pm
Closed on Sundays
and Mondays
saosebastiao@lismarketing.pt

ASK ME LISBOA

Palácio Foz
Praça dos Restauradores,
Lisboa
T. (+351) 213 463 314
Closed for works
palaciofoz@lismarketing.pt

ASK ME LISBOA

Regedor
Rua Jardim do Regedor,
50, Lisboa
T. (351) 910 153 925
10am-6:30pm
regedor@lismarketing.pt

ASK ME LISBOA

Rossio CP Station
Rua 1.º de Dezembro, Lisboa
T. (+351) 914 210 650
9am-1pm | 2pm-6pm
Closed on Sundays
and Mondays
rossioestacao@lismarketing.pt

ASK ME LISBOA

Baixa Chiado
Metro station Baixa - Chiado
Largo do Chiado,
Rua da Misericórdia
T. (+351) 910 609 312
9am-1pm | 2pm-6pm
Closed on Sundays
and Mondays
baixachiado@lismarketing.pt

ASK ME LISBOA

Rossio
Praça D. Pedro IV, Lisboa
T. (+351) 910 518 004
10am-1pm | 2pm-7pm
Closed on Sundays
and Mondays
rossio@lismarketing.pt

ASK ME LISBOA

Arco Rua Augusta
Rua Augusta, 2, Lisboa
T. (+351) 210 998 599
10am-7pm
(last entry at 6:45pm)
arcoaugusta@lismarketing.pt

ASK ME LISBOA

Interpretive Centre
History of Cod
Terreiro do Paço
- Torreão Nascente
T. (+351) 211 126 155
10am-1pm | 2pm-7pm
(last entry at 6pm)
info@historiabacalhau.pt

ASK ME LISBOA

Lisboa Story Centre
Praça do Comércio,
78 - 81, Lisboa
T. (+351) 211 941 099
10am-7pm
(last entry at 6pm)
lisboastorycentre
@lismarketing.pt

ASK ME LISBOA

Terreiro do Paço
Praça do Comércio, Lisboa
T. (+351) 210 312 810
10am-7pm
terreirodopaco@lismarketing.pt

ASK ME LISBOA

Centro Tejo
Station Sul e Sueste
Terreiro do Paço
T. (+351) 211 163 426
10am-1pm | 2pm-7pm
centrotejo@lismarketing.pt

ASK ME LISBOA

Doca da Marinha
Av. Infante D. Henrique S/N
T. (+351) 211 163 427
10am-1pm | 2pm-7pm
Closed on Wednesdays
and Thursdays
docadamarinha@lismarketing.pt

ASK ME LISBOA

Cais do Sodré
Praça do Duque de Terceira,
1200-161 Lisboa
T. (+351) 912 484 108
9am-1pm | 2pm-6pm
caisdosodre@lismarketing.pt

ASK ME LISBOA

Belém Mosteiro dos Jerónimos
Jardim Vasco da Gama,
1400-206 Lisboa
T. (+351) 910 517 981
9am-1pm | 2pm-6pm
Closed on Mondays, 1st and 3rd
Sunday of each month
belem@lismarketing.pt

ASK ME LISBOA

Torre de Belém
Jardim Torre de Belém, Lisboa
T. (+351) 910 517 886
9 am-1pm | 2pm-6pm
belemtorre@lismarketing.pt

ASK ME LISBOA

Pilar 7 Experience
Av. da Índia, Pilar 7 da Ponte
25 de Abril
T. (+351) 211 117 880
10am-6pm
(last entry at 5pm)
pilar7@lismarketing.pt

ASK ME LISBOA

Alcântara
Largo das Fontainhas, Lisboa
T. (+351) 910 559 999
9am-1pm | 2pm-6pm
Closed on Sundays
and Mondays
alcantara@lismarketing.pt

ASK ME SINTRA

NewsMuseum
Rua Visconde de Monserrate
26, Sintra
T. (+351) 910 495 618
10am-6:30pm
(last entry at 5:30pm)
newsmuseum@lismarketing.pt

ASK ME SINTRA

Mitos e Lendas
Praça da República, 23, Sintra
T. (+351) 219 231 157
10am-6:30pm
(last entry at 5:30pm)
sintra@lismarketing.pt

ASK ME SINTRA

Sintra Estação
Av. Dr. Miguel Bombarda,
Sintra
T. (+351) 211 932 545
9am-1pm | 2pm-5:30pm
sintraestacao@lismarketing.pt

ASK ME ARRÁBIDA

Travessa Frei Gaspar,
10, Setúbal
T. (+351) 916 442 247
9am-1pm | 2pm-6pm.
Closed on Sundays
and Mondays
arrabida@lismarketing.pt

Services and discounts included

TOP TEN

Jerónimos Monastery	Free
Belém Tower	Free
Pilar7 Bridge Experience	Free
Lisboa Story Centre	Free
National Tile Museum	Free
National Coach Museum	Free
National Ancient Art Museum	Free
Sintra Mitos e Lendas	Free
Santa Justa Elevator	Free
Mafra National Palace	Free

TRANSPORTS

METRO	Free
CARRIS	Free
AEROBUS	-25%
CP-Camios de Portugal	Free
FERTAGUS	Free

MONUMENTS AND MUSEUMS

National Pantheon	Free
Ajuda National Palace	Free
Royal Treasury Museum	Free
Chiado Museum - National Museum of Contemporary Art	Free
National Ethnology Museum	Free
National Costume Museum	Free
National Museum of Theatre and Dance	Free
National Archaeology Museum	Free
National Music Museum	Free
Dr. Anastácio Gonçalves Museum-Residence	Free
Republican National Guard Museum	Free
Ceramics Museum - Sacavém	Free
Air Museum	Free
Batalha Monastery	Free
Alcobaça Monastery	Free
Tomar Convent of Christ	Free
Museum of Neo Realism - Vila Franca de Xira	Free
Museum of the work Michel Giacometti	Free
Casa da Cerca - Museum of Contemporary Art - Almada	Free
Chapel of the Holy Spirit of the Mareantes - Sesimbra	Free
Setúbal Municipal Gallery	Free
Maritime Museum - Sesimbra	Free
Convento de Jesus - Museum of Setúbal	Free
Mourisca Tide Mill - Herdade da Mourisca	Free
NrpsMuseum	Free
Arpad Szenes - Vieira da Silva Foundation	-50%

Water Museum	-50%
Museum of Macau Cultural and Scientific Centre	-50%
Communications Museum	-50%
São Roque Museum	-40%
Medeiros e Almeida Foundation	-40%
Museum Sporting	-40%
Carris Museum	-30%
Future Museum of Contemporary Art MAC/CCB	-20%
Fragata D. Fernando II e Glória	-20%
Museum Calouste Gulbenkian	-20%
Calouste Gulbenkian Museum - Modern Collection	-20%
Ruins of Igreja do Carmo - Archaeological Museum	-20%
Quinta da Regaleira	-20%
Fado Museum	-20%
Amália Rodrigues Museum - Residence	-20%
Museum of Mechanical Music - Palmela	-20%
Studio-museum Júlio Pomar	-20%
The Orient Museum	-20%
Museum of Aljube	-20%
Pharmacy Museum	-20%
Museum School of Portuguese Decorative Arts	-20%
Lisbon Cathedral	-20%
Church Tower in St. Jorge's Castle	-20%
Navy Museum	-20%
Queluz National Palace	-15%
Benfica Museum / Cosme Damião	-15%
MAAT - Museum of Art, Architecture and Technology	-15%
Sintra National Palace	-10%
Pena National Palace and Park	-10%
Palácio Biester (Sintra)	-10%
Natural History Science Museum	-10%

VISITOR ATTRACTIONS

Rua Augusta Arch	Free
Cold Greenhouse	Free
Codfish History Interpretation Centre	Free
CIRÉS - Roaz Interpretive Center of the Sado Estuary	Free
EVOA - Birdwatching Tagus River	-30%
Navy Planetarium	-20%
Discoveries Monument	-20%
Belém Cultural Centre	-20%
Vasco da Gama Aquarium	-20%
José Saramago Foundation	-1€
Lisbon Aquarium	-15%
Knowledge Pavilion - Living Science	-15%
Lisboa Zoo	-15%
Parques de Sintra - Monte Lus: Capuchos Convent /	
Monseratte Park / Moorish Castle	-15%
O Cubo - Immersivus Gallery Lisboa	-15%

Cable Car Parque das Nações	-10%
Culturgest - Exhibitions	-10%

TOURS

Lisbon Walker	-33%
Barco Varino da Liberdade - Vila Franca de Xira	-25%
Tuk Guide Portugal	-25%
CitySightseeing	-25%
VR Tours Lisboa	-25%
Naturway	-20%
Estrela D'Alva	-20%
Selection Tours	-20%
Sado Arrábida	-20%
Nosso Tejo	-20%
BOOST Portugal	-20%
SeaEO Tours	-15%
Hippotrip	-15%
Cityrama	-15%
PalmaYachts	-15%
Lisbon Destination Tours	-15%
Lisbon by Boat	-15%
Cooltour Lisbon	-15%
Vertigem Azul	-10%
Yellow Boat River Tour	-10%
Yellow Bus - Hop on - off	-10%
Yellow Bus - Tramcar Tour	-10%
Lisboat	-10%
Inside Lisbon	-10%
FRS Portugal	-10%
Vertente Natural	-10%
Blue Cruises	-10%
Setúbal Alive	-10%

OTHER

Viniportugal	-20%
Amoreiras Shopping Center	-5€
Amoreiras Shopping Center Miradouro / Belvédere	-1€
Casa da Baía - Setúbal	-15%
Mercearia Confiança - Setúbal	-15%
Casa do Turismo	-15%
El Corte Ingles	Welcome PACK + 10%
Lisboa Shop - Terreiro do Paço	-10%
Freeport Fashion Outlet	-10%
Fado in Chiado	-10%
Sant'Anna Faience and Tile Factory	-5%

 Temporarily closed

Closing days

MONDAY

Jerónimos Monastery	
Belém Tower	
National Tile Museum	
National Coach Museum	
National Ancient Art Museum	
National Pantheon	
Chiado Museum - National Museum of Contemporary Art	
National Ethnology Museum	
National Costume Museum	
National Museum of Theatre and Dance	
Dr. Anastácio Gonçalves Museum-Residence	
Ceramics Museum - Sacavém	
Air Museum	
Museum of Neo Realism - Vila Franca de Xira	
Museum of the work Michel Giacometti	
Casa da Cerca - Museum of contemporary art - Almada	
Setúbal Municipal Gallery	
Convento de Jesus - Museum of Setúbal	
Maritime Museum - Sesimbra	
Mourisca Tide Mill - Herdade da Mourisca	
Arpad Szenes - Vieira da Silva Foundation	

Water Museum	
Museum of Macau Cultural and Scientific Centre	
São Roque Museum	
Museum Sporting	
Future Museum of Contemporary Art MAC/CCB	
Fragata D. Fernando II e Glória	
Fado Museum	
Amália Rodrigues Museum - Residence	
Museum of Mechanical Music - Palmela	
Studio-museum Júlio Pomar	
The Orient Museum	
Museum of Aljube	
Natural History Science Museum	
Cold Greenhouse	
Navy Planetarium	
EVOA - Birdwatching Tagus River	
Discoveries Monument	
Knowledge Pavilion - Living Science	
Culturgest - Exhibitions	

TUESDAY

Mafra National Palace	
Museum School of Portuguese Decorative Arts	
MAAT - Museum of Art, Architecture and Technology	
Arpad Szenes - Vieira da Silva Foundation	
Museum Calouste Gulbenkian	
Museum of Mechanical Music - Palmela	

WEDNESDAY

Museum of Mechanical Music - Palmela	
Ajuda National Palace	

THURSDAY

Museum of Mechanical Music - Palmela	
--------------------------------------	--

SATURDAY

Museum of Macau Cultural and Scientific Centre	
--	--

SUNDAY

National Music Museum	
Republican National Guard Museum	
Museum of Macau Cultural and Scientific Centre	
Portuguese Communications Foundation	
Medeiros e Almeida Foundation	
Carris Museum	
Carmo Archeological Museum	
Lisbon Cathedral	
José Saramago Foundation	
Pharmacy Museum	

Lisbon
Feel the city.



Prices

	24 h	48 h	72 h
ADULT	22 euros	37 euros	46 euros
CHILDREN (4-15)	15 euros	21 euros	26 euros

Prices valid from april 1st 2023 until march 31st 2024

Lisbon

Feel the city



Travel around town **free on public transport**, visit **39 museums and monuments for free** and take advantage of more than **80 different discount opportunities.**

www.visitlisboa.com
online information and sales



PATRIMONIO CULTURAL
Direção-Geral do Património Cultural

CP
COMBOIOS DE PORTUGAL

carris 




fertagus



RUA AUGUSTA ARCH

LISBOA CARD PARTNER

Symbol of a triumphant Lisboa, this monument not only offers a magnificent view of the city, it tells a part of its history.

Rua Augusta, 4, Lisboa | T. (+351) 210 998 599
10am-7pm. Last entry 15 minutes before closing.
www.visitlisboa.com



DISCOVERIES MONUMENT

LISBOA CARD PARTNER

Riverside monument built in 1960 to commemorate the 500th anniversary of the death of Infante D. Henrique, promoter of the Discoveries. Views of Lisbon and the Tagus River from the top.

Av. Brasília, Lisboa | T. (+351) 213 031 950
March to September, 10am-7pm (last entry at 6.30pm). October to February, 10am-6pm (last entry at 5.30pm). Open on Monday from May until September. Closed: January 1, May 1, December 25.
🚶 727, 728 🚏 15 Belém (Cascais line)
www.padraodosdescobrimentos.pt



ST GEORGE'S CASTLE

Testament to the city's past. Panoramic views over the city.

R. de Santa Cruz do Castelo, Lisboa
| T. (+351) 218 800 620

November to February, 9am-6pm (last entry at 5.30pm). March to October, 9am-9pm (last entry at 8.30pm). Periscope - Tower of Ulysses: 10am-5pm (depending on weather conditions).

🚶 737 🚏 12, 28

www.castelodesaojorge.pt



JERÓNIMOS MONASTERY

LISBOA CARD PARTNER

16th century building. UNESCO World Heritage classification. Commemorates the Portuguese Discoveries.

Praça do Império, Lisboa | T. (+351) 213 620 034/38
October to April, 10am-5.30pm (last entry at 5pm). May to September, 10am-6.30pm (last entry at 6pm). Closed: Monday, January 1, Easter Sunday, May 1, June 13 and December 24 and 25.
🚶 727, 728, 729, 751 8 🚏 15 Belém (Cascais line)
www.mosteirojeronimos.pt



CAMPO PEQUENO

Campo Pequeno is a historic building, regarded from a bullfighting perspective as the Bullfighting on Horseback Capital of the World. Open all year.

Centro de Lazer do Campo Pequeno, Lisboa
T. (+351) 217 998 450

🚶 744, 783, 754, 736, 727, 738 🚏 Campo Pequeno

🚶 Entrecampos

www.campoqueno.com

GRAÇA CHURCH

Largo da Graça, Lisboa
T. (+351) 218 873 943
info@igrejadagraça.pt

MONUMENTS



BIESTER PALACE LISBOA CARD PARTNER

The Biester Palace is located in the heart of Sintra, perfectly integrated into the stunning scenery that made the village of Sintra famous as the world capital of Romanticism.

Av. Almeida Garrett, 1A, Sintra | T. (+351) 218 708 800
April to October, 10am- 8pm (last entry at 7pm). November to March, 10am-6:30pm (last entry at 5:30pm).

🚗 Sintra | biester.pt

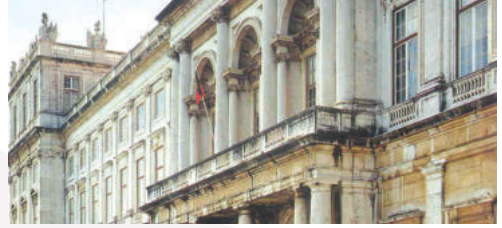


FRONTEIRA PALACE

One of the most beautiful 17th century Lisbon monuments that, although functioning as a museum, is inhabited by the descendants of Dom João de Mascarenhas, the 1st Marquis de Fronteira. This is one of the charms of this space that contains the largest collection of tiles in their place of origin.

Largo São Domingos Benfica, 1, Lisboa | T. (+351) 217 784 599
Palace: June-September, Monday to Saturday, 10.30am; 11am; 11.30am; 12am. October-May, Monday-Saturday, 11am; 12am. Gardens (last admittance half an hour before the end of the visits): June-September, Monday to Friday, 10.30am-1pm, 2pm-5pm; Saturday, 10.30am-1pm. October-May, Monday to Friday, 11am-1pm, 2pm-5pm; Saturday, 11am-1pm.

www.frenteira-alorna.pt



AJUDA NATIONAL PALACE LISBOA CARD PARTNER

Neoclassical building built in 1796, was official residence of the royal family until 1910. Nineteenth century environments and important collections of decorative arts of the eighteen and nineteen centuries.

Largo da Ajuda, Lisboa | T. (+351) 213 620 264
10am-5pm (last entry at 4.30pm). Closed: Wednesday, January 1, Easter Sunday, May 1, June 13 and December 25 Free on 1st Sunday of the month (all day).

🚗 714, 732, 742, 760 🚏 18 | www.palacioajuda.pt



MAFRA NATIONAL PALACE LISBOA CARD PARTNER

Majestic eighteen century palace. Its precious library and collection of Italian sculptures, set of bells and six organs are unique in the world.

Terreiro D. João V, Mafra | T. (+351) 261 817 550
Palace, 9am-5pm (last entry at 4.15pm). Center for Sacred Art and Conventual Center closed from 1pm to 2pm. Library (Readers), Monday to Friday, 9.30am-1pm and 2pm-4pm. Basílica, every day, 9.30am-1pm and 2pm-5.30pm. Closed: Tuesday, January 1, Easter Sunday, May 1, Thursday of Ascension (Municipal Day) and December 25.

www.palaciomafra.pt



PENA NATIONAL PALACE LISBOA CARD PARTNER

A romantic palace with exuberant architecture, art collection and testimonies of royalty.

Everyday, 10am-6pm.

🚗 Sintra (Sintra line)

www.parquesdesintra.pt



QUELUZ NATIONAL PALACE

LISBOA CARD PARTNER

A charming 18th century palace with spacious gardens studded with statuary.

Largo do Palácio, Queluz | T. (+351) 214 343 860

Everyday, 10am-6pm.

🚗 Queluz (Sintra line)

www.parquesdesintra.pt



LISBOA CATHEDRAL

LISBOA CARD PARTNER

Built in the 12th century by the first King of Portugal, D. Afonso Henriques

Largo da Sé, Lisboa | T. (+351) 218 866 752

info@sedelisboa.pt

www.sedelisboa.pt



SINTRA NATIONAL PALACE

LISBOA CARD PARTNER

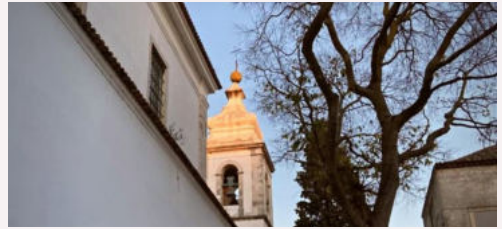
A former royal palace with a captivating mixture of Mudejar, Manueline and Renaissance architecture.

Largo Rainha D. Amélia, Sintra | T. (+351) 219 106 840

Everyday, 9.30am-6pm.

🚗 Sintra (Sintra line)

www.parquesdesintra.pt



TOWER OF THE CHURCH OF ST GEORGE'S CASTLE

LISBOA CARD PARTNER

Old Mosque transformed into a Church.

Here, D. Afonso Henriques entered in procession and royal procession, after the conquest of the city of Lisboa.

Largo de Santa Cruz do Castelo, 15, Lisboa |

T. (+351) 215 806 032

🚗 737 🚗 12, 28

geral@torredaigrejadocastelo.pt

www.torredaigrejadocastelo.pt



QUINTA DA REGALEIRA

LISBOA CARD PARTNER

A palace with exotically mysterious associations.

Quinta da Regaleira, Sintra | T. (+351) 219 106 650

Visits by appointment reservations recommended. Daily visits, 10am-8pm. Closed: January 1 and December 24, 25 and 26.

www.regaleira.pt



BELÉM TOWER

LISBOA CARD PARTNER

Lisboa's ex libris. Masterpiece of military architecture in the Manueline style by 16th cent. architect Francisco Arruda.

A UNESCO World Heritage building.

Av. Brasília, Lisboa | T. (+351) 213 620 034/38

October to April, 10am-5.30pm (last entry at 5pm). May to September, 10am-6.30pm (last entry at 5pm). Closed: Monday, January 1, Easter Sunday, May 1, June 13 and December 25.

🚗 727, 728, 729, 751 🚗 15 Belém (Cascais line)

www.torrebelem.pt

OTHER MONUMENTS

ESTRELA BASILICA

One of Lisbon's most impressive churches. The dome is a city landmark. 18th cent.

Largo da Estrela, Lisboa

CONVENT OF CHRIST

LISBOA CARD PARTNER

Colina do Castelo, Tomar | T. (+351) 249 313 481

October to May, 9am-5.30pm (last entry at 5pm). June to September, 9am-6.30pm (last entry at 6pm). Closed: January 1, March 1, Sunday Easter, May 1 and December 25.

www.conventocristo.pt

SÃO VICENTE DE FORA CHURCH AND MONASTERY

Established in 1147 to render thanks for the conquest of Lisboa from the Moors.

Largo de São Vicente, Lisboa

ALCOBAÇA MONASTERY

LISBOA CARD PARTNER

Praça 25 de Abril, Alcobaca | T. (+351) 262 505 120

October to March, 9am-5pm (last entry at 4.30pm). April to September, 9am-7pm (last entry at 6.30pm). Closed: January 1, Sunday Easter, May 1, August 20 and December 25.

www.mosteiroalcobaca.pt

BATALHA MONASTERY

LISBOA CARD PARTNER

Largo Infante D. Henrique, Batalha | T. (+351) 244 765 497

October to March, 9am-5.30pm (last entry at 5pm). April to September, 9am-6.30pm (last entry at 6pm). Closed: January 1, Sunday Easter, May 1, August 14 and December 25.

www.mosteirobatalha.pt

NATIONAL PANTHEON

LISBOA CARD PARTNER

Santa Engrácia Church, Lisbon's largest baroque structure.

Campo de Santa Clara, Lisboa

Closed on public holidays (June 13)



INTERPRETATION CENTER OF TORRES VEDRAS LINES

Come and discover the largest defensive campaign system in Europe – built between 1809 and 1810 to protect Lisbon from the 3rd French Invasion of Portugal, one of the most striking episodes of the Napoleonic invasions.

Praça Dr. Eugénio Dias, N.º 12, Sobral de Monte Agraço

T. (+351) 261 942 296

Tuesday to Sunday from 10 am to 6 pm.

cilt@cm-sobral.pt

www.cilt.pt and www.rhlt.pt



SINTRA BUDDHIST TEMPLE

One of four traditional temples of Kadampa Buddhism in the world. Open for free visits and talks, meditation classes and retreats. It has a shop, cafe, garden and rooms for rent.

Rua Moinho do Gato, 5, Várzea de Sintra

T. (+351) 960 007 110

Tuesday to Sunday, 10am-7pm.

www.kadampa.pt



FERNANDO PESSOA HOUSE

The house in which Fernando Pessoa spent the last 15 years of his life.

Rua Coelho da Rocha, 16-18, Lisboa | T. (+351) 213 913 270
Tuesday to Sunday, 10am to 6pm. Closed on Mondays.

🚗 709, 713, 720, 738, 774 🚏 25 e 28 🗺️ Rato

info@casafernandopessoa.pt

www.casafernandopessoa.pt



MEDEIROS E ALMEIDA MUSEUM

LISBOA CARD PARTNER

An unmissable collection of decorative arts: furniture, Chinese porcelain, clocks and watches, painting and sculpture.

Rua Rosa Araújo, 41, Lisboa | T. (+351) 213 547 892

Monday to Saturday, 10am – 5pm. Closed: Sunday.

info@museumedirosealmeida.pt

museumedirosealmeida.pt



AMÁLIA RODRIGUES MUSEUM-RESIDENCE

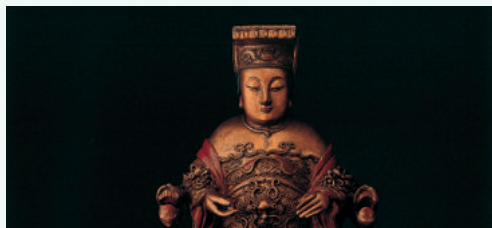
LISBOA CARD PARTNER

The house where Fado's greatest icon lived for over half a century.

Rua de São Bento, 193, Lisboa | T. (+351) 213 971 896
Tuesday to Sunday, 10am-6pm.

🚗 706, 727

www.amaliarodrigues.pt



MACAU CULTURAL

AND SCIENTIFIC CENTRE

LISBOA CARD PARTNER

Books, multimedia and iconography on Chinese society.

Rua da Junqueira, 30, Lisboa | T. (+351) 213 617 570

Tuesday to Saturday, 10am-5pm

Sunday, 12pm-6pm.

🚗 714, 727, 732, 751, 756 🚏 15

geral@cccsm.pt

www.cccm.mctes.pt



DR. ANASTÁCIO GONÇALVES

MUSEUM-RESIDENCE

LISBOA CARD PARTNER

Paintings, ceramics, furniture and porcelain.

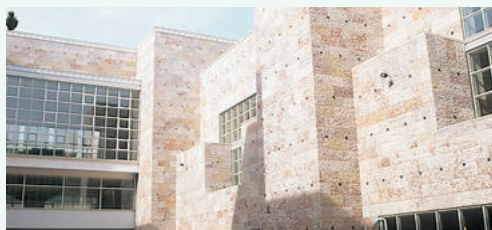
Av. 5 de Outubro, 6-8, Lisboa | T. (+351) 210 109 923

Tuesday to Sunday, 10am-6pm.

🚗 701, 720, 727, 732, 736, 738, 744, 783

🗺️ Picoas, Saldanha

www.cmuseuanastaciogoncalves.pt



BELÉM CULTURAL CENTRE

LISBOA CARD PARTNER

One of the biggest cultural centres in Europe.

Praça do Império, Lisboa | T. (+351) 213 612 400

Exhibition Centre, 10am-7pm (last entry at 6.15pm).

Closed on Monday.

www.ccb.pt

MUSEUMS



CULTURGEST

- CAIXA GERAL DE DEPÓSITOS FOUNDATION LISBOA CARD PARTNER

Exhibitions, dance, theatre, music, cinema, conferences.

Rua Arco do Cego, Lisboa | T. (+351) 217 905 454

Tuesday to Friday, 11am-6pm (last entry at 5.30pm). Saturdays, Sundays and holidays, 11am-7pm (last entry at 6.30pm). Closed on Monday. Audio guides available for free. School visits and groups.

🚶 207, 722, 735, 736, 742, 744, 749, 754, 756, 783, 727, 732, 738, 767

📍 Campo Pequeno

www.culturgest.pt

CORDOARIA

Rua da Junqueira, Lisboa

T. (+351) 210 977 376

ccm.marinha.pt



FRAGATA D. FERNANDO II E GLÓRIA

LISBOA CARD PARTNER

Get on board and take a journey through the history of the last ship of the Portuguese Navy to sail exclusively by sail and the last ship of the "Carreira da Índia".

Largo Alfredo Dinis, Almada | T. (+351) 212 746 295

From May 1st to September 30th, from Tuesday to Sunday, from 10 am to 6 pm; from 1st October to April 30th, from Tuesday to Sunday, from 10 am to 5 pm. Closed on Mondays, January 1st, Easter Sunday, May 1st and December 25th.

fernandoegloria@marinha.pt

ccm.marinha.pt/pt/dfernando



JOSÉ SARAMAGO FOUNDATION

LISBOA CARD PARTNER

Casa dos Bicos is the home of José Saramago Foundation. Public conferences, concerts, debates, and a permanente exhibition about the life and the work of the 1998's Nobel Prize of Literature.

Casa dos Bicos, Rua dos Bacalhoeiros, 10, Lisboa

T. (+351) 218 802 040

Monday to Saturday, 10am-6pm.

www.josesaramago.org



ARPAD SZENES-VIEIRA DA SILVA

FOUNDATION

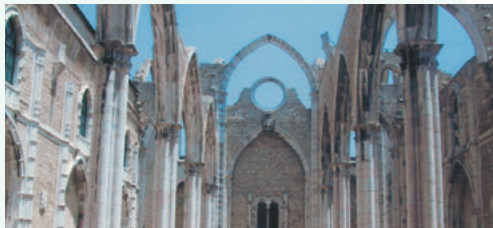
LISBOA CARD PARTNER

The Foundation has the purpose to disseminate and to study of the work of the couple Arpad Szenes and Maria Helena Vieira da Silva, as well as other artists, intellectuals and friends, domestic or foreign and contemporary to them.

Praça das Amoreiras, 56, Lisboa | T. (+351) 213 880 044

Tuesday to Sunday, 10am-6pm. Closed: Monday and holidays.

www.fasvs.pt



CARMO ARCHAEOLOGICAL MUSEUM

LISBOA CARD PARTNER

The city's history from the pre-historical period to the present day.

Largo do Carmo, Lisboa | T. (+351) 213 478 629

June to September, 10am-7pm. October to May, 10am to 6 pm.

Closed on Sunday.

🚶 758 🚶 28 📍 Baixa/Chiado.

www.museumarqueologicocarmo.pt



BENFICA COSME DAMIÃO MUSEUM

LISBOA CARD PARTNER

The trophies, the facts and the people who made Benfica a landmark of world sport.

Estádio do Sport Lisboa e Benfica, Av. Eusébio da Silva Ferreira, Lisboa | T. (+351) 217 219 590

Every day, 10am-6pm (on match days the museum closes at the beginning of the game).

🚶 3, 64, 729, 750, 765, 767, 799

🏠 Colégio Militar / Alto dos Moinhos

www.museubenfica.pt



LISBOA MUSEUM - PIMENTA PALACE

Archaeological finds, paintings, engravings, documenting the history of Lisboa.

Campo Grande, 245, Lisboa | T. (+351) 217 513 200

10am-6pm. Closed on Monday.

🚶 701, 736, 747, 750 🏠 Campo Grande

www.museudelisboa.pt



LISBOA MUSEUM - ST. ANTHONY

Iconography, books, vestments and religious objects.

Largo de Santo António da Sé, 22, Lisboa

T. (+351) 218 860 447

10am-6pm. Closed on Monday.

🚶 737 🚏 12, 28

www.museudelisboa.pt



MONEY MUSEUM

The Money Museum, located in the heart of Lisboa's historic centre, offers its visitors the opportunity to discover rare examples of banknotes and coins from all over the world, in an innovative, interactive experience. Visitors are also invited to go to the crypt of the old church and discover the only section accessible to the public of the D. Dinis Wall, classified as a National Monument.

Banco de Portugal, Largo de São Julião, Lisboa

T. (+351) 213 213 240

Wednesday to Sunday, 10am-6pm. Closes on 1st January,

1st May, 24th and 25th December.

info@museudodinheiro.pt

museudodinheiro.pt



CHIADO MUSEUM

LISBOA CARD PARTNER

National Museum of Contemporary Art (post 1850 works).

Rua Serpa Pinto, 4, Lisboa | T. (+351) 213 432 148

Tuesday to Sunday, 10am-6pm. Closed: Monday, January 1, Easter Sunday, May 1, June 13 and December 25.

🚶 758 🚏 28 🏠 Baixa-Chiado

www.museuar.tecontemporanea.pt

MUSEUMS



FADO MUSEUM LISBOA CARD PARTNER

Everything about Fado and the Portuguese guitar.
Largo do Chafariz de Dentro, Lisboa | T. (+351) 218 823 470
10am-6pm (last entry at 5.30pm). Closed: Monday, January 1,
May 1 and December 25.
🚗 208, 728, 735, 759, 794
www.museudofado.pt



WATER MUSEUM LISBOA CARD PARTNER

This pumping station was in service between 1880 and 1928. Hosts the permanent exhibition of the museum about history, science, technology and sustainability.
Rua do Alviela, 12, Lisboa | T. (+351) 218 100 215
Tuesday to Saturday, 10am-5.30pm. Closes for lunch from
12.30pm to 1.30pm. Closed on national holidays.
🚗 735, 794, 706, 712, 782 🚏 Sta. Apolónia 🗺 Santa Apolónia
www.epal.pt



PHARMACY MUSEUM LISBOA CARD PARTNER

Pharmacy objects from several civilizations.
Rua Marechal Saldanha, 1, Lisboa | T. (+351) 213 400 680
Monday to Friday, 10am to 6 pm (last entry 5:30pm) Weekends,
10am to 1pm, and 2pm to 6pm.
Closed: Easter Sunday, December 25th and January 1st.
🚗 758 (Praça Luís de Camões) 🚏 28 🗺 Chiado
museudafarmacia@anf.pt
www.museudafarmacia.pt



RAFAEL BORDALO PINHEIRO MUSEUM

Campo Grande, 382, Lisboa | T. (+351) 215 818 540
Tuesday to Sunday, 10am-6pm. Closed: Monday, January 1,
May 1, December 25.
🚗 701, 703, 736, 747, 750, 768 🗺 Campo Grande
www.museubordalopinheiro.pt



COMMUNICATIONS MUSEUM LISBOA CARD PARTNER

Documents, objects and equipment that bear witness to the evolution of communication.
Rua do Instituto Industrial, 16, Lisboa | T. (+351) 213 935 000 / 159
Monday to Friday, 10am-6pm. Saturdays, 2pm-6pm. Last
Thursday of the month, 10am-10pm, with free entry between
6pm-10pm. Closed on public holidays.
🚗 706, 714, 728, 732, 760 🚏 15, 18 e 25
🗺 Cais do Sodré (Cascais line) 🗺 Cais do Sodré
www.fpc.pt



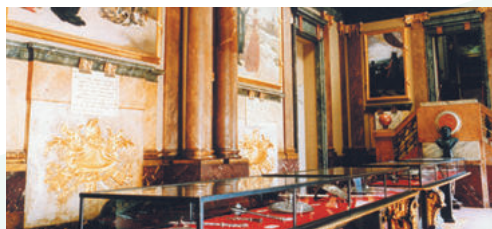
NAVAL MUSEUM LISBOA CARD PARTNER

Among boat models, maritime instruments, impressive replicas and real boats, learn about the History of the Portuguese at Sea.
Praça do Império – Belém, Lisboa | T. (+351) 210 977 371
October to October to April, everyday, 10am- 5pm. May to
September, everyday, 10am-6pm.
Closed: January 1, Easter Sunday, May 1 and December 25.
🚗 714, 727, 28, 729, 751, 201 🚏 15 🗺 Belém (Cascais line)
🚏 Estação Fluvial de Belém (Transtejo)
ccm.marinha.pt/pt/museu



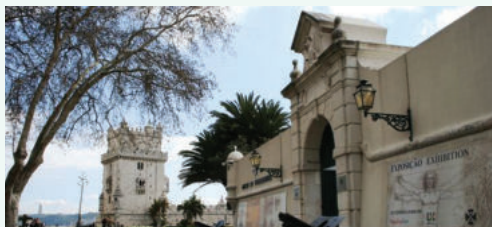
ART, ARCHITECTURE AND TECHNOLOGY MUSEUM LISBOA CARD PARTNER

New museum of the EDP Foundation that presents the relationship between art, architecture and technologies, through contemporary and international programming.
Av. Brasília, Central Tejo, Lisboa | T. (+351) 210 028 130
12am-8pm. Closed: Tuesday, January 1, May 1 and December 25.
🚗 728, 714, 727, 729, 751 🚏 15 🚇 Belém (Cascais line)
www.maat.pt



LISBON MILITARY MUSEUM

Valuable collection of artillery and uniforms.
Largo do Museu de Artilharia, Lisboa | T. (+351) 218 842 569
Tuesday to Sunday, 10am-5pm. Weekend, 10pm-12.30am and
1pm-5pm. Free entry, on the first Sunday morning of each month.
🚗 210, 728, 735
www.exercito.pt



WAR VETERANS MUSEUM - BOM SUCESSO FORT

It integrates the Monument to the Combatants of the Overseas war. Museum and exhibitions.
Forte do Bom Sucesso, Belém | T. (+351) 969 562 064
Daily, 10am-5.30pm (last entry at 5pm). April to September,
10am-6pm (last entry at 5.30pm).
🚗 727, 728, 729, 751 🚏 15 🚇 Belém (Cascais line)
www.ligacombatentes.org.pt



NATIONAL MUSEUM OF ANCIENT ART LISBOA CARD PARTNER

European art including the finest collection of Portuguese art from the Middle Ages to the 19th century. African and Oriental art.
Rua Janelas Verdes, Lisboa | T. (+351) 213 912 800
Tuesday to Sunday, 10am-6pm. Closed: January 1, Easter
Sunday, May 1, June 13, December 24 and 25.
🚗 713,714, 727, 728, 732, 760 🚏 15, 18, 25
www.museudearteantiga.pt



PUPPET MUSEUM

A collection of puppets from around the world. Demonstrations of the techniques of puppet manipulation.
Rua da Esperança, 146, Lisboa | T. (+351) 213 942 810
Tuesday to Sunday, 10am-1pm and 2pm-6pm. Closed: Monday,
January 1, May 1 and December 25.
www.museudamarioneta.pt



NATIONAL COACH MUSEUM LISBOA CARD PARTNER

On May 23, 1905 the "Royal Coach Museum" open in Lisbon and it is the world's first coach museum that occupied the antique Royal Riding School, specifically adapted to receive a unique collection of coaches! On May 23, 2015 the collection moved to a brand new building.
Avenida da Índia, 136, Lisboa | Picadeiro Real: Praça Afonso de Albuquerque, Lisboa | T. (+351) 210 732 319
Tuesday to Sunday, 10am-6pm (Last visit 5.15pm (New Building) y 5.30pm (Royal Riding School). Closed: Monday,
January 1, May 1, Easter Sunday, December 24 and 25. Free on the first Sunday of each month.
www.museudoscoches.pt

MUSEUMS



NATIONAL TILE MUSEUM

LISBOA CARD PARTNER

The art of the tile over the past five centuries housed in a sixteenth century convent.

Rua Madre de Deus, 4, Lisboa | T. (+351) 218 100 340

Tuesday to Sunday, 10am-6pm. Closed: Monday, Easter Sunday, January 1, May 1, June 13 and December 25.

🚶 718, 728, 742, 759, 794

www.museudoazulejo.pt



NATIONAL RAILWAY MUSEUM

Travel from the beginnings of steam locomotives to the railroad of the future, not forgetting national treasures like the Royal Train or the Portuguese Presidential Train.

Rua Eng. Ferreira de Mesquita, 1A Entroncamento

T. (+351) 249 130 382

Tuesday to Sunday, 10am-6pm.

www.fmnf.pt



NATIONAL MUSIC MUSEUM

LISBOA CARD PARTNER

European musical instruments from the past three centuries.

A collection housed in a Metro station concourse.

Rua João Freitas Branco, Lisboa | T. (+351) 217 710 990

Tuesday to Saturday, 10am-6pm. Closed: Sunday, Monday, January 1, May 1, June 13 and December 25.

🚶 Alto dos Moinhos

www.museunacionaldamusica.pt



SÃO ROQUE MUSEUM

LISBOA CARD PARTNER

Paintings, sculpture, jewelry, illuminated manuscripts, fabrics, reliquaries and altar frontals (14th century to 20th century).

Largo Trindade Coelho, Lisboa | T. (+351) 213 235 444/ 382/ 449

Tuesday to Sunday, 10am-6pm. Monday, 2pm-6pm

Closed: Monday morning and holidays.

mais.scmf.pt/museu-saoroque/museu/



NATIONAL MUSEUM OF ETHNOLOGY

LISBOA CARD PARTNER

Collection with a universal range. Agricultural implements.

Av. Ilha da Madeira, Lisboa | T. (+351) 213 041 160

Tuesdays, 2pm-6pm. Wednesday to Sunday, 10am-6pm

Closed: Monday, January 1, May 1, June 13 and December 25.

🚶 728, 732 🚶 Belém, (Cascais line)

www.mnetnologia.wordpress.com



NATIONAL THEATRE AND DANCE MUSEUM

LISBOA CARD PARTNER

Costumes, costume designs, stage sets, photographs and so much more.

Estrada do Lumiar, 10-12, Lisboa | T. (+351) 217 567 410

Tuesday to Sunday, 10am-6pm. Closed: Monday and Public holidays (June 13).

🚶 736, 703, 701, 796 🚶 Lumiar

www.museudoteatroedanca.gov.pt



RTP - VISIBLE RADIO AND TELEVISION MUSEUM COLLECTION

The largest European collection of radio equipment.

Rua Conselheiro Emídio Navarro, 34, Lisbon
T. (+351) 217 947 923 | 217 947 961

Monday to Friday, 10 am to 1 pm and 2 pm to 5 pm. Open on the first Saturday of each month for groups of more than 15 people, subject to availability and prior booking, at least one week in advance, except holidays. Closed on Saturdays, Sundays and holidays. Free visits. Prior registration required for groups.

museu.virtual@rtp.pt
museu.rtp.pt



NATIONAL DRESS MUSEUM

LISBOA CARD PARTNER

Costumes and accessories from the 17th century to the present day and a Botanical Park.

Largo Júlio Castilho, Lisboa | T. (+351) 217 567 620
Tuesday to Sunday, 10am-6pm. Closed: Monday.

🚶 701, 703, 736 📍 Lumiar
www.museudotraje.dgcp.gov.pt



THE ORIENT MUSEUM

LISBOA CARD PARTNER

Av. Brasília, Doca de Alcântara Norte, Lisboa
| T. (+351) 213 585 200

Tuesday to Sunday, 10am-6pm. Friday, 10am-10pm (free entry, 6pm-10pm). Closed on Monday.

www.museudoorientep.pt



NEWSMUSEUM | MEDIA AGE EXPERIENCE

LISBOA CARD PARTNER

Nominated for European Museum of the Year 2017.

An intelligent, interactive and technically advanced entertainment, dedicated to the stories of Portugal and the world as told by the Media. That is how NewsMuseum, located in the Village of Sintra, defines itself.

Rua Visconde Monserrate, 26 a 38, Sintra | T. (+351) 210 126 600
Every day from 10am-6.30pm. Last entry at 5.30pm.

🚶 Sintra (sintra Line)
www.newsmuseum.pt



MUSEUM SPORTING CP - STADIUM JOSÉ DE ALVALADE

LISBOA CARD PARTNER

Come and see the history of one of the biggest and most eclectic clubs in the world of sports.

Rua Professor Fernando da Fonseca, Lisboa
T. (+351) 217 516 164

Tuesday to Sunday, 10:30 am-1pm and 2:30pm-6pm.

📍 Campo Grande | www.sporting.pt



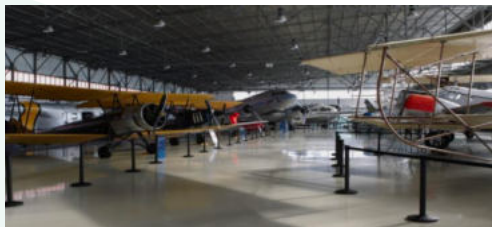
CARRIS MUSEUM

LISBOA CARD PARTNER

Trams, buses and urban public transport equipment.

Rua 1º de Maio, 103, Lisboa

OTHER MUSEUMS



AIR MUSEUM

LISBOA CARD PARTNER

Planes and equipment displayed in a hangar.
Granja do Marquês, Pêro Pinheiro, Sintra



SCIENCE AND NATURAL HISTORY NATIONAL MUSEUM

LISBOA CARD PARTNER

Scientific instruments, collection of natural history.
Rua Escola Politécnica, 54-60, Lisboa

ART GALLERY



ROCA LISBOA GALLERY

We invite you to visit the Roca Lisboa Gallery and discover the latest innovations in bathroom spaces, as well as the sensations that surround them. A space open to the city, with events and cultural activities.

Praça dos Restauradores, 46, Lisboa | T. (+351) 213 404 260
Monday to Friday, 10:30 am to 17:30 pm.
rocalisboagallery.com

FOOTBALL STADIUMS



TOUR ON THE STADIUM

JOSÉ ALVALADE SPORTING CP

LISBOA CARD PARTNER

Come and see the stadium of one of the biggest and most eclectic clubs in the world of sports.

Rua Professor Fernando da Fonseca, Lisboa
T. (+351) 217 516 164

Tuesday to Sunday, 11.30am, 2.30pm, 3.30pm; 4.30pm.

🚗 Campo Grande

www.sporting.pt



TOUR ON THE LUZ STADIUM

LISBOA CARD PARTNER

Visit the Estádio do Sport Lisboa e Benfica and experience the stadium on the day of play.

Av. Eusébio da Silva Ferreira, Lisboa | T. (+351) 217 219 500
Every day, 10am-7pm.

🚗 3, 64, 729, 750, 765, 767, 799

📍 Colégio Militar/Alto dos Moinhos

www.slbenfica.pt

visitasestadio@slbenfica.pt



VASCO DA GAMA AQUARIUM

LISBOA CARD PARTNER

Visit one of the oldest museum-aquariums in the world and travel between the depths of the sea and the maritime slopes, contemplating Portuguese aquatic life.

Rua Direita do Dafundo, Cruz Quebrada – Dafundo

T. (+351) 214 205 000

Everyday, 10am-18pm (last entry at 5:30pm).

🚗 76,723,729,750,751 (Carris); 1,6 (Vimeca) 🚏 15

aquariovgama@marinha.pt
marinha.pt/pt/aquariovgama



CENTRO INTERPRETATIVO DA HISTÓRIA DO BACALHAU

LISBOA CARD PARTNER

One of the most epic Portuguese stories is told here – the discovery of Terra Nova and the adventure in the frozen seas in search for codfish.

Torreão Nascente do Terreiro do Paço, Lisboa

T. (+351) 211 126 155

Every day, 10am-7pm (last entry 6pm).

www.historiabacalhau.pt



CASINO ESTORIL

The largest casino in Europe. Gaming rooms, open all day from 3pm to 3am, shows from 9pm.

Praça José Teodoro dos Santos, Estoril | T. (+351) 214 667 700

Estoril 🚏 (Cascais line)

www.casino-estoril.pt



CENTRO INTERATIVO

MITOS E LENDAS DE SINTRA

LISBOA CARD PARTNER

Discover the mysticism, secrets and romanticism of Sintra on a journey that reveals the town's history, music and literature, through multimedia technology and sensory experiences.

Praça da República, 23, Sintra | T. (+351) 219 231 157

Every day from 10am to 6.30pm, last entry at 5.30pm.

🚏 Sintra (sintra Line)

www.visittlisboa.com



CASINO LISBOA

Gaming rooms and shows from 3pm to 3am.

Alameda dos Oceanos, Lt. 1.03.01

Parque das Nações, Lisboa | T. (+351) 218 929 000

3pm-3am. Friday and Saturday, 4pm-4am.

🚏 Oriente

www.casinolisboa.pt



TEJO CENTER

A journey of interpretation, appreciation and environmental awareness of the two banks of the Tejo.

Terreiro do Paço | T. (+351) 211 163 426

Every day from 10am to 7pm.

centrotejo@lismarketing.pt

CULTURE AND LEISURE



STATION SUL E SUESTE

Live the experience of a river cruise aboard one of the many traditional boats. Embark and discover the Tejo and its banks.
Terreiro do Paço

Every day from 9am to 8pm.
centrotejo@lismarketing.pt



HOT CLUBE DE PORTUGAL

The Hot Clube is one of the oldest jazz clubs in Europe and considered one of the top 100 jazz clubs in the world.

Praça da Alegria, 48, Lisboa | T. (+351) 213 619 740
Tuesday to Saturday, 10pm-2am.
www.hcp.pt

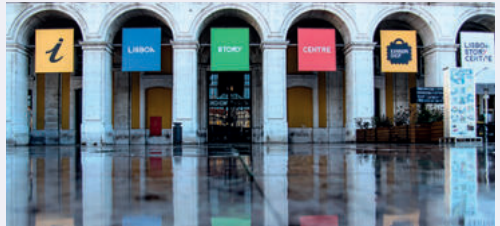


BRIDGE EXPERIENCE

LISBOA CARD PARTNER

An interactive and immersive experience that allows a unique discovery of the Ponte 25 de Abril.

Avenida da Índia, Alcântara
Every day, 10am to 6pm. Last entry at 5pm.
Closed on December 25.
www.visitlisboa.com



LISBOA STORY CENTRE

LISBOA CARD PARTNER

Interpretive centre dedicated to stories about the Portuguese capital city told through immersion experiences.

Terreiro do Paço, 78-81, Lisboa | T. (+351) 21 194 10 99
Every day from 10am to 7pm (last entry 6pm).
www.lisboastorycentre.pt



CHAPITÔ

Costa do Castelo, 7, Lisboa | T. (+351) 218 855 550
Tuesdays to Sundays, midnight-2am.

737 28 Rossio
www.chapito.org



ESCAPE GAME OVER LISBOA

There are three rooms for an interactive experience, with clues to follow and a truth to discover.

Rua de O Século, 4B, Lisboa | T. (+351) 926 871 858
From Monday to Friday, 3am -12am. Saturdays and Sundays,
10:30am-12am.

info@escapegameover.pt
www.escapegameover.pt



LISBON ESCAPE HUNT

Imagine a seemingly normal room. Now imagine you and your friends locked inside that room.

Rua dos Douradores, 16, Lisboa | T. (+351) 924 149 160
Every day, 11am-9pm.

www.lisbon.escapehunt.com



MARVEL MISSION

Welcome to the entertainment center based on the fantastic Marvel Universe. Here you can help superheroes through different missions and purchase collectible products and sculptures.

Av. Cruzeiro Seixas, 5 e 7, Amadora
T. (+351) 218 003 600

info@marvelmission.com

www.marvelmission.com



MINI GOLF LISBON

Join us on our 18 hole course that is lit with both natural and UV Neon light and is packed full of challenges, twists and turns, promising lots of fun for everyone. You can also get competitive on our pool tables, football and air hockey tables, or simply sit back and relax in our bar area.

Calçada Ferragial, 8, Lisboa | T. (+351) 926 674 272
Every day, 12:30 am to 11 pm (last entry: 10:30 pm).

Closed on 25th December and 1st January.

golf@minigolflisbon.com

minigolflisbon.com



LISBOA OCEANARIUM

LISBOA CARD PARTNER

One of the biggest aquariums in Europe. Open every day.

Esplanada D. Carlos I, Lisboa | T. (+351) 218 917 000

Prices: Permanent + Temporary Exhibition / Permanent Exhibition - children (0 to 3 years old): 12€/10€; adults (13 to 64 years old): 18€/15€; over 65 years old: 10€/12€; families (2 adults and children under 12 years old): 47€/39€.

Every day, 10am-8pm (last entry at 7pm).

☎ 705, 725, 728, 744, 708, 750, 759, 782, 794

📍 Oriente

www.oceanario.pt



QUAKE

A thematic experience that allows to see and feel the Great Lisbon Earthquake.

Rua Cais da Alfândega Velha, 39, Lisboa
general@lisbonquake.com

info@lisbonquake.com



PAVILION OF KNOWLEDGE

LISBOA CARD PARTNER

José Mariano Gago, Parque das Nações, Lisboa

T. (+351) 218 917 100

Price: 9€; children (3-11 years): 6€; children (12-17 years): 7€; family: 24€.

Tuesday to Friday, 10am-6pm. Saturday, Sunday and Bank Holidays, 11am-7pm.

📍 Oriente

www.pavconhecimento.pt

CULTURE AND LEISURE



NAVY PLANETARIUM

LISBOA CARD PARTNER

Get closer to the sky and feel like an astronaut among the stars. Get to understand what's going on beyond what the eyes can see, in what is one of the largest planetariums in the world.

Praça do Império – Belém, Lisboa | T. (+351) 210 977 350
From Tuesday to Sunday, 09:30-12pm | 1:30pm-4pm. Saturday from 1:30pm-4pm.

Closed: January 1, Easter Sunday, May 1 and December 25.

☎ 714, 727, 728, 729,751, 201 🚏 15

🚆 Belém(Cascais line) 🚶 Estação Fluvial de Belém (Transtejo)
planetario@marinha.pt
ccm.marinha.pt/planetario



D. MARIA II NATIONAL THEATER

Praça D. Pedro V, Lisboa | T. (+351) 213 250 800

geral@tndm.pt

www.tndm.pt



NATIONAL THEATER OF SÃO CARLOS

Rua Serpa Pinto, 9, Lisboa | T. (+351) 213 253 000

saocarlos.info@saocarlos.pt



ADVENTURE PARK

Canopy is an activity that consists of sequentially passing through obstacles between platforms which are positioned on the tops of the trees always ending with a slide.

Complexo Desportivo do Jamor, Estrada

Carreira de Tiro | T. (+351) 211 519 400

Every day: 10am-17pm.

Closed on December 25, January 1 and Easter Sunday.

Reservations are not mandatory, but are recommended.

www.adventurepark.pt



BADOCA SAFARI PARK

About 500 wild animals live in this theme park.

Herdade da Badoca, Vila Nova de Santo André

T. (+351) 369 708 850

Every day, 9:30am-5:30am.

badoca@badoca.com

www.badoca.com



BIRD WATCHING AND VISITOR CENTRE

LISBOA CARD PARTNER

More than 100 species of wild birds. Guided tours and birdwatching.

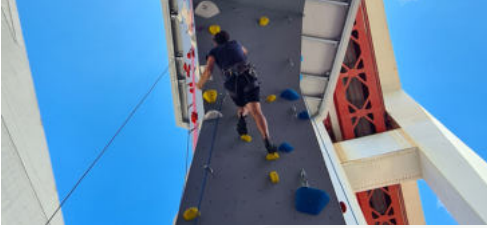
Lezíria Sul de Vila Franca de Xira, Vila Franca de Xira

T. (+351) 926 458 963

Open every day, except Monday and July.

🚆 Vila Franca de Xira

www.evoca.pt



ESCALA25

This incredible location provides a unique climbing experience where visitors can engage with the Capital's iconic Ponte 25 de abril bridge in a new and exciting way. A safe and welcoming space for all ages and abilities. Come climb with us!

Av. da Índia, Pilar 7, Lisboa | T. (+351) 964 129 244
 Monday to Friday, 10 am to 8 pm.
 Weenkend, 10 am to 6 pm.
escala25.com



MONTE SELVAGEM

Preservation of the wild life on a montado (typical ecosystem of the Alentejo region). Home to both domestic and wild animals.

Monte do Azinhal, Lavre, Montemor-o-Novo
 T. (+351) 265 894 377
 Tuesdays to Sundays, 10am-7pm, until October.
www.monteselvagem.pt

9.8 GRAVITY CLIMBING LISBON

Av. Severiano Falcão, 3B, Prior Velho
 T. (+351) 219 413 900
info@98gravity.pt
www.98gravity.pt



COVA DA BALEIA ADVENTURE PARK

Adventure Park with 55.000m², 35 kilometers from Lisbon, in Mafra, dedicated to Adventure, Passion, Challenge and Emotion. Paintball, Canopy, Slide, Rappel, Pool, Inflatables.

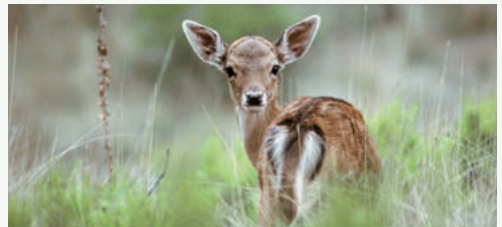
Senhora da Lapa, Barreiralva, Mafra | T. (+351) 969 008 368
 Every day, 10am-7pm.
www.covadabaleia.com



MARINA PARQUE DAS NAÇÕES

Sailing, canoeing and windsurfing experiences as well as river cruises.

Edf. da Capitania, Passeio de Neptuno, Lisboa
 T. (+351) 218 949 066
 Locks from 8.30am to 20.30pm.
www.marinaparquedasnacoes.pt



MAFRA NATIONAL WILD LIFE PARK

A former royal hunting reserve. 800 walled hectares. 35 kilometers from Lisboa, adjoining the Mafra Monastery, Portão do Codeçal.

T. (+351) 261 817 050
 Daily walks at 9.30am and 2pm.
www.tapadademafra.pt

OUTDOOR AND NATURAL PARKS



WIND – CENTRO DE ATIVIDADES DE MONTANHA

Rua Eduardo Mondlane, loja 44, Baixa da Banheira
T. (+351) 210 848 878
geral@wind-cam.pt
www.wind-cam.pt



LISBOA ZOO

LISBOA CARD PARTNER

Dolphin Bay, Rainbow Park, Reptile House, Children's Farm and Birds and Reptiles Presentation.

Estrada de Benfica, 158/160, Lisboa
T. (+351) 217 232 910 / 900

April to September, 10am-8pm. October to March, 10am-6pm.

🚗 716, 731, 754, 758, 701, 726, 755 e 768

📍 Jardim Zoológico 🚏 Sete-rios

www.zoo.pt



MALO CLINIC - FROM SCIENCE TO SMILE

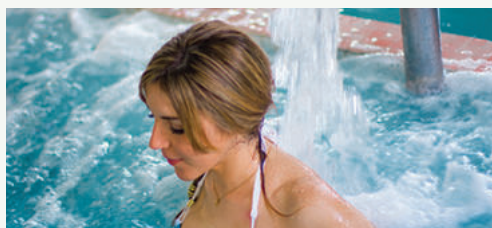
Innovation in dentistry.

Av. dos Combatentes, 43A, 13.º, Lisboa

T. (+351) 217 228 100

Monday to Friday, 8am-7pm.

www.maloclinics.com



THALASSO CAPARICA TALASSOTHERAPY

Therapies of seawater, osteopathy, massages, spine treatment and aesthetic.

Av. 1.º de Maio, 25 A, Costa da Caparica | T. (+351) 212 905 655 / 916 189 585

Monday to Saturday (including holidays), 10am-8pm

Closed on Sunday

www.thalassocaparica.com

HEALTH & WELLNESS

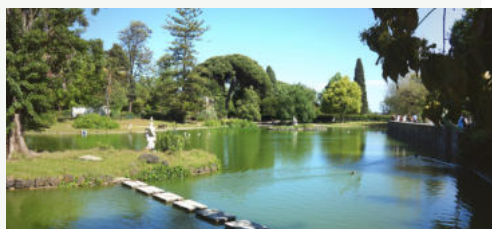


ELOHIM SPA

At ELOHIM SPA, you will have an unforgettable experience. Elohim offers massages, reflexology, osteopathy, exfoliation and spiritual therapies.

Largo do Rato, 3, 1.º, Lisboa | T. (+351) 213 860 708

www.elohim.pt



EDUARDO VII PARK AND GREENHOUSE

LISBOA CARD PARTNER

Spacious formal gardens, streams and paths.

Parque Eduardo VII, Lisboa | T. (+351) 213 882 278

October to March, 9am-4.30pm. April to September, 9am-5.30pm.

🚗 702, 712, 720, 722, 731, 738, 744, 746, 749

📍 Marquês Pombal, Parque, S. Sebastião

OTHERS



PANDA BINGO

Av. de Paris, 5 A, Lisboa | T. (+351) 218 486 521

Free Entry. Cards for €1, 2 and 3. 2575 places. Daily, 3pm-3am.

 Areiro



PARQUE DAS NAÇÕES CABLE CAR

LISBOA CARD PARTNER

Open from december 3rd. Opening times detailed on website.

Tickets (one way singles): Adults - 6,50€

Children (<3 years) - Free entry

Children (4-12 years) - 4,50€

www.telecabinelisboa.pt



Fado

INTANGIBLE HERITAGE OF HUMANITY



PATRIMÓNIO DA
HUMANIDADE
FADO
HERITAGE OF
HUMANITY

The song of Lisboa and the World

Classified as Intangible Cultural Heritage of Humanity by UNESCO since November 2011, Fado is the purest expression of Lisboa's "soul". Much more than just a song, Fado is a musical manifestation of feeling Portuguese and a city's way of life, always accompanied by the solemn and melancholy chords of the Portuguese guitar.

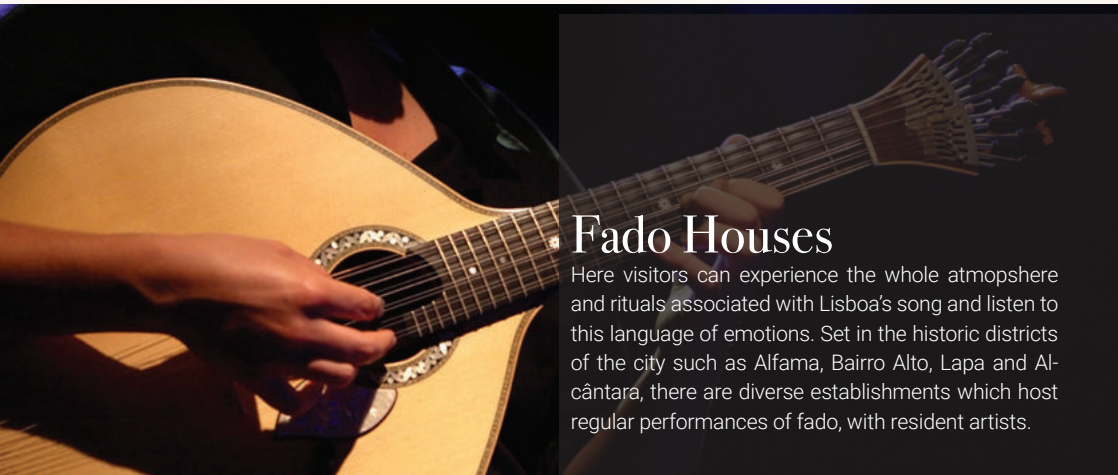
Considered a brand inseparable from the culture and tradition of the Portuguese capital, Fado has been for at least two centuries, part of the city's heritage that endowed it with soul and voice. But since influences from overseas, and from various cultures

which arrived in Lisboa can also be heard in Fado, Lisboa's song is now deservedly a shared heritage with the world. Inspired from a simple and sentimental language, Fado's universal character surpasses all barriers and is now enjoyed by millions of fans worldwide. This internationalization of Fado is greatly due to the charisma and the voice of Amalia Rodrigues, the most renowned fado singer of all time, who from the 1950's took Lisboa's song to the most prestigious venues, from Russia to Japan. More recently, a new generation of singers of this genre has given the

song a new vitality, placing it in the circuits of World Music.

The ultimate international recognition of Fado comes with UNESCO's highest recognition, whose award of the Intangible Heritage of Humanity title makes this a perfect example of how a centuries-old tradition of a city becomes the identity symbol of a people. Therefore, whenever the lights are dimmed in a fado house and someone says "Silence, Fado is about to be sung", this is not just a ritual that is being performed. It is, as Amália Rodrigues would say, "a strange form of life" that is being renewed.





Fado Houses

Here visitors can experience the whole atmosphere and rituals associated with Lisboa's song and listen to this language of emotions. Set in the historic districts of the city such as Alfama, Bairro Alto, Lapa and Alcântara, there are diverse establishments which host regular performances of fado, with resident artists.



ADEGA MACHADO

The renovated Adegamachado, in Bairro Alto, keeps secrets in its songs. Fado and food à la carte in the main hall. Wine and snacks in the Fado hall (room -1).

Rua do Norte, 91, Lisboa | T. (+351) 213 422 282
adegamachado@adegamachado.pt
www.adegamachado.pt



CAFÉ LUSO

Café Luso is one of the most prestigious fado houses in Portugal. Founded in 1927. Shows every night.

Travessa da Queimada, 10, Lisboa | T. (+351) 213 422 281
www.cafeluso.pt

CASA DE LINHARES

Beco dos Armazéns de Linho, 2, Lisboa | T. (+351) 910 188 118
info@casadelinhares.com
www.casadelinhares.pt

ASSOCIAÇÃO DO FADO CASTO

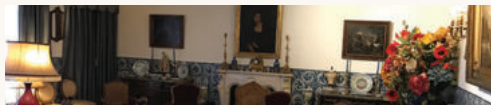
Rua de São Mamede, 8 A, Lisboa | T. (+351) 917 029 436
mesadefrades@gmail.com
www.likeandfollow.pt



A SEVERA

Opened in 1955, the name of this fado house pays homage to "Maria Severa," a gypsy singer who, in the 19th century was the most famous Fado performer. Fado is sung here from Thursday to Tuesday, from 9.00pm.

Rua das Gáveas, 51-61, Lisboa | T. (+351) 213 428 314
info@asevera.com
www.asevera.com



AMÁLIA RODRIGUES MUSEUM-RESIDENCE

LISBOA CARD PARTNER

The house where Fado's greatest icon lived for over half a century.

Rua de São Bento, 193, Lisboa | T. (+351) 213 971 896
Tuesday to Sunday, 10am-6pm
706, 727
secretariado@amaliarodrigues.pt
www.amaliarodrigues.pt



CLUBE DE FADO

On entering Clube de Fado you will be able to listen to a prestigious cast of Fado singers accompanied by the Portuguese guitar, every night from 9.30pm.

Rua S. João da Praça, 86-94, Lisboa | T. (+351) 218 852 704
clubedefado@fadoandfood.pt
www.clube-de-fado.com



FADO MUSEUM

LISBOA CARD PARTNER

Everything about Fado and the Portuguese guitar.

Largo do Chafariz de Dentro, Lisboa | T. (+351) 218 823 470
10am-6pm (last entry at 5.30pm). Closed: Monday, January 1, May 1 and December 25
🚶 208, 728, 735, 759, 794
www.museudofado.pt

RESTAURANTE FAMA DE ALFAMA

Rua do Terreiro do Trigo, 80, Lisboa
T. (+351) 218 862 608
famadealfama@gmail.com



O FORCADO

With over 30 years of existence, this house is honored to have the great fado singer Amália as its patron. This space offers Lisboa and Coimbra Fado, as well as folk songs every night from 8pm.

Rua da Rosa, 221, Lisboa | T. (+351) 213 468 579
restaurante.oforcado@gmail.com
www.oforcado.com

MARIA DA MOURARIA

Where the sound of the Portuguese Guitar and voices can be heard every night. Open from Tuesday to Sunday, from 8pm to 2am. Fado from 8pm.

Largo da Severa, 2, Lisboa | T. (+351) 218 860 165 / (+351) 964 766 056
mariadamouraria@gmail.com
www.mariadamouraria.pt



MESA DE FRADES

Rua dos Remédios, 139, Lisboa | T. (+351) 917 029 436
mesadefrades@gmail.com
www.likeandfollow.pt

O FAIA

Faia promises an unforgettable evening can listen to the words of great poets and classical themes of Fado to the sound of the guitar, Monday to Saturday from 9.30pm.

Rua da Barroca, 56, Lisboa | T. (+351) 213 426 742
www.ofaia.com

SPECIAL FADO



PARREIRINHA DE ALFAMA

Is one of the oldest and most famous Fado restaurants of Lisbon, in one of the most typical neighborhoods. It was founded by Argentina Santos.

Beco do Espírito Santo, 1, Lisboa | T. (+351) 218 868 209

info@parreirinhadealfama.com

www.parreirinhadealfama.com



SÃO MIGUEL D'ALFAMA

Rua de São Miguel, 9,11,15 e 17, Lisboa

T. (+351) 960 191 881

info@saomiguelfalfama.pt; saomiguelfalfama@sapo.pt

www.saomiguelfalfama.com



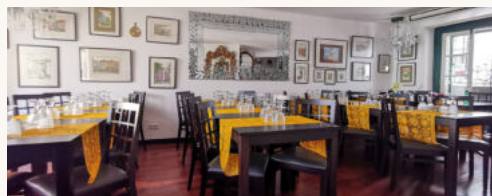
PÁTEO DE ALFAMA

Leaning against the first wall of the city (Cerca Velha), Pátéo de Alfama is a must for all visitors to the city who wish to experience a unique evening to the sound of Fado.

Rua São João Praça, 18, Lisboa | T. (+351) 215 873 415

booking@pateodealfama.pt

www.pateodealfama.com



SÃO MIGUEL GRANDES CANTORIAS

Largo de São Miguel, 1-2, Lisboa

T. (+351) 960 191 881

info@saomiguelgrandescantorias.com;

www.saomiguelgrandescantorias.com



PORTA D'ALFAMA

Rua de São João da Praça,17-17 A, Lisboa

tininhalfama@live.com.pt



TAVERNA D'EL REY

With its wooden ceilings reminiscent of the caravels and its Portuguese cobblestone floors, Taverna d'El Rey is filled with Lisboa traditions. Here Fado shows are held every evening from 6pm to 3am.

Largo do Chafariz de Dentro, 15, Lisboa | T. (+351) 218 876 754

www.tavernadelrey.com



SR. VINHO

Equally refined and traditional, a visit to Sr. Vinho promises an unforgettable evening, which will of course include a session of fado, from 9.30pm.

Rua do Meio à Lapa, 18, Lisboa | T. (+351) 213 972 681

www.srvinho.com

SHOWS



FADO IN CHIADO LISBOA CARD PARTNER

In the show "Fado in Chiado" talented singers perform Fado and the music that makes it a national song.

Cine Teatro Gymnasio. Rua da Misericórdia, 14, 2.ª, Lisboa
T. (+351) 961 717 778
Monday to Saturday at 7pm
www.fadoinchiado.com



FADO MIUDINHO

To delight children and adults, the fado is transformed to the measure of the seas and fills the stage in front of the center aquarium of the Oceanarium. Reservation required.

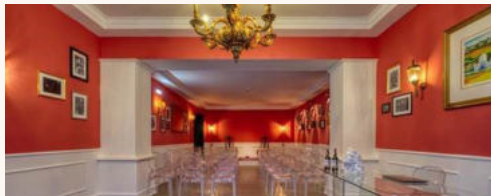
Oceanário de Lisboa, Parque das Nações
T. (+351) 218 917 002/06
First and third Sunday of the month, 9am
reservas@oceanario.pt



FADOS FORA DE PORTAS

Fados Fora de Portas brings Fado to your event in Lisboa or anywhere in the country. At corporate or private events, Fado will bring a touch of tradition and Portugueseness.

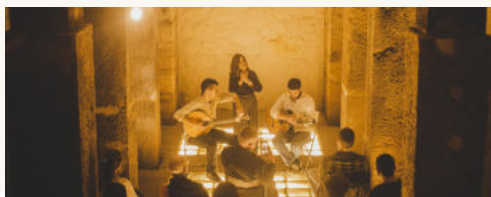
T. (+351) 91 881 88 40
info@fadosforadeportas.pt
www.fadosforadeportas.pt



LISBOA EM FADO

Every day at 6 pm, a memorable show with four fantastic artists who express the Portuguese soul through our song: FADO.

Rua do Crucifixo, 82-84, Lisboa | T. (+351) 911 777 388
lisboaemfado@gmail.com
www.lisboaemfado.pt



REAL FADO

Real Fado presents Authentic Fado concerts in amazing places in the city of Lisboa.

T. (+351) 91 881 88 40
realfadoconcerts@gmail.com
www.realfadoconcerts.com



TASTING FADO

A 60 minutes experience that includes a tour of the theater (national monument), a Fado exhibition, a Fado concert, a Port and a custard pastry.

Avenida da Liberdade, 182 A, Lisboa
T. (+351) 962 298 377
Wednesday to Saturday, 7pm
tastingfado@uau.pt
www.uau.pt

RESTAURANTS

CITY CENTRE AND HISTORICAL QUARTERS

ALMA

Portuguese signature cuisine
Rua Anchieta, 15, Lisboa
T. (+351) 213 470 650
Lunch, 12:30pm-3:30pm. Dinner,
7pm-11pm. Closed: Monday
alma@almalisboa.pt
www.almalisboa.pt

BAIRRO DO AVILLEZ

Taberna: Snacks and small dishes;
portuguese flavors reinvented;
Páteo: Fish, seafood and portuguese
flavors; Mini Bar: Creative cuisine and
gastronomic bar; Pizzaria Lisboa:
Mediterranean;
Rua Nova da Trindade, 18, Lisboa
T. (+351) 210 998 320
Open every day
Online reservations: bairrodoavillez.pt

BELCANTO

Revisited portuguese cuisine
Rua Serpa Pinto, 10 A, Lisboa
T. (+351) 213 420 607
Lunch: 12:30 - 15:00
Dinner: 19:00 - 23:00
Closed on Sundays and Mondays
Online reservations: belcanto.pt

CAFÉ MARTINHO DA ARCADEA

Portuguese and international cooking
Praça do Comércio, 3, Lisboa
T. (+351) 218 879 259
Closed on Sunday
www.martinhodaarcada.pt

CAFÉ PLAZA

Light meals
Travessa do Salitre, 7, Lisboa
T. (+351) 213 218 218
Every day, 12 pm-10pm
plaza.hotels@heritage.pt
www.heritage.pt

CAN THE CAN

Mediterranean cuisine
Terreiro do Paço, 82-83, Lisboa
T. (+351) 914 007 100
Every day, 9am-12am
www.canthecanlisboa.com

CANTINHO DO AVILLEZ

Portuguese cuisine influenced by chef
José Avillez's travels abroad
Rua dos Duques de Bragança, 7, Lisboa
T. (+351) 211 992 369
Open every day: 12:30 - 15:00
and 19:00 - 00:00
Online reservations: cantinhodoavillez.pt

CERVEJARIA RIBADOURO

Portuguese cuisine
Av. da Liberdade, 155, Lisboa
T. (+351) 213 549 411
Midnight-01.30am
www.cervejariaribadouro.pt

CERVEJARIA TRINDADE

Portuguese cuisine
Rua Nova da Trindade, 20-20D, Lisboa
T. (+351) 213 423 506
Noon-Midnight
www.cervejariatrindade.pt

CHIADO TERRASSE

Mediterranean food
Rua da Trindade, 28, Lisboa
T. (+351) 913 271 977
gallassa.chiado@gmail.com

NOTE - CERVEJARIA MODERNA

Rua Barata Salgueiro, 37 A, Lisboa
T. (+351) 216 027 858
dote@dote.pt
www.dote.pt

ENCANTO

Vegetarian haute cuisine
Largo de São Carlos, 10, Lisboa
T. (+351) 211 626 310
Dinner: 7 pm - 10:30 pm
Closed on Sundays and Mondays
Online reservations:
encantojoseavillez.pt

ESTÓRIAS NA CASA DA COMIDA

Portuguese cuisine
Travessa das Amoreiras, 1, Lisboa
T. (+351) 213 860 889
Closed: Sunday, Saturday and Monday
at lunchtime. Tuesday to Friday, lunch,
1pm-3pm, Monday to Saturday, dinner,
8pm-noon
comercial@casadacomida.pt
www.casadacomida.pt

GALLASSA CAFÉ

Rua da Trindade, 36 B, Lisboa
T. (+351) 913 271 977
gallassa.chiado@gmail.com

GAMBRINUS

Portuguese cuisine
Rua das Portas de Santo Antão, 25,
Lisboa
T. (+351) 213 421 466
Noon-1.30am
info@gambriuslisboa.com
www.gambriuslisboa.com

GUILTY

Rua Barata Salgueiro, 28, Lisboa
T. (+351) 211 913 590
Monday to Wednesday, 12pm-
-midnight. Thursday to Saturday,
Noon-4am. Sunday, noon-midnight
events@olivier.pt
www.guilty.olivier.pt

JNCQUOI

Av. da Liberdade, 182-184, Lisboa
T. (+351) 213 145 397
info@jncquoi.com
www.jncquoi.com

K.O.B.

Rua do Salitre, 139, Lisboa
T. (+351) 934 000 949
Monday to Friday, noon-3pm,
8pm-1am. Saturday, 8pm-1am.
Sunday, 8pm-11pm
events@olivier.pt
www.kob.olivier.pt

LA BRASSERIE DE L'ENTRECOTE

Rua do Alecrim, 117-121, Lisboa
T. (+351) 213 473 616
Lunch, 12.30am-3pm.
Dinner, 7.30pm-midnight
www.brasserieentrecote.pt

LISBOA À NOITE

Portuguese cuisine
Rua das Gáveas, 69, Lisboa
T. (+351) 213 468 557
Closed on Sundays.
Lunches only with prior booking
www.lisboanoite.com

MARISQUEIRA AZUL

Terreiro do Paço, 70, Lisboa
T. (+351) 218 863 065
www.marisqueirazul.pt

MAXIME RESTAURANTE

Gastronomic experience; dinner shows; cabaret, comedy, burlesque. Praça da Alegria, 58, Lisboa T. (+351) 218 716 600
Dinners: from Wednesday to Saturday, from 5:00 pm to 23:00 pm; Bar: Sunday to Tuesday, from 4:00 pm to 11:30 pm and from Wednesday to Saturday, from 5:00 pm to 00:30 am
esperaporti@maximerestaurante.com
www.maximerestaurantel Lisboa.com/

MERCANTINA

Italian cuisine
Rua da Misericórdia, 114, Lisboa T. (+351) 231 070 013/917 243 933
Monday to Thursday, 12pm-3:30pm, 7pm-11:30pm. Friday, 12pm-3:30pm, 7pm-12am. Saturday, 12:30pm-3:30pm, 7pm-12am. Sunday, 12:30pm-3:30pm, 7pm-11:30pm.
geral@mercantina.pt
www.mercantina.pt

MINISTERIUM

Portuguese cuisine
Terreiro do Paço, Ala Nascente, 72-73, Lisboa T. (+351) 218 888 454 / 916 378 555
Monday to Sunday, 10am-11pm.
comercial@ministerium.pt
www.ministerium.pt

MUSEU DA CERVEJA

Portuguese cuisine
Enjoy the best that Portuguese cuisine has to offer. Visit the museum and embark on an adventure through the history of beer!
Terreiro do Paço, 62-65, Lisboa T. (+351) 210 987 656
Todos os dias, 12:00-00:00
info@museudacerveja.pt
www.museudacerveja.pt

NOORI SUSHI

Armazéns do Chiado, Rua Crucifixo, 87, Lisboa T. (+351) 918 639 287
geral@noori.pt
www.noori.pt

NOSOLO ITÁLIA PRAÇA

DO COMÉRCIO
International cuisine
Terreiro do Paço, Ala Nascente, 74/77, Lisboa T. (+351) 218 873 226
Every day, 10am-1am
lisboa.pcomercio@nosoloitalia.com
www.nosoloitalia.com

OPEN BRASSERIE MEDITERRÂNICA

Mediterranean cuisine
Rua de Santa Marta, 48, Lisboa T. (+351) 210 440 900
Monday to Friday (lunch 12.30pm-2.30pm, except holidays), all nights (dinner 7.30pm-10.30pm)
rececao.ismh@inspirahotels.com
www.inspirahotels.com

PALÁCIO CHIADO

Portuguese and international cuisine
Rua do Alecrim, 70, Lisboa T. (+351) 210 101 184
Sunday to Thursday: 12pm-12am
Fridays and Saturdays: 12pm-2am
www.palaciochiado.pt
geral@palaciochiado.pt

REAL COZINHA

Portuguese traditional food.
Rua Tomás Ribeiro, 115, Lisboa T. (+351) 213 199 500
Every day, from 12:30 pm to 03:30 pm and from 07:30 pm to 10:30 pm; Sunday brunch, from 12:30 pm to 4:00 pm.
rpl@realhotelsgroup.com
www.realpalacio.realhotelsgroup.com/restaurant-lisbon/real-cozinha-restaurant-bar/

TERRA NOVA BY POPULI

International food
Ala Nascente, Terreiro do Paço, 85-86, Lisboa T. (+351) 218 877 395
Monday to Sunday, lunch, 12.30pm-3pm. Sunday to Wednesday, dinner, 7.30pm-23pm. Thursday to Saturday, 7.30pm-midnight. Sunday, brunch, 11.30am-2.30pm
geral@terranovabypopuli.pt
www.terranovabypopuli.pt

RESTAURANTE A TRAVESSA DO FADO

Largo do Chafariz de Dentro, 1, Lisboa T. (+351) 218 870 144
geral@atravessadofado.com

RESTAURANTE AZUL E BRANCO

Mediterranean food
Av. Duque de Loulé, 81-83, Lisboa T. (+351) 213 182 000
Every day, 7pm-10:30pm
sales.hdl@h10hotels.com
www.hotelh10duquedeloule.com

RESTAURANTE DOIS ARCOS

Portuguese cuisine
Rua dos Douradores, 163, Lisboa T. (+351) 218 879 689
12pm-10pm. Closed on Sunday
cides.lopes@gmail.com

RESTAURANTE GRANJA VELHA

Portuguese cuisine
Rua dos Douradores, 200, Lisboa T. (+351) 218 873 891
12pm-3pm, 7pm-10pm.
Closed on Sunday
www.granjavelha.com

RESTAURANTE OS TIBETANOS

Rua do Salitre, 117, Lisboa
Saturday: 12.45pm-3pm/ 8pm-11pm.
Sunday: 12.45pm-3pm/7.30pm-10.30pm
info@tibetanos.com
www.tibetanos.com

RESTAURANTE VARANDA DE LISBOA

Portuguese cuisine
Hotel Mundial, Praça Martim Moniz, 2, Lisboa T. (+351) 218 842 000
Winter, 7.30pm-10pm. Summer, 7.30pm-10.30pm
www.varandadelisboa.pt

RESTAURANTE VEGETARIANO PSI

Alameda Santo António dos Capuchos, Campo Mártires da Pátria, Lisboa T. (+351) 213 590 573
Monday to Saturday, 12.30pm-3.30pm and 7.30pm-10.30pm. Closed on Sunday
psiveg@gmail.com
www.restaurantepsi.com

RESTAURANTS

RIB BEEF & WINE

Steakhouse

Praça do Comércio, 31-34, Lisboa

T. (+351) 968 578 962

Sunday to Thursday, 12:30pm-3pm;
7:30pm-10:30pm. Friday and Saturday,
12:30pm-3pm; 7:30pm-11pm
restaurante.pousadalisboa@pestana.com

www.pousadas.pt/pt/hotel/pousada-lisboa

SELLVA

Rua Mouzinho da Silveira, 32, Lisboa

T. (+351) 215 998 814

comercial@grupocpa.pt

www.sellva.pt

SILK CLUB

Restaurante, Bar, Club

Traditional Japanese Cuisine

Rua da Misericórdia, 14, Lisboa

T. (+351) 913 009 193

Tuesday to Saturday, from 7pm
events@silk-club.com

www.silk-club.com

SOLAR DOS PRESUNTOS

Rua Portas de Santo Antão,
150, Lisboa

T. (+351) 213 424 253

restaurante@solarospresuntos.com

www.solarospresuntos.com

THE DECADENTE RESTAURANTE & BAR

Local, uncomplicated food and
drinks, sustainable practices and a
comfortable environment. Grill, raw
bar and signature cocktails.

Doca S. Pedro de Alcântara, 81,
Lisboa

T. (+351) 213 461 381

From Sunday to Thursday, from 7 pm
to 11 pm and from Friday to Saturday,
from 7 pm to 12 am

geral@thedecadente.pt

www.thedecadente.pt

ZAMBEZE

Regional cuisine and African cuisine

Calçada Marquês de Tancos, Lisboa

T. (+351) 218 877 056

Every day, 10am-11pm

www.zambezorestaurante.pt

FROM PRAÇA DO COMÉRCIO TO BELÉM

A TRAVESSA

Portuguese cuisine

Travessa do Convento das Bernardas,
12, Lisboa

T. (+351) 213 902 034

Closed: Sunday, Monday and Saturday
at lunch time

www.atraversa.com

CAFÉ IN

Portuguese and international cuisine

Av. Brasília, 311, Lisboa

T. (+351) 213 626 248

12pm-4pm and 8pm-12am. Terrace
área, 10am-03.10am

www.cafein.pt

DOCA DE SANTO

Armazém CP, Doca de Santo Amaro,
Lisboa

T. (+351) 213 963 535

comercial@grupocpa.pt

www.docadesanto.com.pt

ESPAÇO ESPELHO D'ÁGUA

Portuguese, Brazilian, African
and Asian cuisine

Av. Brasília, S/N, Belém, Lisboa

T. (+351) 213 010 510

Sunday to Thursday, 11am-12pm.

Friday to Saturday, 11am-1am

info@espacoesselhodeagua.com

www.espacoesselhodeagua.com

IBO RESTAURANTE

Portuguese and Mozambican cuisine

Armazém A, compartimento 2, Lisboa

T. (+351) 213 423 611/961 332 024

Tuesday to Thursday, 12.30pm-11 pm.

Friday to Saturday, 12.30pm-1am.

Sunday, 12.30pm-3.30pm.

Closed on Monday

www.ibo-restaurante.pt

LATA

Armazém CP, Doca de Santo Amaro,
Lisboa

T. (+351) 210 935 386

comercial@grupocpa.pt

www.lata.com.pt

MONTE MAR LISBOA

Specialties fresh fish and seafood

Rua da Cintura, Armazém 65

Cais do Sodré, Lisboa

T. (+351) 213 220 160

From Tuesday to Sunday, 12am-11pm

sales@onyriaresorts.com

www.mmllisboa.pt

NUNES REAL MARISQUEIRA

Seafood Restaurant

Rua Bartolomeu Dias, 172, Lisboa

T. (+351) 213 019 899

From Tuesday to Sunday, from 12 pm

to 12 am. Closes on Monday.

geral@nunesmarisqueira.pt

www.nunesmarisqueira.pt

PAP'AÇORDA

Portuguese cuisine

Mercado da Ribeira, Av. 24 de Julho,
49, 1.º, Lisboa

T. (+351) 213 464 811

Sunday, Tuesday and Wednesday,
noon-midnight. Thursday, Friday

and Saturday, midnight-2am

reservations@papacorda.com

papacorda.com

PÁTEO ALFACINHA RESTAURANTE HORTA

Portuguese cuisine

Rua do Guarda Jóias, 44, Lisboa

T. (+351) 213 642 171

comercial@pateoalfacinha.com

www.pateoalfacinha.com/
restaurantes

PORTUGÁLIA CERVEJARIA BELÉM

Av. Brasília, Edf. Espelho d'Água,
Lisboa

T. (+351) 213 032 700

Noon-midnight

www.portugalia.pt

PORTUGÁLIA CERVEJARIA CAIS DO SODRÉ

Rua Cintura do Porto de Lisboa, Lisboa

T. (+351) 213 422 138

Noon-midnight

www.portugalia.pt

POVO

Rua Nova do Carvalho, 32, Lisboa

T. (+351) 213 473 403

povo@ctlisbon.com

www.povolisboa.com

RESTAURANTE FEITORIA

& WINE BAR

Altis Belém Hotel & Spa, Doca do Bom Sucesso, Lisboa
 T. (+351) 210 400 200/208
 Open Monday to Saturday.
 Dinner: 7.30pm-11pm
 reservationsbelem@altishotels.com
 www.restaurantefeitoria.com

RESTAURANTE GEOGRAPHIA

Portuguese cuisine and lusophone influences
 Rua do Conde, 1, Lisboa
 T. (+351) 213 960 036
 Monday to Saturday: 12:30pm-3pm/
 /7:30pm-11:30pm
 ola@restaurantegeographia.pt
 www.restaurantegeographia.pt

SEGUNDO MUELLE

Peruvian food
 Praça Dom Luís I, 30, loja 4B, Lisboa
 T. (+351) 210 133 540
 Monday to Thursday and Sunday,
 12pm-12am. Friday and Saturday,
 12pm-1am
 sm.lisboa@segundomuelle.pt
 www.segundomuelle.com

SOPHIA NATURAL ITALIAN

Praça Dom Luís I, 34, Loja 9, Lisboa
 T. (+351) 210 499 710
 comercial@grupocpa.pt
 www.sophia.com.pt

SUD LISBOA TERRAZA

Italo-Mediterranean
 Av. Brasília, Pavilhão Poente, Lisboa
 T. (+351) 211 592 600
 Every day, 11am-2am
 comercial@sudlisboa.com
 www.sudlisboa.com

VALLE FLÔR

Portuguese cuisine
 Rua Jau, 54, Lisboa (Pestana Palace)
 T. (+351) 213 615 600
 Breakfast, 6.30am-10.30am.
 Weekends and holidays, 6.30am-
 -11am. Lunch, 12.30pm-3.30pm.
 Dinner, 7pm-10.30pm
 restaurante.valle-flor@pestana.com
 www.pestana.com

5 OCEANOS

Doca de Santo Amaro, Armazém 12, Lisboa
 T. (+351) 213 978 015
 Everyday, noon-1pm
 www.5oceanos.pt

FROM PRAÇA DO COMÉRCIO TO PARQUE DAS NAÇÕES

RESTAURANTE D' BACALHAU

Rua da Pimenta, 45, Parque das Nações, Lisboa
 T. (+351) 218 941 296
 Every day, 12pm-4pm; 7pm-11pm
 www.restaurantebacalhau.com

RESTAURANTE ESTAÇÃO MENINA BONITA

Av. Infante D. Henrique, 306, Armazém 5, 2.º, LISBOA
 T. (+351) 910 916 171
 reservas@estacaomb.pt
 estacaomeninabonita.pt

RESTAURANTE GOLF SPOT

Portuguese and Japanese cuisine
 Azinhaga das Galhargas, Lisboa
 T. (+351) 969 340 713
 Breakfast: 10.00am-12:00pm
 Lunches: Tuesday to Sunday,
 12:00pm-3:30pm. Dinners: Tuesday
 to Saturday, 7:30pm-10:30pm.
 Closes on Monday
 restaurantgolfspot@
 academiadegolfedelisboa.pt
 www.academiadegolfedelisboa.pt

RESTAURANTE MANJERICO ALEGRE

Rua Terreiro do Trigo, 94, Lisboa
 T. (+351) 210 532 846
 manjerico.alegre@gmail.com

SENHOR PEIXE

Rua da Pimenta, 35-37, Lisboa
 T. (+351) 218 955 892
 Closed on Monday
 www.senhorpeixe.pt

AVENIDAS NOVAS

ELEVEN

Mediterranean cuisine
 Rua Marquês de Fronteira, Jardim Amália Rodrigues, Lisboa
 T. (+351) 213 862 211
 Closed on Sunday
 www.restauranteleven.com

PORTUGÁLIA CERVEJARIA

Av. Almirante Reis, 117, Lisboa
 T. (+351) 213 140 002
 12:00-00:00. Noon-midnight
 www.portugalia.pt

RESTAURANTE TÍPICO O MADEIRENSE

Traditional Madeira cuisine
 Amoreiras Shopping Center, Loja 3026/7, Lisboa
 T. (+351) 213 830 827
 Every day 12pm-11pm
 www.omadeirense.pt

THE LINGERIE RESTAURANT

Portuguese cuisine
 Av. António Augusto de Aguiar, 88A, Lisboa
 T. (+351) 915 672 450
 From Wednesday to Friday 8:30pm-
 -01:00am; On Saturday 07:00pm-
 -10:00pm or 10:15pm-02:00am
 lingerielisboa@gmail.com
 www.lisboa.thelingerierestaurant.com

OTHERS

RESTAURANTE JARDIM DA LUZ

Quartel da Formação,
 Largo da Luz, Carnide
 T. (+351) 210 134 209
 geral@jardimdaluz.pt

OUT OF TOWN

CAFÉ PARIS

Portuguese and International cuisine
 Praça da República, 32 R/C, Sintra
 T. (+351) 219 105 860
 Every day, 9am-11pm
 comercial@screstauracao.com
 www.screstauracao.com

CENTRAL PALACE HOTEL

Portuguese and International cuisine
 Praça da República, 34-36 R/C, Sintra
 T. (+351) 219 105 860
 Every day, 9am-11pm
 comercial@screstauracao.com
 www.screstauracao.com

RESTAURANTS | ACCOMMODATION

MONTE MAR CASCAIS

Av. Nossa Senhora do Cabo, 2845,
Cascais
T. (+351) 214 869 270
montemar@onyriatesorts.com
www.mmcascais.pt

RESTAURANTE FORTALEZA DO GUINCHO

Estrada do Guincho, 2413, Cascais
T. (+351) 214 870 491
reservations@guinchotel.pt
www.fortalezadoguincho.com/
restaurante-fortaleza-do-guincho

DISCO AND PUBS

HAVANA

Doca de Santo Amaro, Armazém 5,
Alcântara
T. (+351) 213 979 893
Every day, 11 am-6am
info@havana.mail.pt
www.grupodoubleh.com

REAL SPORTS BAR

Watch your favorite sport.
Snacks, hamburgers and beer.
Rua São Sebastião da Pedreira,
234 C, Lisboa
T. (+351) 213 199 500
Every day, from 3:30 pm to 12 am.
rpl@realhotelsgroup.com
www.realpalacio.realhotelsgroup.com/
restaurants-lisbon/real-sports-bar/

HOTELS

★★★★★

138 LIBERDADE HOTEL

Av. da Liberdade, 138-142, Lisboa
T. (+351) 210 410 000
reception@138liberdadehotel.com
www.138liberdadehotel.com

ALTIS AVENIDA HOTEL

Rua 1.º de Dezembro, 120, Lisboa
T. (+351) 210 440 000
reservationsavenida@altishotels.com
www.altishotels.com

ALTIS BELÉM HOTEL & SPA

Doca do Bom Sucesso, Lisboa
T. (+351) 210 400 200
reservationsbelem@altishotels.com
www.altishotels.com

ALTIS GRAND HOTEL

Rua Castilho, 11, Lisboa
T. (+351) 213 106 000
reservations@altishotels.com
www.altishotels.com

BAIRRO ALTO HOTEL

Praça Luís de Camões, 2, Lisboa
T. (+351) 213 408 288
info@bairroaltohotel.com
www.bairroaltohotel.com

CORINTHIA HOTEL LISBON

Av. Columbano Bordalo Pinheiro, 105,
Lisboa
T. (+351) 217 236 363
lisbon@corinthia.com
www.corinthia.com

CORPO SANTO HOTEL

Largo do Corpo Santo,
23-25, Lisboa
T. (+351) 218 288 000
info@corposantohotel.com
www.corposantohotel.com

CROWNE PLAZA

CAPARICA LISBON
Largo Aldeia dos Capuchos, Caparica
T. (+351) 212 909 000
reservations@cpccaparicalisbon.com
www.crowneplaza.com/caparicalisbon

DOLCE CAMPOREAL LISBOA

Rua do Campo, Turcifal
T. (+351) 261 960 900
camporeal.guestservices@dolce.com
www.dolcecamporeal.com

EDITORY RIVERSIDE

Av. Infante D. Henrique, 1, Lisboa
T. (+351) 219 022 300
riverside@editoryhoteles.pt
editoryhoteles.com/riverside-apolonia-lisboa

EPIC SANA LISBOA

Av. Eng.º Duarte Pacheco, 15
T. (+351) 212 468 688
reservations@sanahotels.com
T. (+351) 211 597 305
info.lisboa@epic.sanahotels.com
www.sanahotels.com

EUROSTARS DAS LETRAS

Rua Castilho, 6-12, Lisboa
T. (+351) 213 573 094
info@eurostarsdasletras.com
www.eurostarsdasletras.com

EVOLUTEE HOTEL

Cabeço da Serra - Vau, Óbidos
T. (+351) 262 240 220
info@evoluteehotel.com
www.evoluteehotel.com

FAROL HOTEL

Av. Rei Humberto II de Itália, 7,
Cascais
T. (+351) 214 823 490
farol@farol.com.pt
www.farol.com.pt

GRANDE REAL VILLA ITÁLIA HOTEL & SPA

Rua Frei Nicolau de Oliveira,
100, Cascais
T. (+351) 210 966 000
realvillaitalia@hoteisreal.com
www.realhotelsgroup.com

HOTEL ALBATROZ

Rua Frederico Arouca, 100, Cascais
T. (+351) 214 847 380
info@thealbatrozcollection.com
www.thealbatrozcollection.com

HOTEL AVENIDA PALACE

Rua 1.º de Dezembro, 123, Lisboa
T. (+351) 213 218 100
reservas@hotelavenidapalace.pt
www.hotelavenidapalace.pt

HOTEL CASA DE PALMELA

EN 10 KM 33,5, Setúbal
T. (+351) 265 249 650
reservation-casapalmela@ouh.pt
www.hotelcasapalmela.pt

HOTEL CASCAIS MIRAGEM

Av. Marginal, 8554, Cascais
T. (+351) 210 060 600
geral@cascaismirage.com
www.cascaismirage.com

HOTEL DOM PEDRO LISBOA

Av. Eng.º Duarte Pacheco, 24, Lisboa
T. (+351) 213 896 600
lisboa.reservations@dompedro.com
www.dompedro.com

HOTEL FORTALEZA DO GUINCHO

Estrada do Guincho, 2413, Cascais
T. (+351) 214 870 491
reservations@guinchotel.pt
www.fortalezadoguincho.com

HOTEL OLISSIPPO LAPA PALACE

Rua Pau de Bandeira, 4, Lisboa
 T. (+351) 213 949 494
 info.lapa@olissippohotels.com
 www.olissippohotels.com

HOTEL PALÁCIO DO GOVERNADOR

Rua Bartolomeu Dias, 117, Lisboa
 T. (+351) 212 467 800
 bookings@nauhotels.com
 www.nauhotels.com

HOTEL PORTO BAY LIBERDADE

Rua Rosa Araújo, 8, Lisboa
 T. (+351) 210 015 700
 portobayliberdade@portobay.pt
 www.portobay.com

HOTEL QUINTA DA MARINHA RESORT

Rua das Palmeiras, Quinta da
 Marinha, Cascais
 T. (+351) 214 860 100
 sales@onyriaresorts.com
 www.quintadamarinha.com

HOTEL REAL PALÁCIO

Rua Tomás Ribeiro, 115, Lisboa
 T. (+351) 213 199 500
 info@hoteisreal.com
 www.realhotelsgroup.com

HOTEL SOFITEL LISBON LIBERDADE

Av. da Liberdade, 127, Lisboa
 T. (+351) 213 228 300
 h1319@sofitel.com
 www.sofitel-lisboa.com

HOTEL TIVOLI - LISBOA

Av. da Liberdade, 185, Lisboa
 T. (+351) 213 198 900
 avenidaliberdade@tivolihotels.com
 www.tivolilisboa.com

HOTEL TIVOLI - PALÁCIO DE SETEAIS

Av. Barbosa du Bocage, 8, Seteais,
 Sintra
 T. (+351) 219 233 200
 gr.palacioseteais@tivolihotels.com
 www.tivolipalacioseteais.com

HOTEL VALVERDE

Av. da Liberdade, 164, Lisboa
 T. (+351) 210 940 300
 info@valverdehotel.com
 www.valverdehotel.com

HOTEL VILA GALÉ COLLECTION PALÁCIO DOS ARCOS

Largo Conde das Alcáçovas,
 Paço de Arcos
 T. (+351) 210 493 200
 palacio.reservas@vilagale.com
 www.vilagale.com

HOTEL VILA GALÉ SINTRA

Rua Fonte da Granja, 30, Sintra
 T. (+351) 210 520 000
 sintra@vilagale.com
 www.vilagale.com

HYATT REGENCY LISBON

Rua da Junqueira, 63, Lisboa
 T. (+351) 21 482 9123
 hyatt.com/pt-PT/hotel/portugal/
 /hyatt-regency-lisbon/lishr

IBEROSTAR LISBOA

Rua Castilho, 64, Lisboa
 T. (+351) 215 859 000
 lisboa@iberostar.com
 www.iberostar.com/pt/hoteis/lisboa

IMMERSO

Rua Bica da Figueira, Marvão, Ericeira
 T. (+351) 261 104 420
 info@immerso.pt
 immerso.pt

INTERCONTINENTAL CASCAIS-ESTORIL

Avenida Marginal, 8023, Monte Estoril
 T. (+351) 218 291 100
 liset.reservations@ihg.com
 estorilintercontinental.com

INTERCONTINENTAL LISBON

Rua Castilho, 149, Lisboa
 T. (+351) 213 818 700
 lisha.reservations@ihg.com
 www.intercontinental.com

MEMMO PRINCIPE REAL

Rua D. Pedro V, 56, Lisboa
 T. (+351) 219 016 800
 preal@memmohotels.com
 memmohotels.com

MYRIAD BY SANA HOTELS

Cais das Naus, Lote 2.21.01, Lisboa
 T. (+351) 212 468 688
 reservations@sanahotels.com
 T. (+351) 211 107 600
 info@myriad.pt
 www.sanahotels.com

ONYRIA MARINHA BOUTIQUE HOTEL

Quinta da Marinha, Rua do Clube, Cascais
 T. (+351) 21486 01 00
 sales@onyriaresorts.com
 onyriamarinha.com

PALÁCIO ESTORIL HOTEL GOLF & SPA

Rua Particular, Estoril
 T. (+351) 214 648 000
 info@hotelestorilpalacio.pt
 www.palacioestorilhotel.com

PALÁCIO LUDOVICE WINE EXPERIENCE HOTEL

Rua de São Pedro de Alcântara,
 39-49, Lisboa
 T. (+351) 211 513 850
 sales@palacioludovice.com
 www.palacioludovice.com

PENHA LONGA RESORT

Estrada da Lagoa Azul, Linhó, Sintra
 T. (+351) 219 249 011
 resort.penhalonga@penhalonga.com
 www.penhalonga.com

PESTANA PALACE HOTEL & NATIONAL MONUMENT

Rua Jau, 54, Lisboa
 T. (+351) 213 615 600
 reception.cph@pestana.com
 www.pestana.com

PRAIA D'EL REY MARRIOTT GOLF & BEACH RESORT

Av. Dona Inês de Castro, 1,
 Vale de Janelas, Amoreira, Óbidos
 T. (+351) 262 905 100
 info.pdr@marriott-pdr.pt
 www.praia-del-rey.com

RITZ FOUR SEASONS HOTEL LISBOA

Rua Rodrigo da Fonseca, 88, Lisboa
 T. (+351) 213 811 400
 reservations.lis@fourseasons.com
 www.fourseasons.com

ACCOMMODATION

SHERATON LISBOA HOTEL & SPA

Rua Latino Coelho, 1, Lisboa
T. (+351) 213 120 000
sheraton.lisboa@sheraton.com
www.sheratonlisboa.com

THE IVENS HOTEL

Rua Capelo, 5, Lisboa
T. (+351) 210 543 135
book@theivenshotel.com
www.theivenshotel.com

THE LUMIARES HOTEL & SPA

Rua Diário de Notícias, 142, Lisboa
T. (+351) 211 160 200
info@thelumiare.com
www.thelumiare.com

THE OITAVOS

Rua de Oitavos, Quinta da Marinha,
Cascais
T. (+351) 214 860 020
info@theoitavos.com
www.theoitavos.com

THE ONE PALÁCIO DA ANUNCIADA

Rua das Portas de Santo Antão,
112-134, Lisboa
T. (+351) 210 412 300
info.hpa@hotelstheone.com
www.hotelstheone.com

THE VINTAGE LISBOA HOTEL

Rua Rodrigo da Fonseca, 2, Lisboa
T. (+351) 210 405 400
info@thevintagelisboa.com
www.thevintagelisboa.com

VIP GRAND LISBOA HOTEL & SPA

Av. 5 de Outubro, 197, Lisboa
T. (+351) 210 435 000
hotelviplisboa@viphotels.com
www.viphotels.com

★★★★

1908 LISBOA HOTEL

Largo do Intendente Pina Manique,
6, Lisboa
T. (+351) 218 804 000
info@1908lisboahotel.com
www.1908lisboahotel.com

AROEIRA LISBON HOTEL – SEA & GOLF RESORT

Av. Pinhal da Aroeira, 1, Herdade
da Aroeira, Charneca da Caparica
T. (+351) 210 514 999
geral@aroeiralisboahotel.com
www.aroeiralisboahotel.com

AVANI AVENIDA LIBERDADE

Rua Júlio César Machado, 7, Lisboa
T. (+351) 213 591 000
lisbon@avani-hotels.com
www.avanihotels.com

BESSAHOTEL LIBERDADE

Av. da Liberdade, 29-41, Lisboa
T. (+351) 213 210 500
infoliberaldade@bessahotel.com
www.bessahotel.com

CZAR LISBON HOTEL

Av. Almirante Reis, 103, Lisboa
T. (+351) 211 115 200
reservas@czarlisbonhotel.com
www.czarlisbonhotel.com

DOUBLETREE BY HILTON LISBON – FONTANA PARK

Rua Eng. Vieira da Silva, 2, Lisboa
T. (+351) 210 410 600
lisbonfontanapark.info@hilton.com
www.doubletree3.hilton.com

EVOLUTION CASCAIS-ESTORIL

Av. Marginal, 7034 A, Estoril
T. (+351) 211 590 200
hello.cascais-estoril@evolution-hotels.com
www.evolution-hotels.com

EVIDÊNCIA BELVERDE ATTITUDE HOTEL

Av. de Belverde, 70, Belverde, Seixal
T. (+351) 210 426 900
belverde@evidenciahoteis.com
www.evidenciabelverde.com

EVOLUTION LISBOA

Praça Duque de Saldanha, 4, Lisboa
T. (+351) 212 468 688
reservations@sanahotels.com
T. (+351) 211 590 200
hello.lisboa@evolution-hotels.com
www.sanahotels.com

FOUR POINTS BY SHERATON SESIMBRA

Rua 4 de Maio, Lote 50,
Altinho de São João, Sesimbra
T. (+351) 210 518 370
www.marriott.com/LISFP

H10 DUQUE DE LOULÉ

Av. Duque de Loulé, 81-83, Lisboa
T. (+351) 213 182 000
reservations.hdl@h10hotels.com
www.hotelh10duquedeloule.com

HERITAGE AV. LIBERDADE HOTEL

Av. da Liberdade, 28, Lisboa
T. (+351) 213 404 040
aviiberdade@heritage.pt
www.heritage.pt

HF FÉNIX LISBOA

Praça Marquês de Pombal, 8, Lisboa
T. (+351) 213 716 661
booking@lisboa@hfhhotels.com
www.hfhhotels.com

HF FÉNIX URBAN

Av. António Augusto de Aguiar, 14,
Lisboa
T. (+351) 213 515 000
booking.urban@hfhhotels.com
www.hfhhotels.com

HOLIDAY INN LISBOA

Av. António José de Almeida, 28A,
Lisboa
T. (+351) 210 044 000
hil@grupo-continental.com
www.holidayinn.com/lisbonprt

HOLIDAY INN LISBON CONTINENTAL

Rua Laura Alves, 9, Lisboa
T. (+351) 210 046 000
hic@grupo-continental.com
www.grupo-continental.com

HOTEL AÇORES LISBOA

Av. Columbano Bordalo Pinheiro, 3,
Lisboa
T. (+351) 217 222 920
hal@bhc.pt
www.bensaudehotels.com

HOTEL BRITANIA

Rua Rodrigues Sampaio, 17, Lisboa
T. (+351) 213 155 016
britania.hotel@heritage.pt
www.heritage.pt

HOTEL DA ESTRELA

Rua Saraiva de Carvalho, 35, Lisboa
T. (+351) 211 900 100
hotel.daestrela@unlockhotels.com
www.hoteldaeestrela.com

HOTEL DO MAR

Rua General Humberto Delgado, 10,
Sesimbra
T. (+351) 212 288 300
hoteldomar@hoteldomar.pt
www.hoteldomar.com

HOTEL ESTORIL EDEN

Av. de Sabóia, 209, Monte Estoril
T. (+351) 214 667 600
geral@hotelestorileden.pt
www.hotelestorileden.pt

HOTEL FLÓRIDA

Rua Duque de Palmela, 34, Lisboa
T. (+351) 213 576 145
sales@hotel-florida.pt
www.hotel-florida.pt

HOTEL LISBOA PLAZA

Travessa do Salitre, 7, Lisboa
T. (+351) 213 218 218
plaza.hotels@heritage.pt
www.heritage.pt

HOTEL MARQUÊS DE POMBAL

Av. da Liberdade, 243, Lisboa
T. (+351) 213 197 900
info@hotel-marquesdepombal.pt
www.hotel-marquesdepombal.pt

HOTEL MELIA SETÚBAL

Av. Alexandre Herculano, 58, Setúbal
T. (+351) 265 240 400
melia.setubal@meliaportugal.com
www.meliasetubal.com

HOTEL MERCURE LISBOA

Av. José Malhoa, 23, Lisboa
T. (+351) 217 208 000
h3346@accor.com
www.mercure.com

HOTEL MUNDIAL

Praça Martim Moniz, 2, Lisboa
T. (+351) 218 842 000
reservations@hotel-mundial.net
www.hotel-mundial.pt

HOTEL NH CAMPO GRANDE

Campo Grande, 7, Lisboa
T. (+351) 217 957 555
nhcampogrande@nh-hotels.com
www.nh-hotels.com

**HOTEL NH COLLECTION
LIBERDADE**

Av. da Liberdade, 180 B, Lisboa
T. (+351) 213 514 060
nhliberdade@nh-hotels.com
www.nh-hotels.com

HOTEL NOVOTEL LISBOA

Av. José Malhoa, 1-1A, Lisboa
T. (+351) 217 244 800
h0784@accor.com
www.accorhotels.com

HOTEL REAL OEIRAS

Rua Álvaro Rodrigues de Azevedo, 5,
Paço de Arcos
T. (+351) 214 469 900
roe@realhotelsgroup.com
www.realoeiras.realhotelsgroup.com

HOTEL SMY LISBOA

Rua da Artilharia, 1, 112, Lisboa
T. (+351) 212 484 900
info.lisboa@smyhotels.com
www.smyhotels.com

HOTEL OLISSIPPO CASTELO

Rua Costa do Castelo, 126, Lisboa
T. (+351) 218 820 190
info.oc@olissippohotels.com
www.olissippohotels.com

HOTEL OLISSIPPO MARQUÊS DE SÁ

Av. Miguel Bombarda, 130, Lisboa
T. (+351) 217 911 014
rsv@olissippohotels.com
www.olissippohotels.com

HOTEL OLISSIPPO ORIENTE

Av. Dom João II, 32,
Parque das Nações, Lisboa
T. (+351) 218 929 100
rsv@olissippohotels.com
www.olissippohotels.com

HOTEL OLISSIPPO SALDANHA

Av. Praia da Vitória, 30, Lisboa
T. (+351) 210 006 690
info.os@olissippohotels.com
www.olissippohotels.com

HOTEL PORTUGAL

Rua João das Regras, 4, Lisboa
T. (+351) 218 842 120
info@hotelportugal.com
www.hotelportugal.com

HOTEL PRAIA MAR

Rua do Gurié, 16, Carcavelos
T. (+351) 214 585 100
praiaamar@almeidahotels.pt
www.almeidahotels.pt/hotel-praia-mar

HOTEL PRÍNCIPE REAL

Rua da Alegria, 53, Lisboa
T. (+351) 213 407 350
geral@hotelprincipereal.com
www.belverhotels.com

HOTEL TIVOLI ORIENTE

Av. Dom João II, 27,
Parque das Nações, Lisboa
T. (+351) 218 915 100
oriente@tivoli-hotels.com
www.tivoloriente.com

HOTEL NH SINTRA CENTRO

Praça da República, Sintra
T. (+351) 219 237 200
nhsintra@nh-hotels.com
www.nh-hotels.pt/hotel/nh-sintra

**HOTEL TRYP LISBOA CAPARICA
MAR BY WINDHAM**

Av. General Humberto Delgado,
47, Costa da Caparica
T. (+351) 212 918 900
res.tlc@trypportugal.com
www.tryplisboacaparica.com

MELIA LISBOA ORIENTE

Av. Dom João II, Lt. 1.16.02B, Lisboa
T. (+351) 218 930 000
res.mlo@meliaportugal.com
www.melialisboaoriente.com

HOTEL VILA GALÉ CASCAIS

Rua Frei Nicolau de Oliveira, 80
Parque da Gandarinha, Cascais
T. (+351) 214 826 000
cascais@vilagale.com
www.vilagale.com

HOTEL VILA GALÉ ESTORIL

Av. Marginal – Apartado 49, Estoril
T. (+351) 214 648 400
estoril@vilagale.com
www.vilagale.com

ACCOMMODATION

HOTEL VILA GALÉ ERICEIRA

Largo dos Navegantes, 1, Ericeira
T. (+351) 261 869 900
ericeira@vilagale.com
www.vilagale.com

HOTEL VILA GALÉ ÓPERA

Travessa do Conde da Ponte, Lisboa
T. (+351) 213 605 400
opera@vilagale.com
www.vilagale.com

HOTEL VINCCI BAIXA

Rua do Comércio, 32-38, Lisboa
T. (+351) 218 803 190
baixa@vincchoteles.com
www.vincchoteles.com

HOTEL YORK HOUSE LISBOA

Rua das Janelas Verdes, 32, Lisboa
T. (+351) 213 962 435
manager@yorkhouseslisboa.com
www.yorkhouseslisboa.com

HOTEL ZENIT LISBOA

Av. 5 de Outubro, 11, Lisboa
T. (+351) 213 102 200
dir@lisboa@zenithoteles.com
www.zenithoteles.com

INSPIRA LIBERDADE BOUTIQUE HOTEL

Rua Santa Marta, 48, Lisboa
T. (+351) 210 440 900
reservas@inspirahotels.com
www.inspirahotels.com

INTERNACIONAL DESIGN HOTEL

Rua da Betesga, 3, Rossio, Lisboa
T. (+351) 213 240 990
info@idesignhotel.com
www.idesignhotel.com

JERÓNIMOS 8

Rua dos Jerónimos, 8, Lisboa
T. (+351) 213 600 900
jeronimos8@almeidahotels.pt
www.jeronimos8.com

LUX LISBOA PARK

Rua Padre António Vieira, 32-34, Lisboa
T. (+351) 213 894 320
lux.lisboa@luxhotels.pt
www.lisboa.luxhotels.pt

LEGENDARY LISBOA SUITES

Rua Rodrigo da Fonseca, 44-50, Lisboa
T. (+351) 210 046 600
legendarylisboasuites@
continentalhotels.eu
www.legendarylisboasuites.com

LEZÍRIA PARQUE HOTEL

Av. Barranco de Cegos, 22,
Vila Franca de Xira
T. (+351) 262 276 670
dir@lph@continentalhotels.eu
www.continentalhotels.eu

LISBOA MARRIOTT HOTEL

Av. dos Combatentes, 45, Lisboa
T. (+351) 217 235 400
lisbon@marrriotthotels.com
www.lisbonmarrriott.com

JÚPITER LISBOA HOTEL

Av. da República, 46, Lisboa
T. (+351) 210 730 100
info.lisboa@jupiterhoteis.com
www.jupiterlisboa.com

LUMEN HOTEL & THE LISBON LIGHT SHOW

Rua Sousa Martins, 20, Lisboa
T. (+351) 210 547 410
booking@lumenhotel.pt
www.lumenhotel.pt

LUTÉCIA SMART DESIGN HOTEL

Av. Frei Miguel Contreiras, 52, Lisboa
T. (+351) 218 411 300
info@luteciahotel.com
www.luteciahotel.com

LX BOUTIQUE HOTEL

Rua do Alecrim, 12, Lisboa
T. (+351) 213 474 394
goncalo.dias@lxboutiquehotel.com
www.lxboutiquehotel.com

MADALENA BY THE BEAUTIQUE HOTELS

Rua da Madalena, 271, Lisboa
T. (+351) 210 537 006
guestservice@thebeautiquehotels.com
www.thebeautiquehotels.com/pt/
madalena

MELIA LISBOA AEROPORTO

Rua C, 2, Aeroporto Internacional
de Lisboa
T. (+351) 218 425 000
res.mla@meliaportugal.com
www.melialisboaaeroporto.com

MERCURE LISBOA ALMADA

Rua Abel Salazar, 9, Pragal, Almada
T. (+351) 212 761 401
ha040@accor.com
www.mercure.com

MEMMO ALFAMA

Travessa das Merceeiras, 27, Lisboa
T. (+351) 210 495 660
alfama@memmohotels.com
memmohotels.com

NEYA LISBOA HOTEL

Rua Dona Estefânia, 71-77, Lisboa
T. (+351) 213 101 800
info@neyahotels.com
www.neyahotels.com

PESTANA LISBOA VINTAGE

Rua Braancamp, 7, Lisboa
T. (+351) 210 518 000
fo.lisboavintage@pestanacom
www.pestanacom

PESTANA CR7 LISBOA

Rua da Prata, 24-28, Lisboa
T. (+351) 210 401 710
fo.pestanacr7lisbon@pestanacom
www.pestanacr7.com

PESTANA SINTRA GOLF & SPA HOTEL

Rua Mato da Mina, 19, Sintra
T. (+351) 210 424 300
guest@pestanacom
www.pestanacom

PORTO BAY MARQUÊS

Rua Duque de Palmela, 32, Lisboa
T. (+351) 212 000 000
portobaymarques@portobay.pt
www.portobay.com

PRAIA DO SAL RESORT

Rua das Caravelas, 88, Alcochete
T. (+351) 212 343 165
geral@praiadosal.com
www.praiadosal.com

RADISSON BLU LISBOA

Av. Marechal Craveiro Lopes, 390, Lisboa
T. (+351) 210 045 000
rad@grupo-continental.com
www.lisbon.radissonblu.com

RAMADA BY**WYNDHAM LISBON HOTEL**

Av. Eng.º Arantes e Oliveira, 9, Lisboa
T. (+351) 218 434 200
reservations@olaiasparkhotel.com
www.ramada.com

EPIC SANA MARQUÊS

Av. Fontes Pereira de Melo, 8, Lisboa
T. (+351) 212 468 688
reservations@sanahotels.com
T. (+351) 210 064 300
info.marques@epic.sanahotels.com
www.sanahotels.com

SANA MALHOA

Av. José Malhoa, 8, Lisboa
T. (+351) 212 468 688
reservations@sanahotels.com
T. (+351) 210 061 800
sanamalhoa@sanahotels.com
www.sanahotels.com

SANA METROPOLITAN

Rua Soeiro Pereira Gomes, 2, Lisboa
T. (+351) 212 468 688
reservations@sanahotels.com
T. (+351) 217 982 500
sanametropolitan@sanahotels.com
www.sanahotels.com

SANA SESIMBRA HOTEL

Av. 25 de Abril, Sesimbra
T. (+351) 212 468 688
reservations@sanahotels.com
T. (+351) 212 289 000
sanasesimbra@sanahotels.com
www.sanahotels.com

SESIMBRA HOTEL & SPA

Praça da Califórnia, Sesimbra
T. (+351) 212 289 800
info@sesimbrahotelspa.com
www.sesimbrahotelspa.com

THE BEAUTIQUE HOTELS FIGUEIRA

Praça da Figueira, 16, Lisboa
T. (+351) 210 492 940
reservations@thebeautiquehotels.com
www.thebeautiquehotels.com

TURIM ALAMEDA HOTEL

Av. Rovisco Pais, 34, Lisboa
T. (+351) 218 411 550
turimalamedahotel@turimhoteis.com
www.turimhoteis.com

TURIM EUROPA HOTEL

Rua S. Sebastião da Pedreira, 19, Lisboa
T. (+351) 210 330 800
turimeuropahotel@turimhoteis.com
www.turimhoteis.com

TURIM IBERIA HOTEL

Av. 5 de Outubro, 160, Lisboa
T. (+351) 217 906 110
turimiberiahotel@turimhoteis.com
www.turimhoteis.com

TURIM LISBOA HOTEL

Rua Filipe Folque, 20, Lisboa
T. (+351) 213 139 410
turimlisboahotel@turimhoteis.com
www.turimhoteis.com

VIP EXECUTIVE ART'S

Av. Dom João II, 47, Lisboa
T. (+351) 210 020 400
hotelarts@viphotels.com
www.viphotels.com

VIP EXECUTIVE ÉDEN

APARTHOTEL
Praça dos Restauradores, 24, Lisboa
T. (+351) 213 216 600
isabelbeja@viphotels.com
www.viphotels.com

VIP EXECUTIVE ENTRECAMPOS HOTEL & CONFERENCE

Av. 5 de Outubro, 295 D, Lisboa
T. (+351) 210 043 046
hotelentrecampos@viphotels.com
www.viphotels.com

VIP EXECUTIVE MARQUÊS APARTHOTEL

Av. Duque de Loulé, 45, Lisboa
T. (+351) 213 510 480
suitesdomarques@viphotels.com
www.viphotels.com

VIP EXECUTIVE PICOAS HOTEL

Rua Filipe Folque, 12, Lisboa
T. (+351) 210 513 200
hotelpicoas@viphotels.com
www.viphotels.com

VIP EXECUTIVE SALDANHA

Rua Fernão Lopes, 25, Lisboa
T. (+351) 213 308 620
hotelsaldanha@viphotels.com
www.viphotels.com

VIP EXECUTIVE SANTA IRIA

Estrada Nacional 10, 1260,
Santa Iria da Azóia
T. (+351) 210 032 300
hotelsantairia@viphotels.com
www.viphoteis.com

WC BY THE BEAUTIQUE HOTELS

Av. Almirante Reis, 35, Lisboa
T. (+351) 210 537 001
guestservice@thebeautiquehotels.com
https://www.thebeautiquehotels.com/
pt/wc/

★★★

AMAZÓNIA LISBOA HOTEL

Travessa Fábrica dos Pentes,
12-20, Lisboa
T. (+351) 211 147 831
reclisboa@amazoniahoteis.com
www.amazoniahoteis.com

AMERICA DIAMOND'S HOTEL

Rua Tomás Ribeiro, 47, Lisboa
T. (+351) 213 521 177
info@americadiamondshotel.com
www.americadiamondshotel.com

ARRIBAS SINTRA HOTEL

Av. Alfredo Coelho, 28,
Praia Grande, Sintra
T. (+351) 219 289 050
mail@hotelarribas.pt
www.arribashotel.com

CASA DE SÃO MAMEDE HOTEL

Rua da Escola Politécnica, 159, Lisboa
T. (+351) 213 963 166
casasaomamedehotel@gmail.com
www.casasaomamede.pt

DOM CARLOS LIBERTY HOTEL

Rua Alexandre Herculano, 13, Lisboa
T. (+351) 213 173 570
comercial@domcarloshoteis.com
www.domcarloshoteis.com

DOM CARLOS PARK HOTEL

Av. Duque de Loulé, 121, Lisboa
T. (+351) 213 512 590
reservas@domcarloshoteis.com
www.domcarloshoteis.com

HF FÉNIX GARDEN

Rua Joaquim António de Aguiar, 3,
Lisboa
T. (+351) 213 717 120
booking.garden@hfhoteis.com
www.hfhoteis.com

ACCOMMODATION

HF FÉNIX MUSIC

Rua Joaquim António de Aguiar, 5, Lisboa
T. (+351) 210 496 570
booking.music@hfhotels.com
www.hfhotels.com

HOLIDAY INN EXPRESS LISBON – AEROPORTO

Rua da Guiné, Prior Velho
T. (+351) 210 080 800
hielisbnairport@realhotelsgroup.com
www.hiexpress.com

HOTEL HOLIDAY INN EXPRESS LISBON – OIRAS

Av. Dom Félix Niza Ribeiro, Porto Salvo
T. (+351) 214 232 040
expresshilo@grupo-continental.com
www.hiexpress.com/lisbonoiras

HOLIDAY INN EXPRESS LISBON PLAZA SALDANHA

Av. João Crisóstomo, 40, Lisboa
T. (+351) 211 515 900
hielibonsaldanha@realhotelsgroup.com
www.hiexpress.com/lisbon-ps

HOTEL A. S. LISBOA

Av. Almirante Reis, 188, Lisboa
T. (+351) 218 429 360
info@hotel-aslisboa.pt
www.hotel-aslisboa.com

HOTEL ALVORADA

Rua de Lisboa, 3, Estoril
T. (+351) 214 649 860
geral@hotelalvorada.com
www.hotelalvorada.com

HOTEL AVENIDA PARK

Av. Sidónio Pais, 6, Lisboa
T. (+351) 213 532 181
info@avenidapark.com
www.avenidapark.com

HOTEL BORGES

Rua Garrett, 108, Lisboa
T. (+351) 213 461 951
info@hotelborges.com
www.hotelborges.com

HOTEL EXCELSIOR

Rua Rodrigues Sampaio, 172, Lisboa
T. (+351) 213 537 151
hotelexcelsior3@hotmail.com
www.hotel-excelsior.pt

HOTEL FLAMINGO

Rua Castilho, 41, Lisboa
T. (+351) 213 841 200
geral@hotelflamingo.pt
www.hotelflamingo.pt

HOTEL HOLIDAY INN EXPRESS LISBON-ALFRAGIDE

Rua Quinta do Paizinho, 11, Carnaxide
T. (+351) 214 009 200
hielisbnalfragide@realhotelsgroup.com
www.hielisboaalfragide.pt

HOTEL IBIS PARQUE DAS NAÇÕES

Rua do Mar Vermelho, Lote 1.07.2.2, Lisboa
T. (+351) 210 730 470
h8501@accor.com
www.ibis.com

HOTEL LIDO

Rua do Alentejo, 12, Estoril
T. (+351) 214 679 420
lido@hotellido.pt
www.hotellido.pt

HOTEL LONDRES

Av. Fausto Figueiredo, 279, Estoril
T. (+351) 214 648 300
info@hotellondres.com
www.hotellondres.com

HOTEL MÉTROPOLÉ

Praça Dom Pedro IV, 30, Lisboa
T. (+351) 213 219 030
metropole@almeidahotels.pt
www.almeidahotels.com

HOTEL MIRAPARQUE

Av. Sidónio Pais, 12, Lisboa
T. (+351) 213 524 286
hotel@miraparque.com
www.miraparque.com

HOTEL NACIONAL

Rua Castilho, 34, Lisboa
T. (+351) 213 554 433
geral@hotel-nacional.com
www.hotel-nacional.com

HOTEL PRÍNCIPE LISBOA

Av. Duque de Ávila, 201, Lisboa
T. (+351) 213 592 050
hotel@hotelpripncipelisboa.com
www.hotelpripncipelisboa.com

HOTEL ROMA

Av. de Roma, 33, Lisboa
T. (+351) 217 932 244
info@hotelroma.pt | www.hotelroma.pt

HOTEL STAR INN LISBON

Rua C – Edifício 125
Aeroporto Internacional de Lisboa
T. (+351) 218 425 700
reservas.lisbon@hotelstarinn.com
www.hotelstarinn.com

HOTEL TRAVEL PARK LISBOA

Av. Almirante Reis, 64, Lisboa
T. (+351) 218 102 100
reservas@hoteltravelpark.com
www.hoteltravelpark.com

IBIS STYLES LISBOA CENTRO MARQUÊS DE POMBAL

Av. Fontes Pereira de Melo, 5, Lisboa
T. (+351) 213 568 800
HA9R8@accor.com
www.ibis.com

LISBOA CENTRAL PARK

Av. Sidónio Pais, 4, Lisboa
T. (+351) 213 502 060
info@lcpark.com
www.lcpark.com

MAMA LISBOA

Rua Alexandre Herculano, 51, Lisboa
T. (+351) 210 549 899
lisboa@mamashelter.com
www.mamashelter.com

MASA HOTEL ALMIRANTE

Av. Almirante Reis, 68, Lisboa
T. (+351) 210 193 750
comercial@masahotel.com
www.masahotel.com

MAXIME HOTEL

Praça da Alegria, 58, Lisboa
T. (+351) 218 716 600
mxh@realhotelsgroup.com
www.maximehotellisbon.com

MOXY LISBOA ORIENTE

Av. Aquilino Ribeiro Machado, 10, Lisboa
T. (+351) 210 488 350
moxyoriente@hotihoteis.com
www.moxylisboaoriente.com

MY STORY HOTEL CHARMING AUGUSTA

Rua São Nicolau, 78, Lisboa
T. (+351) 211 147 899
guestservice@mystoryhotels.com
www.mystoryhotels.com

MY STORY HOTEL OURO

Rua Áurea, 100, Lisboa
T. (+351) 213 400 380
guestservice@mystoryhotels.com
www.mystoryhotels.com

MY STORY HOTEL ROSSIO

Praça Dom Pedro IV, 59, Lisboa
T. (+351) 213 400 380
guestservice@mystoryhotels.com
www.mystoryhotels.com

MY STORY HOTEL TEJO

Rua dos Condes de Monsanto, 2, Lisboa
T. (+351) 218 866 182
guestservice@mystoryhotels.com
www.mystoryhotels.com

SANA CAPITOL HOTEL

Rua Eça de Queiroz, 24, Lisboa
T. (+351) 212 468 688
reservations@sanahotels.com
T. (+351) 213 536 811
sanacapitol@sanahotels.com
www.sanahotels.com

SANA RENO HOTEL

Av. Duque D'Ávila, 195-197, Lisboa
T. (+351) 212 468 688
reservations@sanahotels.com
T. (+351) 213 135 000
sanareno@sanahotels.com

SANA REX HOTEL

Rua Castilho, 169, Lisboa
T. (+351) 212 468 688
reservations@sanahotels.com
T. (+351) 213 882 161
sanarex@sanahotels.com
www.sanahotels.com

THE LIFT BOUTIQUE HOTEL

Rua Aurea, 265, Lisboa
T. (+351) 211 165 766
diretor@theliftboutiquehotel.com
www.theliftboutiquehotel.com

TURIM RESTAURADORES HOTEL

Rua da Glória, 9, Lisboa
T. (+351) 213 400 270
turimrestauradoreshotel@turimhoteis.com
www.turimhoteis.com

VIP EXECUTIVE BERNA

Av. António Serpa, 13, Lisboa
T. (+351) 217 814 300
hotelberna@viphotels.com
www.viphotels.com

VIP EXECUTIVE ZURIQUE

Rua Ivone Silva, 18, Lisboa
T. (+351) 217 814 000
hotelzurique@viphotels.com
www.viphotels.com

OTHER HOTELS**HOTEL ALEGRIA**

Closed for works
Praça de Alegria, 12, Lisboa
T. (+351) 213 220 670
mail@alegriagnet.com

HOTEL D. SANCHO I

Av. da Liberdade, 202, Lisboa
T. (+351) 213 513 160
info@domsancho.com
www.domsancho.com

HOTEL DOM AFONSO HENRIQUES

Rua Cristóvão Falcão, 8, Lisboa
T. (+351) 218 117 010
reservas@hoteldah.com
www.hoteldah.com

HOTEL DUAS NAÇÕES

Rua da Vitória, 41, Lisboa
T. (+351) 213 460 710
info@duasnacoes.com
www.duasnacoes.com

HOTEL DUBLIN

Rua de Santa Marta, 45, Lisboa
T. (+351) 213 555 489
infodublin@residencialdublin.com
www.residencialdublin.com

HOTEL GAT ROSSIO

Rua Jardim do Regedor, 27-35, Lisboa
T. (+351) 213 478 300
hotelgatrossio@gatrooms.com
www.gatrooms.com

HOTEL IBIS LISBOA ALFRAGIDE

Alto Cabreira, Estrada Circunvalação,
Amadora
T. (+351) 217 625 090
h5270@accor.com
www.ibishotel.com

HOTEL IBIS LISBOA JOSÉ MALHOA

Av. José Malhoa, Lt. H, Lisboa
T. (+351) 217 235 700
h1668@accor.com
www.accorhotels.com

HOTEL IBIS LISBOA LIBERDADE

Rua Barata Salgueiro, 53, Lisboa
T. (+351) 213 300 630
h3137-gm@accor.com
www.accorhotels.com

HOTEL IBIS LISBOA SALDANHA

Av. Casal Ribeiro, 23, Lisboa
T. (+351) 213 191 690
h2117@accor.com
www.accorhotels.com

HOTEL INN ROSSIO

Rua 1.º de Dezembro, 73, Lisboa
T. (+351) 213 474 976
info@hotelamericano.com
www.hotelamericano.com

HOTEL LX ROSSIO

Rua da Assunção, 52, Lisboa
T. (+351) 213 423 131
info@insulana.net
www.insulana.net

HOTEL PORTUENSE

Rua das Portas de Santo Antão,
149-157, Lisboa
T. (+351) 213 464 197
info@hotelportuense.com
www.hotelportuense.com

LUXE HOTEL BY TURIM HOTÉIS

Rua Passos Manuel, 28, Lisboa
T. (+351) 213 182 010
luxehotel@turimhoteis.com
www.turimhoteis.com

SÃO PEDRO LISBON HOTEL

Rua Pascoal de Melo, 130, Lisboa
T. (+351) 213 578 765
rsaop.pedro@gmail.com
www.saopedrolisbonhotel.com

APARTHOTELS**ALTIS PRIME ******

Rua Rodrigo da Fonseca, 4, Lisboa
T. (+351) 210 456 000
reservations@altishotels.com
www.altishotels.com

ALTIS SUITES ****

Rua Castilho, 13, Lisboa
T. (+351) 210 456 101
reservations@altishotels.com
www.altishotels.com

ACCOMMODATION

HOTEL PESTANA CASCAIS ****

Av. Manuel Júlio Carvalho e Costa,
115, Guia, Cascais
T. (+351) 214 825 900
reception.cascais@pestana.com
www.pestana.com

REAL RESIDÊNCIA ****

Rua Ramalho Ortigão, 41, Lisboa
T. (+351) 213 822 900
book.lis@realhotelsgroup.com
realhotelsgroup.com/pt-pt/hotel/real-
residencia/

SHERATON CASCAIS RESORT *****

Rua das Palmeiras, Lote 5
Quinta da Marinha, Cascais
T. (+351) 214 829 100
info@sheratoncascais.com
www.sheratoncascais.com

"POUSADAS"

POUSADA DE CASCAIS

- CIDADELA

Cidadela de Cascais, Avenida Dom
Carlos I, Cascais
T. (+351) 214 814 300
guest@pousadas.pt
www.pousadas.pt

POUSADA DE LISBOA

- PRAÇA DO COMÉRCIO

Praça do Comércio, 31-34, Lisboa
T. (+351) 210 407 640
reception.pousadalisboa@pestana.com
www.pousadas.pt

POUSADA DO CASTELO

DE PALMELA

Castelo de Palmela, Palmela
T. (+351) 212 351 226
rececao.palmela@pousadas.pt
www.pousadas.pt

POUSADA PALÁCIO

DE QUELUZ HISTORIC HOTEL

Largo do Palácio Nacional, Queluz
T. (+351) 214 356 158
guest@pousadas.pt
www.pousadas.pt

OTHER

AS JANELAS VERDES ****

Rua das Janelas Verdes, 47, Lisboa
T. (+351) 213 968 143
jverdes@heritage.pt
www.heritage.pt

MARTINHAL CHIADO FAMILY

SUITES*****

Rua das Flores, 44, Lisboa
info@martinhal.com
www.martinhal.com

PALACETE CHAFARIZ D'EL REY

Travessa Chafariz D'el Rey, 6, Lisboa
T. (+351) 218 886 150
hotel.chafarizdelrei@unlockhotels.com
www.chafarizdelrei.com

SOLAR DO CASTELO ****

Rua das Cozinhas, 2, (Castelo), Lisboa
T. (+351) 218 870 909
solar.castelo@heritage.pt
www.heritage.pt

UPON LISBON PRIME RESIDENCES

Rua Luciana Stegagno Picchio, 12;
Urbanização Benfica Stadium, Lisboa
T. (+351) 211 549 640
reservas@uponlisbon.com
www.uponlisbon.com

VILLA ALBATROZ *****

Rua Fernandes Tomás, 1, Cascais
T. (+351) 214 863 410
info@villacascais.com
www.albatrozhotels.com

YOU AND THE SEA

Rua das Silvas, Ericeira
T. (+351) 261 243 370
info@youandthesea.pt
www.youandthesea.pt

CAMPING

LISBOA CAMPING & BUNGALOWS

Estrada Circunvalação, Lisboa
T. (+351) 217 628 200
info@lisboacamping.com
www.lisboacamping.com

ORBITUR COSTA DA CAPARICA

Av. Afonso de Albuquerque,
Quinta de Santo António,
Costa da Caparica
T. (+351) 212 901 366
infocaparica@orbitur.pt
www.orbitur.com

ORBITUR GUINCHO

Lugar de Areia, EN 247, 6, Cascais
T. (+351) 214 870 450
infoquincho@orbitur.pt
www.orbitur.com

LOCALACCOMMODATION

AZEITÃO ZEN – A CASA DA AREIA

Rua São João de Brito, Lote 110,
Brejos de Azeitão
T. (+351) 963 972 387
azeitaozen@gmail.com
azeitaozen.pt

LISBON ART STAY

Rua dos Sapateiros, 158, Lisboa
T. (+351) 211 931 646
info@lisbonartstay.com
www.lisbonartstay.com

MY SUITE LISBON

Rua São Boaventura, 23, Lisboa
T. (+351) 917 238 643
mslreservations@phchotels.pt
phchotels.pt

ONCE UPON A HOUSE IN ARRÁBIDA

EN 10 KM 33,5, Setúbal
T. (+351) 968 040 808
www.ouh.pt

QUINTA DO TAGUS

Quinta do Tagus, Costas de Cão,
Monte da Caparica
T. (+351) 212 954 359
quintadotagusvillage@gmail.com
www.quintadotagus.com

QUINTA DOS MACHADOS

- NATURE, LOVE & RELAX

Estrada Nacional 8, Barras,
Gradil - Mafra
T. (+351) 261 961 279
quintamachados@quintamachados.com
www.quintamachados.com

TERRA LUSO

Rua das Flores, 50, Rochaforte,
Cadaval
T. (+351) 915 398 498
terra.luso@gmail.com
www.terra-luso.com

TOREL PALACE LISBON

Rua Câmara Pestana, 23, Lisboa
T. (+351) 218 290 810
info@torelpalacelisbon.com
www.torelpalacelisbon.com

GUEST HOUSES

ALECRIM AO CHIADO

Rua do Alecrim, 73, Lisboa
T. (+351) 213 460 979
jng@ouh.pt
www.ouh.pt

CASA DO BAIRRO

Beco do Caldeira, 1, Lisboa
T. (+351) 914 176 969
info@shiadu.com
www.shiadu.com

CASINHA DA BOA HORA

Travessa da Boa Hora, 34, 4.º, Lisboa
T. (+351) 930 480 337
geral@casinhasdeportugal.com
www.casinhasdeportugal.com

CASINHA DAS FLORES

Rua das Flores, 105, 3.º Dto., Lisboa
T. (+351) 930 480 337
geral@casinhasdeportugal.com
www.casinhasdeportugal.com

CASINHA DOS SAPATEIROS

Rua dos Sapateiros, 44, Lisboa
T. (+351) 930 480 337
geral@casinhasdeportugal.com
www.casinhasdeportugal.com

ESPAÇO EDLA

Rua Dr. Alfredo da Costa, 52, Sintra
T. (+351) 925 970 131
espacoedlasintra@gmail.com
www.espacoedla.pt

FAMOUS CROWS GUESTHOUSE

Rua de Belém, 70, 1.º e 2.º, Lisboa
T. (+351) 939 890 903 / 960 169 831
geral@famous-crows.pt
www.famous-crows.pt

MY CHARM LISBON SUITES

Av. Almirante Reis, 106, 3.º Frt, Lisboa
T. (+351) 915 420 547
geral@mycharmllisbon.com
www.mycharmllisbon.com/pt/
Homepage.aspx

PALÁCIO DAS ESPECIARIAS GUESTHOUSE

Rua da Horta Seca, 11, Lisboa
T. (+351) 930 480 337
geral@casinhasdeportugal.com
www.casinhasdeportugal.com

RM GUEST HOUSE

Av. Luísa Tody
Rua Padre Silvestre Serrão, 8, Setúbal
T. (+351) 265 400 119
info@rmguesthouse.pt
www.rmguesthouse.pt

UNIVERSO ROMÂNTICO GUESTHOUSE & SPA

Rua Luciano Cordeiro, 72, Lisboa
T. (+351) 213 520 884
romantico.lisboa@gmail.com
www.universoromantico.com

WALLIS RATO

Av. Álvares Cabral, 3, 6.º, Lisboa
T. (+351) 969 193 627
info@wallis.pt
www.wallisholidays.pt

HOSTELS

BE LISBON HOSTEL INTENDENTE

Rua dos Anjos, 1F, Lisboa
T. (+351) 937 526 654
intendente@belisbonhostel.pt
www.belisbonhostel.pt

GOLDEN TRAM 242

LISBONNE HOSTEL
Rua Áurea, 242, Lisboa
T. (+351) 213 229 100
goldentram242.lisbonnehostel@gmail.com
www.goldentram242lisbonnehostel.com

LISBOA CENTRAL HOSTEL

Rua Rodrigues Sampaio, 160, Lisboa
T. (+351) 309 881 038
bookings@lisboacentralhostel.com
www.lisboacentralhostel.com

LISBON CHILLOUT HOSTEL

Rua Nogueira e Sousa, 8, 1.º, Lisboa
T. (+351) 212 468 450
lisbonchh@hotmail.com
www.lisbonchillouthostel.com

LISB'ON HOSTEL

Rua do Ataíde, 7A, Lisboa
T. (+351) 213 467 413
info@lisb-onhostel.com
www.lisb-onhostel.com

LIVING LOUNGE HOSTEL

Rua do Crucifixo, 116, 2.º, 3.º, 4.º, Lisboa
T. (+351) 213 461 078
info@livingloungehostel.com
www.livingloungehostel.com

LOST INN LISBON HOSTEL

Beco dos Apóstolos, 6, Lisboa
T. (+351) 213 470 755
info@lostinnlisbon.com
www.lostinnlisbon.com

THE INDEPENDENTE HOSTEL & SUITES

Rua de São Pedro de Alcântara, 81, Lisboa
T. (+351) 213 461 381
reservations@theindependente.pt
www.theindependente.pt

APARTMENTS

ALFAMA APARTMENT SERVICES

Rua Terreiro do Trigo, 92, Lisboa
T. (+351) 210 532 846
alfama.apartment.services@gmail.com

ALFAMA'S NEST

Av. Infante Dom Henrique, 311, sala 1, Lisboa
T. (+351) 211 935 541
apoio@embracetime.pt
www.embracetime.pt

ALMARIA EDIFÍCIO DA CORTE

Rua Ferragial, 11, Lisboa
T. (+351) 912 848 555
reservations@almaria.pt
www.almaria.pt

ALMARIA EDIFÍCIO EX LIBRIS

Rua da Misericórdia, 137, Lisboa
T. (+351) 912 848 555
reservations@almaria.pt
www.almaria.pt

ALMARIA EDIFÍCIO OFFICINA REAL

Rua do Loreto, 58, Lisboa
T. (+351) 912 848 555
reservations@almaria.pt
www.almaria.pt

BAIXA HOUSE

Rua dos Fanqueiros, 81 BH, Lisboa
 T. (+351) 919 090 895
 reservas@baixahouse.com
 www.baixahouse.com

BMYGUEST - SHORT TERM RENTAL

Av. da República, 45, 6.º, Esc.3, Lisboa
 T. (+351) 217 960 326
 geral@bmyguest.pt
 www.bmyguest.pt

CASAS DA BAIXA

Rua de São Julião, 23, Lisboa
 T. (+351) 911 030 950/ 913 954 927
 reservas@casasdabaixa.com
 www.casasdabaixa.com

CITY STAYS APARTMENTS

Praça Duque da Terceira, 11, Lisboa
 T. (+351) 912 849 320
 customerservice@city-stays.pt
 www.city-stays.pt

EMPORIUM LISBON SUITES

Rua dos Bacalhoeiros, 18, Lisboa
 T. (351) 926 674 391
 programa.citadino@gmail.com
 www.emporiumlisbonsuites.com

LE PREMIER LISBON SUITES

Av. Miguel Bombarda, 50, 2.º, Lisboa
 T. (+351) 910 230 269
 info@lepremierlisbonsuites.com
 www.lepremierlisbonsuites.com

FADOFLOTS

Travessa João de Deus, 12,
 Lisboa
 T. (+351) 213 432 364
 fadoflats@fadoflats.pt
 www.fadoflats.pt

GARVETUR

Av. Dom João II
 Edifício Panoramic, lote 1.19.03, 19 G
 Parque das Nações
 T. (+351) 213018 166
 lisboa@garvetur.pt
 www.garvetur.pt

HOMING

Largo do Rato, 7 A/B, Lisboa
 T. (+351) 211 578 349
 info@homing.com.pt
 www.homing.com.pt

LISBON BEST APARTMENTS

Rua da Trindade, 5, 1.º Dto., Lisboa
 T. (+351) 213 108 900
 reservations@lisbonbestapartments.com
 www.lisbonbestapartments.com

LISBON FIVE STARS

Rua da Moeda, 4, Lisboa
 T. (+351) 920 350 999
 reservations@lisbonfivestars.pt
 www.lisbonfivestars.pt

LV PREMIER APARTMENTS & VILLAS

Rua do Carmo, 43, 3C, Lisboa
 T. (+351) 211 335 743 /
 911 039 463 / 938 210 212
 book@lvpremier.com
 www.lvpremier.com

O QUINTO ESQUERDO

Av. Defensores de Chaves, 23,
 5.º Esq./Dto., Lisboa
 T. (+351) 918 019 421
 oquintoesquerdo@gmail.com

PANORAMICLIVING

Av. Dom João II, 53, Loja A, Lisboa
 T. (+351) 218 515 314
 info@panoramicliving.pt
 www.panoramicliving.pt

RESIDENCIAL LAR DO AREEIRO

Praça Francisco Sá Carneiro, 4, Lisboa
 T. (+351) 218 493 150
 info@residencialardoareeiro.com
 www.residencialardoareeiro.com

THE BLUE HOUSE LISBOA

Rua da Bica de Duarte Belo, 10, Lisboa
 T. (+351) 211 333 606
 thebluehouseslisboa@gmail.com
 www.thebluehouseslisboa.com

TRAVELLING TO LISBON

Av. 24 de Julho, 4 B, Armazém 6,
 Lisboa
 T. (+351) 218 886 072
 ttl@travelingtolisbon.com
 www.travelingtolisbon.com

YOUR LISBON FLAT

Rua Manuel Bernardes, 3, 1.º Dto., Lisboa
 T. (+351) 915 895 015
 reservations@yourlisbonflat.com
 www.yourlisbonflat.com

OTHER LOCAL ACCOMMODATION**RESIDENCIAL DOM JOÃO**

Rua José Estevão, 43, Lisboa
 T. (+351) 213 140 422
 reservas.residencialdomjoao@gmail.com
 www.domjoaolisboa.com

RESIDENCIAL HORIZONTE

Av. António Augusto Aguiar, 42, Lisboa
 T. (+351) 213 539 526
 residehorizonte@netcabo.pt
 www.hotelhorizonte.com

LUGGAGE STORAGE**BOUNCE**

Rua de São Bento, 35, Lisboa
 T. (+351) 933 052 805
 office@usebounce.com
 https://usebounce.com/city/lisbon

LISBON SHOP 2**Temporarily closed**

Rua Jardim do Regedor, 50, Lisboa
 T. (+351) 910 518 030
 regedor@lismarketing.pt
 www.visitlisboa.com

LUGAGGE @ CITY CENTER

Rua da Misericórdia, 14, Loja 27, Lisboa
 T. (+351) 213 470 585 /
 962 330 645
 henry@luggageatcitycenter.com
 www.luggageatcitycenter.com

LUGGAGE STORAGE LISBON

Rua do Alecrim, 26, R/C, Lisboa
 T. (+351) 213 471 458
 info@luggagestoragelisbon.com
 www.luggagestoragelisbon.com

PICKUP LUGGAGE

Rua Cidade de Nampula, 2A, Lisboa
 T. (+351) 218 511 351
 info@pickupluggage.com
 www.pickupluggage.com

BY BUS

BARRAQUEIRO TRANSPORTES

Av. Santos e Castro, Lisboa
T. (+351) 217 511 600
rodest@rodest.pt
www.barraqueirotransportes.pt

CARRISTUR

LISBOA CARD PARTNER

Open-top double-decker buses and antique trams, accompanied by multilingual commentary. Daily.
T. (+351) 213 613 193
geral@carristur.pt
www.carristur.pt

REDE NACIONAL DE EXPRESSOS

Praça Marechal Humberto Delgado, Estrada das Laranjeiras, Lisboa
T. (+351) 213 581 472
financeira@rne.pt
www.rede-expressos.pt

OUTSIDE LISBOA

SCOTTURB

Rua de São Francisco, 660, Adroana, Alcabideche, Cascais
T. (+351) 214 699 100
scotturb@scotturb.com
www.scotturb.com

BY TRAIN

FERTAGUS

LISBOA CARD PARTNER

Estação do Pragal, porta 23, Almada
T. (+351) 211 066 302
fertagus@fertagus.pt
www.fertagus.pt

TRANSPORT WITH DRIVER

AMIROAD – LUXURY TRANSPORTS

Rua Professor Abel Salazar, Lote 7, São João Talha
T. (+351) 914 075 830
amiroad@amiroad.pt
www.amiroad.pt

BEDRIVEN

Av. Severiano Falcão, 3, Prior Velho
T. (+351) 220 102 268
reservas@choicecar.pt
www.bedriven.pt

CAR2U

Rua Eng. Nobre Guedes 19, 6.º Esq., Lisboa
T. (+351) 938 143 583
rp@car2u.pt
www.car2u.pt

COIMBRA AIRPORT SHUTTLE

Parque Industrial de Taveiro, lote 8, Taveiro
T. (+351) 304 505 304
coimbra@airportshuttle.pt
www.airportshuttle.pt

FREDBUS

Estrada da Circunvalação, Lote 15A, Loja 2, Lisboa
T. (+351) 213 879 302
fredauto@fredauto.com
www.fredauto.com

GOLD COMPASS

Rua de Entrecampos, 30A, Lisboa
T. (+351) 910 275 640
bookings@goldcompass.pt
www.goldcompass.pt

GOLD LIMOUSINE

Av. Almeida Garrett, 4, Alfragide
T. (+351) 919 398 004
info@goldlimousine.pt
www.goldlimousine.pt

JETLIMO

Rua Eng.º Manuel Rocha, Edif. Brasil, Loja 6, Lisboa
T. (+351) 218 459 370
mail@jetlimo.pt
www.jetlimo.pt

LIMOUSINES.PT

Rua de São Domingos à Lapa, 101, Lisboa
geral@limousines.pt
www.limousines.pt

LIMOUTRAVEL CHAUFFER SERVICE

Rua Dom João II, 20, 1.º, Queluz de Baixo
T. (+351) 967 001 700
limoutravel@gmail.com
www.limoutravel.com

LISBON FANCYTOUR

Alameda dos Oceanos, 91, 0 A, Lisboa
T. (+351) 964 829 610
info@lisbonfancytour.pt
www.lisbonfancytour.pt

LUGGIT

Luggage transfers.
hello@luggit.app
luggit.app

PRIVATELANE

Quinta da Bela Vista, 7B, R/C, Frielas
T. (+351) 915 224 064
info@privatelane.pt
www.privatelane.pt

SPECIALIMO TRAVEL GROUP

Azinhaga dos Lameiros, 15, Armazém 3A, Lisboa
T. (+351) 217 552 861
info@specialimo.com
www.specialimo.com

SMARTBUS

Rua José Travassos, 15 B, Lj 1600-410, Lisboa
T. (+351) 919 598 010
geral@smartbus.pt
www.smartbus.pt

TEMPO VIP - VOLTARUS

Rua do Açúcar, 76, Armazém 8, Lisboa
T. (+351) 918 328 179
geral@tempovip.com
www.tempovip.com

TETRA RÁPIDO

Rua Leite de Vasconcelos, 72B, Lisboa
T. (+351) 962 613 065
tetrarapido@gmail.com

TOUR-LINE

Rua Martin Luther King, 5C, Lisboa
T. (+351) 933 658 491
geral@tour-line.pt
www.tour-line.pt

RENT A CAR

AVIS BUDGET GROUP EMEA

Av. Severiano Falcão, 9, Prior Velho
T. (+351) 217 547 800
marketing@avis-portugal.pt
www.avis.com.pt

CAEL

Rua Braamcamp, 52A, Lisboa
T. (+351) 213 839 700
rentacar@cael.pt
www.cael.pt

HARLEY-DAVIDSON LISBOA

Rua Vítor Hugo, 16F, Lisboa
T. (+351) 219 156 790
comercial@hdlisboa.com
www.hdlisboa.com

HERTZ

Av. Severiano Falcão, 7-7A,
Prior Velho
T. (+351) 219 426 300
reservas@hertz.pt
www.hertz.pt

OLIVAUTO

Av. São João de Deus, 37A, Lisboa
T. (+351) 218 414 000
geral@olivauto.pt
www.olivauto.pt

PORTUGALRENT

Rua Professor Moisés Amzalak, 4,
A/B/C, Lisboa
T. (+351) 217 169 388
reservas@portugalrent.com
www.portugalrent.com

SIXT RENT-A-CAR

Av. Severiano Falcão, Lote 2, Fração C
Edifício Ambiente, Prior Velho
reservations@sixt.pt
www.sixt.pt

VERMATIS

Av. do Brasil, 92 C, Lisboa
T. (+351) 938 388 844
vermatis.lisbon@gmail.com
vermatis.negócio.site

OTHERS**BIKEIBERIA**

Largo do Corpo Santo, 5, Lisboa
T. (+351) 213 470 347/969 630 369
info@bikeiberia.com
www.bikeiberia.com

COOLTRA

Rua da Madalena, 216, Lisboa
T. (+351) 912 524 241
info@cooltra.com
www.cooltra.com

LISBON POINT

Rua dos Bacalhoeiros, 14D, Lisboa
T. (+351) 924 478 387
info@lisbonpoint.com
www.lisbonpoint.com

MOTOEXPLORERS

Rua Francisco Lyon de Castro, 14C,
Lisboa
T. (+351) 210 143 101
mail@motoexplorer.com
www.motoexplorers.com

PARKING**CAÇADA DO COMBRO**

Caçada do Combro, 70-78, Lisboa
T. (+351) 211 163 060
www.emel.pt

PORTAS DO SOL

Beco de Sta. Helena, Miradouro
das Portas do Sol, Alfama, Lisboa
T. (+351) 211 163 060
www.emel.pt

CHÃO DO LOUREIRO

Largo da Atafona e Calçada Marquês
de Tancos, Lisboa
T. (+351) 211 163 060
www.emel.pt

BY AIR**EXQUISITE TRIPS**

Praceta Ferreira Borges, 10, R/C Esq.,
Amadora
T. (+351) 968 701 497
virtuousland2022@gmail.com
www.exquisite-trips.com

LISBON HELICOPTERS

Passeio Marítimo de Algés, Heliporto
(near the air control tower), Algés
T. (+351) 962 966 834/917 225 995
info@lisbonhelicopters.com
www.lisbonhelicopters.com

BY BOAT**À GRANDE-WATER X WATER**

Experiences in Portugal
Doca de Santo Amaro, Armazém 3,
Lisboa
T. (+351) 214 668 808
reservas@waterx.co.pt
www.waterx.co.pt

À VELA PASSEIOS

Doca Recreio das Fontainhas, Setúbal
T. (+351) 966178 529
avelapasseios@gmail.com
www.avelapasseios.com

ANTHIA DIVING CENTER

Porto de Abrigo de Sesimbra, Loja 1,
Sesimbra
T. (+351) 212 443 472
info@anthiadiving.com
www.anthiadiving.com

AQUARAMA

Porto de Abrigo de Sesimbra
T. (+351) 965 263 157
info@aquarama.com
www.aquarama.com

BARCO CONFEITARIA NACIONAL

Cais da Princesa
(near Torre de Belém), Lisboa
T. (+351) 911 798 595
info@confeitarianacional.com

BOATCENTER

Trem Naval Santa Catarina, Edif.
Boatcenter, EN 10-4, Setúbal
T. (+351) 212 387 066
info@boatcenter.pt
www.boatcenter.pt

CARRISTUR**LISBOA CARD PARTNER**

T. (+351) 213 613 193
www.yellowbustours.com

DREAMBOATS

Rua Dr. Pereira Coutinho, 474 B,
Amoreira, Alcáideche
T. (+351) 914 256 002
dreamboats@dreamboats.com.pt
www.dreamboats.com.pt

FRS**LISBOA CARD PARTNER**

Av. da Liberdade, 38, 2.º, Lisboa
T. (+351) 210 201 565
info@frs-portugal.pt
www.frs-portugal.pt

GO FISHING PORTUGAL

Almada Business Center
Rua Marcos de Assunção,
7 E, Almada
T. (+351) 212 742 292
info@gofishing.pt
www.gofishing.pt

HALIOTIS

Casal da Ponte, Atouguia da Baleia,
Peniche
T. (+351) 262 781 160
peniche@haliotis.pt
www.haliotis.pt

HIPPOTRIP**LISBOA CARD PARTNER**

Rua do Açúcar, 76,
Armazém 23, Lisboa
T. (+351) 211 922 030
info@hippotrip.com
www.hippotrip.com

LISBOAT**LISBOA CARD PARTNER**

Hop on Hop off no Tejo
Cais de Embarque/Desembarque
Cais da Princesa
(near Torre de Belém)
Cais do Sodré (Terminal Fluvial)
T. (+351) 918 374 808
elvira.ramos@miraclehorizon.pt

LISBON BY BOAT**LISBOA CARD PARTNER**

Doca de Belém, Lisboa
T. (+351) 933 914 740/1/2/3
lisbonbyboat@gmail.com
www.lisbonbyboat.com

NOSSO TEJO - LISBON**TRADITIONAL BOAT TOURS****LISBOA CARD PARTNER**

Estação Sul e Sueste
Av. Infante Dom Henrique, 1B, Lisboa
T. (+351) 910 501 012
info@nossotejo.pt
www.nossotejo.pt

LISBON SIGHT SAILING

Doca do Bom Sucesso, Belém
T. (+351) 216 051 078
info@lisbonsightsailing.com
www.lisbonsightsailing.com

OCEANSCAPE

Travessa da Horta, 6, Lisboa
T. (+351) 935 279 577
ines@oceanscape.pt
www.oceanscape.pt

PACIFICO CRUISES

Av. D. Dinis 68-A, C.C. Oceano,
Loja 75, Odivelas
T. (+351) 925 131 456
pacificocruises.reservas@gmail.com
www.pacificocruises.pt

PALMAYACHTS**LISBOA CARD PARTNER**

Av. Brasília - Doca de Belém, Lisboa
T. (+351) 937 065 280
info@palmayachts.pt
www.palmayachts.pt

PORTUGAL DIVE

Av. Estados Unidos da América, 2,
Porta 3, 2.ªA, Lisboa
T. (+351) 964 643 858
arlindo.serrao@portugaldive.com
www.portugaldive.com

ROTAS DO SAL

Tróia
T. (+351) 938 122 190
info@rotasdosal.pt
www.rotasdosal.pt

SADO ARRÁBIDA**LISBOA CARD PARTNER**

CCI N.º 3700, Carrasqueira, Comporta
T. (+351) 919 558 535
geral@sadoarrabida.pt
www.sadoarrabida.pt

SEAE0-TOURS**LISBOA CARD PARTNER**

Av. Brasília, Doca de Santo Amaro,
Gate 3, Lisboa
T. (+351) 919 195 486
info@seae0-tours.pt
www.seae0-tours.pt

SEALIFE LOVERS

Rua Fran Pacheco, 62, Setúbal
T. (+351) 265 418 935
geral@sealifelovers.com
www.sealifelovers.com

SEAVENTY

Rua Marcelino Mesquita, 11,
Alto de Santa Catarina, Linda-a-Velha
info@seaventy.pt
www.seaventy.pt

SEAVIEW NAUTICAL EVENTS

Pátio Alfacinha, Rua do Guarda Jóias,
44, Lisboa
T. (+351) 962 444 919
info@seaview.pt
www.seaview.pt

SETÚBAL ALIVE**LISBOA CARD PARTNER**

Av. Baía de Setúbal, Doca das
Fontainhas, Setúbal
T. (+351) 967 622 469
setubalalive@gmail.com
www.setubalalive.com

TAGUS CRUISES

Edifício Vela Latina, Loja 10 (ext),
Doca do Bom Sucesso, Lisboa
T. (+351) 925 610 034
taguscruises@taguscruises.com
www.taguscruises.com

TRULY AMAZING

Praceta João Villaret, 1,
Costa de Caparica
T. (+351) 964 015 415
geral@trulyamazing.pt
trulyamazing.pt

VERTIGEM AZUL**LISBOA CARD PARTNER**

Rua Praia da Saúde, 11D,
Loja 10, Setúbal
T. (+351) 265 238 000
vertigemazul@mail.telepac.pt
www.vertigemazul.com

YACHT OCEAN CLUB

Rua da Azinheira, Banda C, 207, Troia
T. (+351) 937 614 223
geral@yachtocceanclub.pt
yachtocceanclub.pt

WILD CAT

T. (+351) 212 439 281
info@veltagus.com
www.veltagus.com

BY ROAD**ABC TRAVEL**

Praceta Coelho Seabra, 4, Damaia
T. (+351) 918 206 330
info@abctravel.pt
www.abctravel.pt

ACC TOURS

Rua Alexandre Braga, 29, 3.º Esq.,
Lisboa
T. (+351) 912 892 897
info@acctours.pt
www.acctours.pt

GET TO KNOW LISBOA

ALFACINHA LX

T. (+351) 924 042 059
info@alfacinhalx.com
www.alfacinhalx.com

AROUND LISBON

Rua 1.º de Maio, 22, Buraca
T. (+351) 963 934 487
info@aroundlisbon.pt
www.aroundlisbon.pt

BADGER TOURS

Estrada Nacional, 379, Lisboa
T. (+351) 212 686 001
badger.tours@texugauto.com
www.texugauto.com

BIKES&COMPANY

Rua dos Douradores, 16, Lisboa
T. (+351) 210 965 030
reservations@boostportugal.com
www.bikes-company.com

BIRDS & NATURE TOURS

Birdwatching Tours
T. (+351) 913 299 990
booking@birds.pt
www.birds.pt

BSLDRIVERS

Rua Paz, 5A, Loures
T. (+351) 963 199 993
geral@memoriasemuralhas.pt
www.memoriasemuralhas.pt

BY MORAZZO TOURS

Travessa da Padeira, 2, Assafora,
São João das Lampas
T. (+351) 918 507 885
bymorazzotours@gmail.com

CAMINHANDO

Rua da Ribatejana, 7, A-de-Freire
T. (+351) 966 589 269
joserodrigues@caminhando.pt
www.caminhando.pt

CARAMELA

Rua Herminio Cardoso Guerra, CCI,
1104, Lagoa do Calvo
T. (+351) 969 467 974
merceariacaramela@gmail.com

CELINA TOURS

Av. Estados Unidos da América,
142, 1.º Dto., Lisboa
T. (+351) 919 946 213
info@celina-tours.com
www.celina-tours.com

CITYRAMA & GRAY LINE

LISBOA CARD PARTNER
Rua Forças Armadas, Lote 21,
Camarate
T. (+351) 213 191 090
circuitos@cityrama.pt
www.cityrama.com

COMBOIO TURÍSTICO DE SINTRA

Volta do Duche, Sintra
T. (+351) 918 258 001
geral@comboiodesintra.pt
www.comboiodesintra.pt

COOLTOUR LISBON

LISBOA CARD PARTNER
Travessa Miguel Verdial, 14 B, Lisboa
T. (+351) 91452 09 56
info.lisbon@thecooltours.com
www.thecooltours.com

DISCOVER LISBON

Rua da Atalaia, 204, Lisboa
T. (+351) 933 483 634
info@discoverlisbon.org
www.discoverlisbon.org

DIVE CLUB CIPREIA

Edifício Clube Naval
– Porto de Abrigo, Sesimbra
T. (+351) 218 435 580
info@diveclubcipreia.com
www.diveclubcipreia.com

DOURO ACIMA

LISBOA CARD PARTNER
Rua Professor Henrique de Barros,
9C e 9D, Prior Velho
T. (+351) 222 006 418
geral@douroacima.pt
www.douroacima.pt

ECO TUK TOURS

Rua dos Douradores, 16, Lisboa
T. (+351) 914 925 450 / 914 925 472
info@ecotuktours.com
www.ecotuktours.com

ESSÊNCIA DA LATITUDE

Rua Paul Harris, 3, 2.º C, Lisboa
T. (+351) 938 164 042
geral@essenciadalatitude.com
www.essenciadalatitude.com

ESTRELA D'ALVA TOURS

LISBOA CARD PARTNER
Av. da República, 97, R/C, Lisboa
T. (+351) 967 852 921
filomena.farinha@estreladalva.pt
www.estreladalva.pt

GO TO GO - TOURS

Rua Prof. Mira Fernandes,
11 R/C Esq., Lisboa
T. (+351) 963 366 006
gotogolisbon@gmail.com

HI LISBON WALKING TOURS

Largo Professor Pulido Valente, 16,
2.º Esq., Linda-a-Velha
T. (+351) 939 102 917
hilisbonwalkingtours@gmail.com
www.hilisbonwalkingtours.com

INSIDE LISBON TOURS

LISBOA CARD PARTNER
Campo Pequeno, 48, 6.º Dto., Lisboa
T. (+351) 211 914 545
info@insidelisbon.com
www.insidelisbon.com

LIMOUTOURS

Rua 25 de Abril, 12,
Bairro dos Marinheiros, Setúbal
T. (+351) 917 720 565
limoutours@gmail.com

LIMOUTRAVEL CHAUFFER SERVICE

Rua D. João II, 20,1.º, Queluz de Baixo
T. (+351) 967 001 700
limoutravel@gmail.com
www.limoutravel.com

LISAWAY TOURS & RENT

Rua do Cais de Santarém, 28 R/C,
Lisboa
T. (+351) 963 263 141
lisawaytours@gmail.com

LISBOA TOURS PASSEIOS TURISTICOS

Rua Prof. Agostinho da Silva, 3, 2ª
Cave Dir., Mem Martins, Sintra
T. (+351) 962 807 223
info@lisboatours.com.pt
www.lisboatours.com.pt

LISBOA AUTÉNTICA

Rua de São Julião, 12, 1.º Frente,
Lisboa
T. (+351) 913 221 790
info@lisboaautentica.com
www.lisboaautentica.com

LISBON BIKE TOUR & OUTDOORS

Largo Ana de Castro Osório,
1, 1.º D, Caxias
T. (+351) 912 272 300
info@lisbonbiketour.com
www.lisbonbiketour.com

LISBON BY SEGWAY

Rua dos Douradores, 16, Lisboa
T. (+351) 210 965 030
lisboa@lisbonbysegway.com
www.lisbonbysegway.com

**LISBON DESTINATION TOURS
LISBOA CARD PARTNER**

Largo Duque do Cadaval, 17, Lisboa
T. (+351) 210 997 735 /
914 860 702
info@lisbondestinationtours.com
www.lisbondestinationtours.com

**LISBON WALKER
LISBOA CARD PARTNER**

Rua do Jardim do Tabaco, 126,
Sobreloja, Lisboa
T. (+351) 218 861 840
info@lisbonwalker.com
www.lisbonwalker.com

**LITTLE LISBON
– LISBON FOR KIDS**

Rua Henrique Alves, nº 1, 1.º C, Lisboa
T. (+351) 912 800 647
info@lisbonforkids.com
www.lisbonforkids.com

LOCAL TUK TUK

Edifício Aviz, Av. Fontes Pereira de
Melo, 35, 4.º A, Lisboa
T. (+351) 210 118 282
F. (+351) 212 460 971
lisboa@localtuktuk.com
www.localtuktuk.com

MADN TOURS

Rua Quinta do Jacinto 23, 3.º Dto.,
Lisboa
T. (+351) 934 177 531
info@touritalianolisbona.com
www.touritalianolisbona.com

MY LISBON TOURS

Av. Óscar Monteiro Torres, 60, 2D,
Lisboa
T. (+351) 910 874 714
info@mylisbontours.com
www.mylisbontours.com

NATURWAY

LISBOA CARD PARTNER
Rua Professor Eduardo Araújo Coelho,
4, Estúdio B, Lisboa
T. (+351) 213 918 090
geral@naturway.pt
www.naturway.pt

ONCE UPON A DAY

EN 10 KM 33,5, Setúbal
T. (+351) 213 254 040
estevalda@gmail.com

ORIGINAL LISBON TOURS

Travessa dos Lagares, 16, 2.º, Lisboa
T. (+351) 916 060 768
originalxtours@gmail.com
www.lisbon-chillout-freetour.com

PIC MY DAY

Rua Viriato, 27, 5.º C, Lisboa
T. (+351) 213 521 100
geral@picmyday.pt
www.picmyday.pt

PORTUGAL ROTAS E TOURS

Azinhaga dos Lameiros,
15, Armazém 3A, Lisboa
T. (+351) 217 552 861
tours@portugalrotasetours.com
www.portugalrotasetours.com

PORTUGAL EXPERT

T. (+351) 912 991 664
info@portugalexpert.pt
portugalexpert.pt/

PORTUGUESE FOR A DAY TOURS

Rua David Lopes, 29, R/C Esq., Lisboa
T. (+351) 913 958 803
info@portugueseforalldaytours.com
www.portugueseforalldaytours.com

SAL

Av. Bento Gonçalves 9, 2.º Esq., Setúbal
T. (+351) 919 361 725
sal@sal.pt
www.sal.pt

SALAMALEQUES

Rua Jorge Nunes, 2, Sesimbra
T. (+351) 212 231 724
geral@salamaleques.pt
www.salamaleques.pt

SANDEMANS NEW EUROPE TOURS

Rua Arco Marquês Alegrete, 2
Palácio dos Aboim
1100-034 Lisboa
info@neweuropetours.eu
www.newlisbontours.com

SEGWAY TEJO

Rua das Olarias, 35, Lisboa
T. (+351) 964 483 321
segwaytejo@tejourism.pt
www.tejourism.pt

SELECTION TOURS

LISBOA CARD PARTNER
Rua Tierno Galvan, 9, Lisboa
T. (+351) 965 802 459
tours@selectiontours.com
www.selectiontours.com

SITGO

Rua Mário Dionísio, 9A, Lisboa
T. (+351) 936 127 609
operations@sitgo.pt
www.sitgo.pt

SMARTBUS

Rua José Travassos, 15 B, Lisboa
T. (+351) 919 598 010
geral@smartbus.pt
www.smartbus.pt

SMART SIGHTSEEING

Rua do Comércio, 170, Lisboa
T. (+351) 913 912 163
info@smartsightseeing.pt
www.smartsightseeing.pt

SPINACH TOURS

Rua do Crucifixo, 86, 3.º Dto, Lisboa
T. (+351) 213 461 206
spinach@spinach.global

TÁ NO IR

Estrada do Macieira, 2,
C/V Esq., Sintra
T. (+351) 969 051 959
geral@tanoir.com.pt
www.tanoir.com.pt

TAKE LISBOA FREE TOURS

Rua João do Outeiro, 58 R/C, Lisboa
T. (+351) 914 059 080
hello@takefreetours.com
www.takefreetours.com

TEJO TOURS

Rua das Olarias, 35, Lisboa
T. (+351) 964 483 321
tejotours@tejourism.pt
www.tejourism.pt

TIME TRAVELLERS

Av. General Roçadas, 157,
8.º, Lisboa
T. (+351) 965 107 138
geral@timetravellers.pt
www.timetravellers.pt

GET TO KNOW LISBOA

TOURS OF MY LIFE

Av. Rio de Janeiro, 18, 1.º Dto, Lisboa
T. (+351) 912 816 661
toursofmylife.lisbon@gmail.com
www.toursofmylife.com

TUGATRIPS

Rua Vale da Carrasqueira,
9, 3.º, Ericeira
T. (+351) 911 146 146
geral@tugatrips.com
www.tugatrips.com

TUKGUIDE PORTUGAL

LISBOA CARD PARTNER

Rua do Instituto Industrial, 18, Lisboa
T. (+351) 919 920 000
reservas@tukguideportugal.pt
www.tukguideportugal.pt

TUK TUK TEJO

Rua das Olarias, 35, Lisboa
T. (+351) 964 483 321
tuktuktejo@tejotourism.pt
www.tejotourism.pt

TUPER

Rua Almirante Barroso,
13, 2.º, Lisboa
T. (+351) 213 511 750
geral@tuper.pt
www.tuper.pt

UBTUK

Calçada da Tapada 110, 1.º Esq.,
Lisboa
T. (+351) 933 302 666
hugofranco@rbridge.pt
www.ubtuk.pt

VANELLUS

Rua Marcelino Mesquita, 11, Loja 4,
Escritório 1, Linda-a-Velha
T. (+351) 213 632 048
vanellus.geral@gmail.com
vanellus.pt

VERTENTE NATURAL

LISBOA CARD PARTNER

Apartado 1077, Santana, Sesimbra
T. (+351) 210 848 919
info@vertentenatural.com
www.vertentenatural.com

VOX CITY TOURS

LISBOA CARD PARTNER

Rua dos Douradores, 16, Lisboa
T. (+351) 925 549 106
vox@boostportugal.com
www.portugalcitytours.com

WALKBOX SELF-GUIDED TOURS

Alameda Alto da Barra, 32, Oeiras
T. (+351) 916 193 008
hello@walkboxapp.com
www.walkboxapp.com

WEEKEND TREASURE

Rua Almirante Sarmiento Rodrigues, 6,
7.ºB, Lisboa
T. (+351) 917 067 679
info@weekendtreasure.pt
www.weekendtreasure.pt

WELCOME MADEIRA

Rua Prof. Henrique de Barros,
9C-9D, Lisboa
T. (+351) 225 100 529
geral@welcomemadeira.pt
www.welcomemadeira.pt

WE WORK LIFE

Rua José Lopes Casquilho, Cond.
Cerrado da Eira, Casa 4, Murteira,
Loures
T. (+351) 916 655 075
juliogouveia_2@hotmail.com
www.lifetravel.pt

SURF

SURF PRO SURF SCHOOL

Praia da Mata/Praia do Norte,
Costa da Caparica
T. (+351) 939 219 023
surfprosurfschool@gmail.com
www.surfpro.pt

OTHER SPORTS

OFFROAD CENTER BIANCHI PRATA

Rua 13 de Maio, Carregado
T. (+351) 911 564 347
offroadcenter_carregado@
bianchiprata.com
www.bianchiprata.com

ACADEMIA DE GOLFE DE LISBOA

Azinhaga das Galhardas, Lisboa
T. (+351) 217 960 108
www.academiadegolfedelisboa.pt

CLUBE DE GOLFE DO PAÇO DO LUMIAR

Rua Formozinho Sanchez, 79, Lisboa
T. (+351) 217 591 719
www.golfepacodolumiar.pt

OUTSIDE LISBOA**BELAS CLUBE DE CAMPO**

Alameda do Aqueduto, Club House, Belas
T. (+351) 219 626 640
www.belasclubedecampo.pt

CAMPO DE GOLFE DO MONTADO

Urbanização Golfe do Montado, Algeruz, Palmela
T. (+351) 265 708 150
www.montadoresort.com

AROEIRA PINES CLASSIC E AROEIRA CHALLENGE

Herdade da Aroeira, Charneca da Caparica
T. (+351) 212 979 110
www.aroeira.com

CLUBE DE GOLFE DA QUINTA DA MARINHA

Quinta da Marinha, Rua Clube, Casa 36, Cascais
T. (+351) 214 860 180
www.quintadamarinha.com

DOLCE CAMPO REAL

Dolce Campo Real, Rua do Campo, Turcifal
T. (+351) 261 960 900
www.dolcecamporeal.com

GOLF ALDEIA DOS CAPUCHOS

Largo Aldeia dos Capuchos, Costa da Caparica
T. (+351) 212 909 046
golf@cpcaparicalisbon.com
www.golfaldeiadoscapuchos.com

GOLF DO ESTORIL

Av. da República, Estoril
T. (+351) 214 680 176
www.palacioestorilhotel.com

GUARDIAN SUCESSO GOLF

Bom Sucesso, Vau, Óbidos
T. (+351) 262 965 310
www.guardiangolf.net

LISBON SPORTS CLUB

Casal da Carregueira, Belas
T. (+351) 214 310 077
www.lisbonclub.com

OEIRAS GOLF E RESIDENCE

Av. Casal de Cabanas, Lote 140, Barcarena
T. (+351) 965 002 755
www.orizontegolf.com

OITAVOS DUNES - NATURAL LINKS GOLF

Quinta da Marinha, Casa da Quinta, 25, Cascais
T. (+351) 214 860 000
www.oitavosdunes.pt

PENHA LONGA GOLF

Campo Atlântico
Estrada da Lagoa Azul, Linhó, Sintra
T. (+351) 219 249 031
www.penhalonga.pt

PESTANA BELOURA GOLFE

Rua das Sesmarias, 3, Quinta da Beloura
T. (+351) 219 106 350
www.pestanagolf.com

PRAIA D'EL REY GOLF & BEACH RESORT

Av. Dona Inês de Castro, 1, Vale das Janelas, Amoreira, Óbidos
T. (+351) 262 099 587
www.praia-del-rey.com

QUINTA DO PERU GOLF & COUNTRY CLUB

Alameda da Serra, 2, Quinta do Conde, Sesimbra
T. (+351) 212 134 320
quintadoperu@reformosa.com
www.clubgolfquintadoperu.com

RIBAGOLFE LAKES E RIBAGOLFE OAKS

Vargem Fresca, EN 119, Infantado Samora Correia
T. (+351) 263 930 040
www.ribagolfe.pt

ROYAL ÓBIDOS GOLFE RESORT

Cabeço da Serra, Vau, Óbidos
T. (+351) 262 960 241
www.royalobidos.com

TROIAGOLF CHAMPIONSHIP COURSE

Tróia Golf, Carvalhal, Tróia
T. (+351) 265 494 024
www.troiagolf.com

WESTCLIFFS

Av. Inês de Castro, 1, Óbidos,
T. (+351) 262 905 152
www.westcliffs.com

SHOPPING

SHOPPING CENTERS AND DEPARTMENT STORES

AMOREIRAS SHOPPING CENTER LISBOA CARD PARTNER

Av. Engenheiro Duarte Pacheco,
Lisboa
T. (+351) 213 810 200
www.amoreiras.com

ARMAZÉNS DO CHIADO

Rua do Carmo, 2, Lisboa
T. (+351) 213 210 600
armazensdochiado@multi.eu
www.armazensdochiado.com

CASA DA GUIA

Estrada Nacional 247,
Quinta São José da Guia, Cascais
T. (+351) 214 843 215
www.casadaguaia.com

CENTRO COLOMBO

Av. Lusíada, Lisboa
T. (+351) 217 113 636
www.colombo.pt

CENTRO COMERCIAL CAMPO PEQUENO

Centro Lazer Campo Pequeno, Lisboa
T. (+351) 217 998 450
galeriacomercial@campopequeno.com
www.campo Pequeno.com

CENTRO VASCO DA GAMA

Av. Dom João II, 40, Lisboa
T. (+351) 218 930 600
centrovascodagama@sonaesierra.com
www.centrovascodagama.pt

EL CORTE INGLÉS DEPARTMENT STORES LISBOA CARD PARTNER

Av. António Augusto de Aguiar, 31,
Lisboa
T. (+351) 213 171 700
relacoespublicas@elcorteingles.pt
www.elcorteingles.pt

FREEPORT LISBOA FASHION OUTLET LISBOA CARD PARTNER

Av. Euro 2004, Alcochete
T. (+351) 212 343 501
freeport.info@viaoutlets.com
www.freeportfashionoutlet.pt

GASTRONOMY AND WINES

ADEGA MÃE

Estrada Nacional 8, Carvalhal,
Torres Vedras
T. (+351) 261 950 100
geral@adegamae.pt
www.adegamae.pt

CASA CADAVAL

Rua Vasco da Gama, Muge
T. (+351) 243 588 040
geral@casacadaval.pt
www.casacadaval.pt

CASA SANTOS LIMA

Quinta da Boavista, Aldeia Galega
da Merceana, Alenquer, Torres Vedras
T. (+351) 263 760 621
geral@casasantoslima.com
www.casantoslima.com

COMISSÃO VITIVINÍCOLA DA REGIÃO DE LISBOA

Rua Cândido dos Reis, 1,
Torres Vedras
T. (+351) 261 316 724
cvr.lisboa@mail.telepac.pt
www.vinhosdelisboa.com

COMISSÃO REGIONAL DE VINHOS DA PENÍNSULA DE SETÚBAL

BlueBiz – Parque Empresarial da
Península de Setúbal, Estrada Vale
da Rosa, Edifício VII, R/C e Piso 1,
Ala Nascente, Setúbal
T. (+351) 212 337 100 /
212 337 108
geral@cvr-psetubal.com
www.vinhosdapeninsuladesetubal.org

FILIFE PALHOÇA VINHOS

E.N. 5, KM 24.8, CCI 6520, Quinta da
Invejosa, Poceirão
T. (+351) 265 995 886
geral@filipepalhoca.pt
www.filipepalhoca.pt

GARRAFEIRA NACIONAL

Rua de Santa Justa, 18, Lisboa
T. (+351) 218 879 080
info@garrafeiranacional.com
www.garrafeiranacional.com

MANZWINE

Largo da Praça, 8A, Cheleiros
T. (+351) 214 269 710
info@manzwine.com
www.manzwine.com

QUINTA DE SANT'ANA

Rua Direita, 3, Gradil, Mafra
T. (+351) 261 963 550
geral@quintadesanta-na.com
www.quintadesantana.com

QUINTA DO SANGUINHAL

Quinta das Cerejeiras, Apartado 5,
Bombarral
T. (+351) 262 609 190
info@vinhos-sanguinhal.pt
www.vinhos-sanguinhal.pt

ROTA DE VINHOS DA PENÍNSULA DE SETÚBAL

Casa Mãe da Rota de Vinhos, Largo
de São João Baptista, Palmela
T. (+351) 212 334 398
info@rotavinhospsetubal.com
www.rotavinhospsetubal.com

SINGULARTRIPS

Av. Óscar Monteiro Torres,
20, 2.º E, Lisboa
T. (+351) 212 69 69 40/
964 30 63 10
singulartrips@gmail.com
www.singulartrips.com

TAYLOR'S PORT

Rua Cais de Santarém, 4-6-8, Lisboa
T. (+351) 218 863 105
sprovas.lx.taylor@taylor.pt
www.taylor.pt

VINI PORTUGAL LISBOA CARD PARTNER

Rua Mouzinho da Silveira, 5, Lisboa
T. 213 569 890
sala.ogival@viniportugal.pt
www.viniportugal.pt

WINE WITH A VIEW

Travessa do Fiuza, 39
– porta 3, Lisboa
T. (+351) 939 315 778
barbara@winewithaview.pt
winewithaview.pt

HANDICRAFTS

ELÉTRICO DE LISBOA

Lisbon tram original scale model
T. (+351) 914 980 251
electricodelisboa@hotmail.com

LISBOA SHOP

LISBOA CARD PARTNER

Rua do Arsenal, 7-15, Lisboa
T. (+351) 210 312 802
info@lismarketing.pt
www.visitlisboa.com

FASHION

OUTRA FACE DA LUA

Rua da Assunção, 22, Lisboa
T. (+351) 218 863 430
baixa@aoutrafacedalua.com
www.aoutrafacedalua.com

BOUTIQUE DOS RELÓGIOS

ARTAVENIDA

Av. da Liberdade, 194 C, Lisboa
T. (+351) 932 565 301
tempus@tempus.pt
www.boutiquedodosrelogios.pt

JEWELLERY SHOP

JOALHARIA FERREIRA MARQUES

Praça Dom Pedro IV, 7-9, Lisboa
T. (+351) 213 423 723
joferreiramarques@gmail.com

OPTICIANS

OLHAR DE PRATA

Av. Fontes Pereira de Melo, 21, Lisboa
T. (+351) 213 513 230
olhardeprata@gmail.com
www.olhardeprata.pt

PERFUMERY

PERFUMES E COMPANHIA

(LOJA ROSSIO)

Praça Dom Pedro IV, 45-50, Lisboa
T. (+351) 211 554 480
lojaonline@perfumesecompanhia.pt
www.perfumesecompanhia.pt



Festival de Teatro de Almada

From 4th to 18th of July; in various cultural facilities in Almada and Centro Cultural de Belém. Tickets: from 13 to 17.50 euros. More information at: festival.ctalmada.pt

Creators, national and international companies, new circus, theater and dance shows will mark the 40th edition of the Festival de Teatro de Almada. Taking place on nine different stages, the twenty scheduled shows will feature creations directed by various European and non-European directors, including Portuguese creations, focused on contemporary national dramaturgy. In addition to conversations with some of the creators present, the program also features a debate dedicated to the theme "Artificial Intelligence and artistic creation" and concerts of world music, every night on the Esplanada of D. António da Costa School.



Festival ao Largo

From 6th to 27th of July; at 9:30 pm; Teatro Nacional de São Carlos; Largo de São Carlos (metro: Baixa-Chiado | tram: 28 | train: Sintra line, Rossio station; Cascais line, Cais do Sodré, station). Free entry. More information at: festivalaolargo.pt

Festival ao Largo once again brings culture, performing arts and the spirit of sharing. The Companhia Nacional de Bailado is in charge of opening this festival with the performance Symphony of Sorrows and Estúdios Victor Córdon closes the festival with the performance of "Sad Case". During the month, the public will have the opportunity to attend a chamber concert by Ensemble Darcos, which brings its project of fusion between fado and traditional Afghan music to the Largo, and five other performances that celebrate various musical styles from the opera to classical music, with the Coro do Teatro Nacional de São Carlos e com a Orquestra Sinfónica Portuguesa.



Royal Blood

2nd July; at 8 pm; Sagres Campo Pequeno; Av. da República (metro: Campo Pequeno).
Tickets: from 25 to 39 euros. More information at: sagrescampopequeno.pt

Sagres Campo Pequeno will welcome Royal Blood, who is presenting its most recent album 'Typhoons', which reached the top of the charts in the United Kingdom soon after its release and had a great impact in several countries throughout Europe. The rock duo, composed of Mike Kerr and Ben Thatcher, returns to Lisboa one year after its last performance, with two million global sales and awards like the BRIT Award for Best British Group.



Rod Stewart

16th July; at 9 pm; Altice Arena; Parque das Nações (metro: Oriente | buses: 26B, 208, 210, 705, 708, 725, 728, 744, 759, 782 | train: Oriente). Tickets: from 45 to 155 euros. [More information at: arena.altice.pt](http://arena.altice.pt)

One of the British musicians most appreciated by the Portuguese and one of the best interpreters of his generation is back for a single concert in Lisboa. Rod Stewart goes on stage at Altice Arena bringing his biggest hits to revisit them with the audience. After having won various awards, among which a Grammy and the title of 'Sir Rod Stewart', for services rendered to music and for his work with different charities, the artist and the audience will relive together songs like 'Forever Young', 'Can't Stop Me Now', 'Do Ya Think I'm Sexy'.



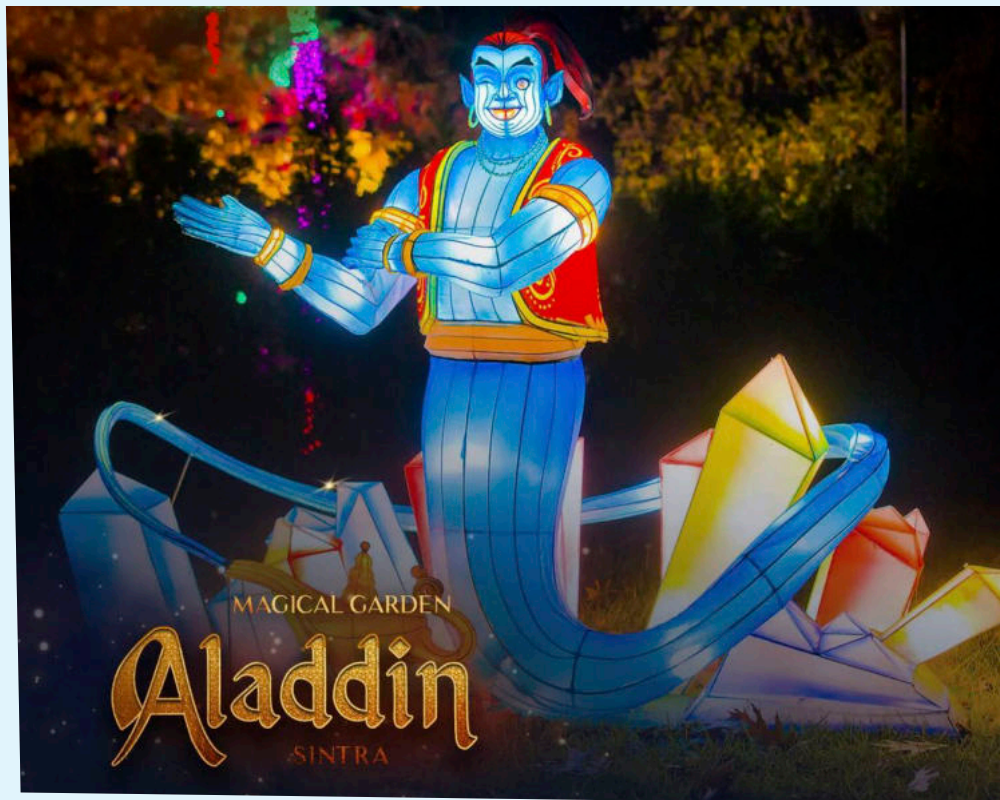
Ludovico Einaudi

Underwater

21st July; at 9:30 pm; Coliseu de Lisboa; Rua das Portas de Santo Antão, 96 (metro: Avenida).

Tickets: from 35 to 120 euros. More information at: coliseulisboa.com

Italian composer Ludovico Einaudi comes to Portugal for three special concerts. Besides presenting '*Underwater*', his most recent work, which was released in 2022 and marks his return to solo piano, Einaudi also invites the audience to listen to other performances of previous records in a personal choice for these shows. The musician and composer is going through a particularly important phase of his career, above all following the hit of the soundtracks of the films *Nomadland* and *The Father*.



Magical Garden Sintra

Aladdin

Until 10th September; from Wednesday to Sunday; at 9 pm; 10 pm; 10:30 pm; Jardim Novo do Palácio Nacional de Queluz; Largo Palácio de Queluz (train: Sintra line; station: Queluz | buses: 1513, 1717).

Tickets: 14 euros, general; 10 euros, families; 12 euros, students and seniors. More information at: portugalagenda.com/event/magical-garden-aladdin/

Jardim do Palácio de Queluz will be filled with lights and fireworks to welcome the fantastic world of Aladdin, who is bringing along princess Jasmine and the genie of the lamp. The heroes of this tale, as well as the remaining characters, land in Sintra with a series of multimedia installations with visual and sound environments. The audience dives into the story through holograms that bring life to the main characters, which voices are interpreted by Igor Lima, as Aladdin, Andreia Brasil, as Jasmine, and Quimbé, in the role of the Genie of the Lamp. The visitors also have the opportunity to go through a light tunnel, that suggests the illusion of a journey on the flying carpet, and to ask the Genie of the Lamp for wishes, through an augmented reality installation. Here it is also possible to see an impressive water fan which is more than 10 meters wide.



The Death of the Raven

Until 30th July; from Wednesday to Saturday; at 9 pm; Sundays; at 5 pm; Hospital Militar da Estrela;
Rua Santo António à Estrela, 29 A (buses: 720, 738, 773| trams: 25E, 28E). Tickets: 38 euros.
More information at: amortedocorvo.com

More than a play, 'A Morte de um Corvo' is an immersive experience of visual, scenic and technological impact, which proposes a journey to 1924. The plot revolves around an anticipated funeral, the death of a Portuguese poet. It all begins when Fernando Pessoa invites Mário de Sá Carneiro to the initiation ritual into the Raven Association, a society which seeks the secret of life beyond death. The Association is led by Edgar Allan Poe, who is extremely jealous of Pessoa's popularity. Ofélia's rejection, Mário's death and the deep disbelief in himself, among other events, will make the poet sink into a depressive cycle which will end in his death.



Eternal Forest: Forest Time

Until 27th August; from Tuesday to Sunday; from 10 am to 7 pm; Estufa Fria; Parque Eduardo VI; Alameda Edgar Cardoso (metro: Parque | buses: 1704, 1716, 1723, 1724, 1725, 1726, 1728, 1729,1730,1733,3704, 3709,3715). Tickets: from Monday to Saturday; 3.50 euros; Sundays; free until 14:00. More information at: eternalforest.earth

Evgenia Emets created the multidisciplinary artistic project Eternal Forest in 2018. By creating artistic works and experiences in the forest, this experience has the aim of communicating ideas about ecology and biodiversity, connecting people with nature and the forest ecosystem, through art and creativity. Walks, performances, audio guides, reflection sessions or ateliers are some of the experiences one can have in contact with nature in this project. The aim is to raise awareness of the protection of nature, bringing the message to different audiences, from the general public to a more specialized circle, such as scientists, biologists, landscape architects, plastic artists or others.



Kukas. Tribute to Geometry

Until 27th August; from Tuesday to Friday; from 10 am to 1 pm; from 2 pm to 6 pm; Saturdays and Sundays; from 10 am to 2 pm; from 3 pm to 6 pm; Museu Nacional De Arte Contemporânea; Rua Serpa Pinto, 4 (metro: Baixa-Chiado | buses: 60, 208, 758 | tram: 28). Tickets: 4,50 euros. More information at: www.museuartecontemporanea.gov.pt

The exhibition 'Kukas. Homenagem à Geometria' is inaugurated on the day that the author of the first renovation of the formal language of jewellery in Portugal turns 95. This showing presents recently created pieces, diverse objects and materials, ranging from necklaces, pendants and brooches, to earrings, cufflinks and bracelets, made of gold, silver, baroque pearls, agate, shells, rock crystal, lapis-lazuli and mother-of-pearl, remodelling the traditions of jewellery with features of contemporaneity. In 1963 Kukas had her first exhibition in Lisboa. Sixty years later, the artist once again presents jewellery as a hybrid art that combines drawing, sculpture, painting, architecture and design.



Plastic: Remaking Our World

Until 28th August; from Wednesday to Monday; from noon to 6 pm; MAAT – Museu de Arte, Arquitetura e Tecnologia; Av. Brasília (train: Cascais line, Belém station | buses: 728, 714, 727, 729, 751 | tram: 15).

Tickets: general, 7 euros. More information at: maat.pt

In 'Plástico: Reconstruir o Nosso Mundo' the visitors will find three sections about the origin, the evolution and the possible future of this material. The exhibition does not intend to be anti-plastic, but throughout the sections it reveals the human relationship with these objects and casings, from the way they are made, to how they are used and discarded. The exhibition begins with a videographic installation about the geological condition that makes it possible to manufacture plastic. The second section goes through the history of plastic, from its natural origin to the experimentation with synthetic materials and the third takes stock of the present efforts to rethink plastic, develop alternatives, reduce its production and consumption, as well as encourage its reuse.

Discover
for yourself



Fado: Lisboa's intangible treasure

'O **fado** nasceu um dia...' ('Fado was born one day...') is the beginning of one of the iconic songs of Lisboa's most characteristic musical rhythm. The word itself is an evolution from the Latin word *fa-tum*, which means destiny or prophecy. However, the Fado that characterizes the artistic genre featuring a fado singer accompanied by one or several musicians on the Portuguese guitar cannot be defined, it can only be felt.

There still is no exact year for the beginning of Fado nor concrete data on its true origin. It is known that it developed among the different cultures that existed in Lisboa, which makes it an urban song. One can say that the melody, which would become Lisboa's musical heritage, was born in popular environments in the 19th century, having been spontaneously but regularly present in the leisure moments of the inhabitants of Lisboa.





Throughout time, the social and cultural context, the typical neighbourhoods and the bohemian character of Lisboa nurtured the cult of these melodies. From the first decades of the 20th century onwards, we can witness a gradual popular dissemination and acclamation of Fado, which results in the tradition of attending shows at particular spaces.

It was among narrow streets and picturesque alleys, in the historical neighbourhoods, such as Alfama, that the fado houses emerged in the second decade of the 20th century. However, it was in the 1930s that they became an inescapable feature of the city's cultural landscape. The musical style begins to distance itself from improvisation and to force interpreters, authors and musicians to become experts.

In the 1950s, Fado knows the unavoidable figure of Amália Rodrigues, who internationalizes it and establishes it as an art form. The rhythm which characterizes Lisboa thus becomes an emblematic artistic expression of Portugal.

Amália Rodrigues was followed by other iconic names. One example is Carlos do Carmo, who was eternalized by 'Lisboa, menina e moça', which be-

came the official song of the city of Lisboa immediately after his death, in 2021.

Today, Fado is considered Intangible Heritage of Humanity and the houses devoted to it are rich in stories of those who witnessed its first steps. These are spaces like 'A Severa' or 'O Faia'. These elements, that are inseparable from Portuguese culture and have been active for decades, are places where people breathe and live the spirit of this traditional style. These houses preserve the memory and authenticity of this old song, that has Lisboa in its lyrics and stirs emotions within those who listen to it.

With welcoming, dimly lit interiors and an intimate ambience, the atmosphere is charged with a nostalgic aura, while the sound of the Portuguese guitars and the emotional voices fill the air. In these true artistic refuges, it is possible to witness the skill of the fado singers, who, with their voices full of passion, bring life to the lyrics that sometimes speak of love and other times of suffering.

Much more than a simple song or a sung poem, the lyrics convey a sense of *saudade*, an untranslatable word which sums up a unique feeling of nostalgia, melancholy and desire. A familiar feeling to those who know Lisboa and its Fado. Discover for yourself.



Jorge Barradas in the Gardens of Europe

Until 28th August; from Tuesday to Friday; from 10 am to 1 pm; from 2 pm to 6 pm; Saturdays and Sundays; from 10 am to 2 pm; from 3 pm to 6 pm; Museu Nacional de Arte Contemporânea; Rua Serpa Pinto, 4 (metro: Baixa-Chiado | buses: 60, 208, 758 | tram: 28). Tickets: 4,50 euros.
More information at: museuartecontemporanea.gov.pt

The exhibition 'Jorge Barradas no Jardim da Europa' represents an artistic journey through about 70 works of the Portuguese modernist. Organized in four sections, this showing presents a series of paintings in different formats and techniques, which transport the visitors to the bohemian life in the Lisbon of the 1920s and 1930s, between cafés and theatres of the capital. This is the biggest exhibition ever made about the artist, gathering works from his 60-year-long career from Museu Nacional de Arte Contemporânea, Instituto de História da Arte of FCSH/NOVA and Fundação Millennium bcp.



The Immersive Dimension Jorge Marçal da Silva

Until 31st August; from Monday to Friday; from 10 am to 6 pm; Arquivo Fotográfico; Rua da Palma, 246 (metro: Martim Moniz | buses: 208, 708, 734 | trams: 12E, 28E).
Free entry. More information at: arquivomunicipal.lisboa.pt

Jorge Marçal da Silva (1878-1929) was a surgeon and amateur photographer. He took his first picture on 12th August 1906, a family portrait on a Sunday afternoon, in the garden of his house in Lisboa. This exhibition gathers about four thousand of this author's pictures on a gelatine and silver support on glass, highlighting his photographic production in terms of stereoscopy. It reveals the 'photographic trends' of the time, among family and friends, intangible heritage, constructions and nature, strolls and travels. Today, these pictures can be seen through historical and modern devices and it is also possible to observe prints of the time, record books of his photographs and other personal objects.



Miniature City Model by fireman Luís Pereira de Carvalho

Until 3rd September; from Tuesday to Sunday; from 10 am to 6 pm; Museu de Lisboa; Palácio Pimenta; Campo Grande, 245 (metro: Campo Grande | buses: 701, 717, 731, 735, 736, 738, 747, 750, 755, 767, 778, 783, 796, 798). Tickets: 3 euros. More information at: museudelisboa.pt

Over 26 years, Luís Caetano Pereira de Carvalho built the centre piece of the exhibition 'Cidade-Miniatura', which the museum team affectionately calls 'the fireman's model'. The meticulous work made in polychrome wood is 2,21 meters long and 0,89 meters wide, in a 1:1000 scale. This model represents Lisboa in the first decades of the 20th century. It represents all the carefully studied buildings which were created with the characteristics and colours of the time, revealing the evolution of the city and the changes time has brought about since then.

On the Path of Oriental Fans

Until 10th September; from Tuesday to Sunday; from 10 am to 6 pm; Museu do Oriente, Av. Brasília, Doca de Alcântara (buses: 712, 713, 714, 727, 742, 751, 756, 728, 732, 760, 720, 738 | trams: 15E, 18E | train: Cascais, Alcântara-Mar station). Tickets: 6 euros. More information at: foriente.pt

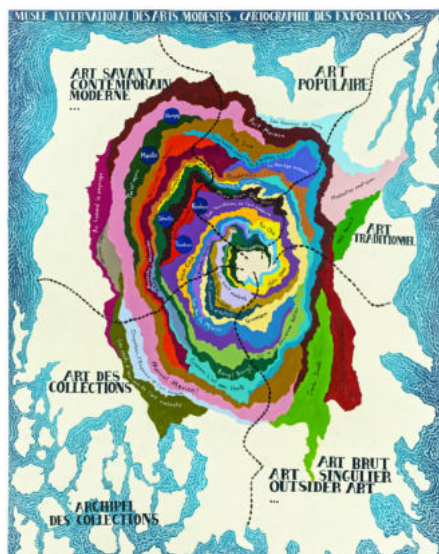
Since its introduction in the west, the fan has become an object of fascination in which powerful social and cultural messages converge: luxury, exoticism, status and power. 'Na Senda dos Leques Orientais' presents 180 pieces that trace the history, characteristics and uses of the Chinese fan in Europe from the 16th century onwards. The exhibition features rare specimens, various objects of painting, sculpture, photography and porcelain, as well as graphic documents that illustrate their usefulness. This showing recreates the history of the fan, from its origin and manufacturing processes to its functions in different contexts.



In Brute: Touching Relationships

Until 10th September; from Tuesday to Sunday; from 10 am to 7 pm; last entry at 6:30 pm; Museu CBB; Praça do Império (buses: 28, 714,727,729,751 | tram:15 | train: Cascais line; station: Belém). Tickets: 5 euros, general. More information at: ccb.pt

The exhibition 'Em Bruto: Relações Comoventes' is a large installation which adapts itself to the place where it is presented. From Fundación Cerezas Antonino y Cinia de León, in Spain, to CCB, the artistic structure starts from beams, trestles and joists that summon notions of spatial reconstruction and reconfiguration. The set created is therefore as much physical as a reflection on architecture, the city, space and modernity. For this reason, the exhibition includes a reading room, where it is possible to consult books mentioned in the installation, and an introductory room to the new piece, composed of a series of elements that the author, Fernanda Fragateiro, has called Materials Lab.



Archipelago Hervé Di Rosa

Until 11th September; from Wednesday to Monday; from noon to 6 pm; MAAT – Museu de Arte, Arquitetura e Tecnologia; Av. Brasília (train: Cascais line, Belém station | buses: 728, 714, 727, 729, 751 | tram: 15). Tickets: general, 7 euros. More information at: maat.pt

Archipelago Hervé Di Rosa is an invitation to explore and discover new worlds. Starting from a parallelism with the travels narrated by Júlio Verne, this exhibition proposes a visit to the MIAM – Musée International des Arts Modestes, founded by Hervé Di Rosa and Bernard Belluc, through a vast selection of works gathered over more than 40 years. From comics to commercial art, not forgetting traditional or naïve art, art brut, psychedelia and the cinema, there is much to see.



Urban [R]evolution

Until 3rd December; every day; from 10:30 am to 7:30 pm; Cordoaria Nacional; Av. da Índia (buses: 728, 3701).
 Tickets: from Monday to Friday, 13 euros, general; 10 euros, students and seniors; Saturdays, Sundays and holidays;
 15 euros, general; 12 euros, students and seniors. More information at: urbanrevolution.pt

Urban [R]evolution is the largest national urban art exhibition. With a big dimension, diversity and experience component, it brings together 18 Portuguese and foreign artists under the curatorship of Pauline Foessel and Pedro Alonzo. Original installations tell the story of the urban art development, from its initial phase, in the form of graffiti and paintings in the metro, until the renowned street art. The different exhibition cores had the direct intervention of each artist during the assembly process. Various immersive areas were created exclusively for this showing, transforming the Cordoaria into a space that reflects the different styles and techniques which have evolved since the beginning of urban art until today.



Dinosaurs The Return of the Giants

Until September; from Tuesday to Friday; from 10 am to 6 pm; last entry at 5:30 pm; weekends; from 10 am to 7 pm; last entry at 6:30 pm; Pavilhão do Conhecimento; Centro Ciência Viva; Largo José Mariano Gago (metro: Oriente | buses: 400, 705, 708, 725, 728, 744, 750, 759, 782, 794). Tickets: 11 euros, general; children up to 11 years of age and seniors, 8 euros. More information at: pavconhecimento.pt

Which dinosaur species lived in Portugal millions of years ago? Grab brushes and shovels and enter the Palaeontology world at the Pavilhão do Conhecimento (Pavilion of Knowledge). In an intrepid journey to the Mesozoic Era, see up close a life-size representation of the most charismatic dinosaurs, such as the Tyrannosaurus rex and the Triceratops. Through the different stations, which range from the campaign tent to the laboratory, the visitors can participate in an excavation, discover the sounds of the Cretaceous, make a scientific illustration of a dinosaur and reconstruct its skeleton.

Vita Prima. Saint António in Portugal

Until 31st December; from Tuesday to Sunday; from 10 am to 6 pm; Museu de Lisboa; Palácio Pimenta; Campo Grande, 245 (metro: Campo Grande | buses: 701, 717, 731, 735, 736, 738, 747, 750, 755, 767, 778, 783, 796, 798). Tickets: 3 euros. More information at: museudelisboa.pt

Vita Prima. Santo António em Portugal is intended to be a journey through the life of the young Fernando de Bulhões. Santo António had two lives with a turning point in joining the Order of Friars Minor. If, on the one hand, in Italy and France, he is better known as a preacher and teacher of this Order, on the other hand, in Portugal, oral tradition has tried to preserve the memory of this figure's childhood and youth. This exhibition is a proposal to understand how the saint and the values associated with him (sacred and profane) became pillars of Lisboa's identity.



Japan: Festivities and Traditions

Until 31st December; from Tuesday to Sunday; from 10 am to 6 pm; Museu do Oriente; Av. Brasília, Doca de Alcântara (buses: 712, 713, 714, 727, 742, 751, 756, 728, 732, 760, 720, 738 | trams: 15E, 18E | train: Cascais, Alcântara-Mar station). Tickets: 6 euros. More information at: foriente.pt

The celebration of the New Year, the Boys and Girls Parties, the purification, protection and funerary rites, as well as the fertility cults and the end of year ceremonies are some of the festivities and rituals of Japan, a country full of religious traditions mostly originating in Shintoism, to which practices from Buddhism and Christianity were added. The exhibition 'Japão: Festas e Tradições' proposes an immersive journey to these festivities. Among set designs, recreations of altars and cult spaces, objects of devotion, statuettes and pictures, there are more than 1500 pieces to see.

FOLLOW ME
LISBOA

PROPRIETOR

TURISMO DE LISBOA
T. +351 210 312 700
Fax: +351 210 312 899
www.visitlisboa.com
atl@visitlisboa.com
NIF: 501 880 160

DIRECTOR

PAULA OLIVEIRA

N.º 323 | JULY 2023

ADVERTISING

LISMARKETING
info@lismarketing.pt
T. (+351) 210 312 800

EDITOR | EDITORIAL DEPT.

 THE HOUSE
OF PR

Edifício Lisboa Oriente
Av. Infante D. Henrique, 333 H, 49
1800-282 Lisboa
T. (+351) 218 508 110
Fax: (+351) 218 530 426
lpmcom@lpmcom.pt

SECRETARY

Ana Paula Pais
T. (+351) 218 508 110
followmelisboa@lpmcom.pt

Follow Me Lisboa adopts the format exclusively by promotional vehicle of Tourism in the city of Lisboa.

The information given on shows and equipment is provided by the organisers of the events. The publisher cannot be held responsible for any cancellations or changes that may be made in the programs and events, or for possible alterations in dates, times and content.



Boy at Work

Cosima von Bonin

Until 23rd July; from Wednesday to Sunday; from 3 pm to 7 pm; Lumiar Cité;
Rua Tomás del Negro, 8A (metro: Lumiar | buses: 798,717). Free entry.
More information at: maumaus.org

Boy at Work is the first solo exhibition by Cosima von Bonin in Portugal. With remarkable works at Tate Britain and the Museum of Modern Art, in New York, the German plastic artist uses installations, conceptual sculptures, fabrics, wood, music, films and objects she found. Cosima von Bonin uses manufacture and popular culture to question social relations, identity and appropriation.

CHAVES DE OURO DE PORTUGAL

Les Clefs d'Or Portugal - The Golden Keys
Portuguese Concierge Association



Professionals at
your Concierge Desk
to help and give you
the best service

www.chavesdeouro.org



Open every day from 10^{am} to 7^{pm}

Royal Treasury Museum. Crown Jewels



MUSEU DO TESOURO REAL

PALÁCIO NACIONAL DA AJUDA

PATRIMÓNIO CULTURAL
Direção-Geral do Património Cultural



Palácio Nacional da Ajuda - Lisboa